



Z-Bar



Parts ID Manual

Model Number: SB-Z-0100/A

Revision: A

© Copyright 2023 by DEMTECH Services, Inc.

All Rights Reserved

Scope of Manual:

This manual contains procedures for safety, general unpacking, set-up, and operation of your DEMTECH Services, Inc. Z-Bar.

The text of this publication, or any part thereof, may not be reproduced or transmitted in any form or by any means, electronic or mechanical, including photocopying, recording, storage in an information retrieval system, or otherwise, without prior written permission of DEMTECH Services, Inc.

Notice

Patents have been granted and/or patent applications are pending or are in the process of preparation on all DEMTECH Services, Inc. developments.

The material in the manual is for informational purposes only and is subject to change without notice.

DEMTECH Services, Inc. assumes no responsibility for any errors that may appear in this manual.

Manual Number: **SB-Z-BAR PARTS ID MANUAL, Revision: A**

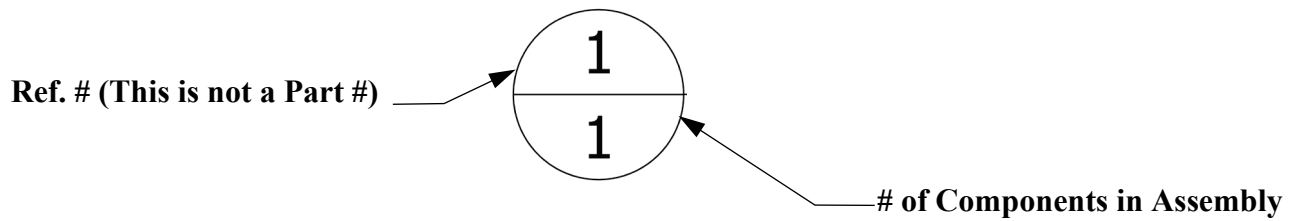
DEMTECH Services, Inc.
6414 Capitol Avenue Diamond Springs, CA 95619 U.S.A.
Telephone: (530) 621-3200
Toll Free: (888) 324-9353
Fax: (530) 621-0150
Web Site: www.demtech.com

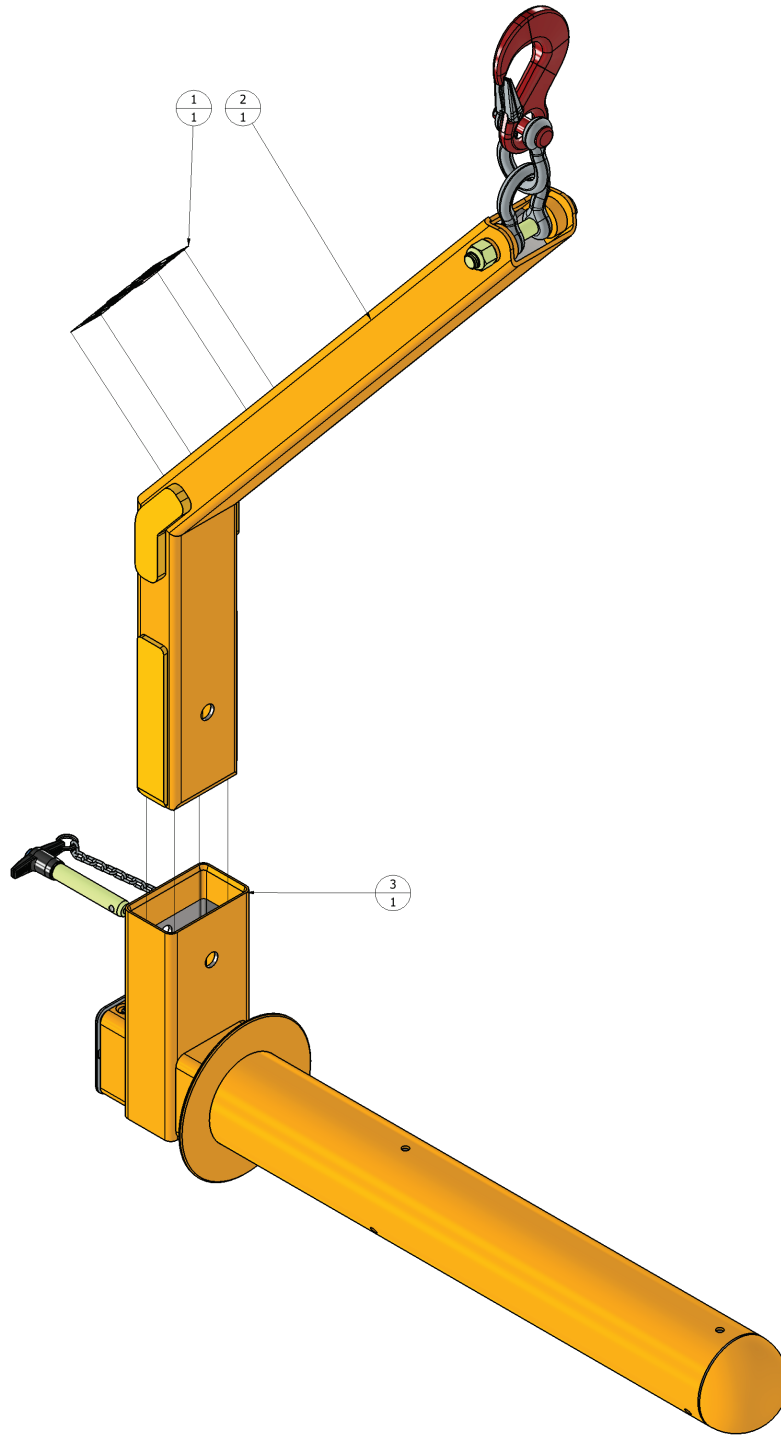
TABLE OF CONTENTS

| | | |
|----------|--|----------|
| 1 | ORDER INSTRUCTIONS | 1 |
| 1.1 | SB-Z-0100/A – Assembly, Z-Bar (Parts ID)..... | Page 2 |
| 1.2 | SB-Z-0100/A – Assembly, Z-Bar (Parts List)..... | Page 3 |
| 1.3 | SB-Z-0101/A – Assembly, Arm, Z-Bar (Parts ID)..... | Page 4 |
| 1.4 | SB-Z-0101/A – Assembly, Arm, Z-Bar (Parts List)..... | Page 5 |
| 1.5 | SB-Z-0102/A – Assembly, Missile, Z-Bar (Parts ID)..... | Page 6 |
| 1.6 | SB-Z-0102/A – Assembly, Missile, Z-Bar (Parts List)..... | Page 7 |

1 Order Instructions

Refer to the diagrams and related parts lists on the following pages to identify replacement parts for the Z-Bar. To locate a part, find it visually on the exploded assembly diagram and note its Reference Number. Next refer to the assemblies parts list to identify the corresponding Part Number using the Reference Number. When ordering parts, be sure to specify the Part Number not the Reference Number. '*NS-Hardware*' refers to non-stock items, these parts are still available for order, please provide the part description to order NS-Hardware items.

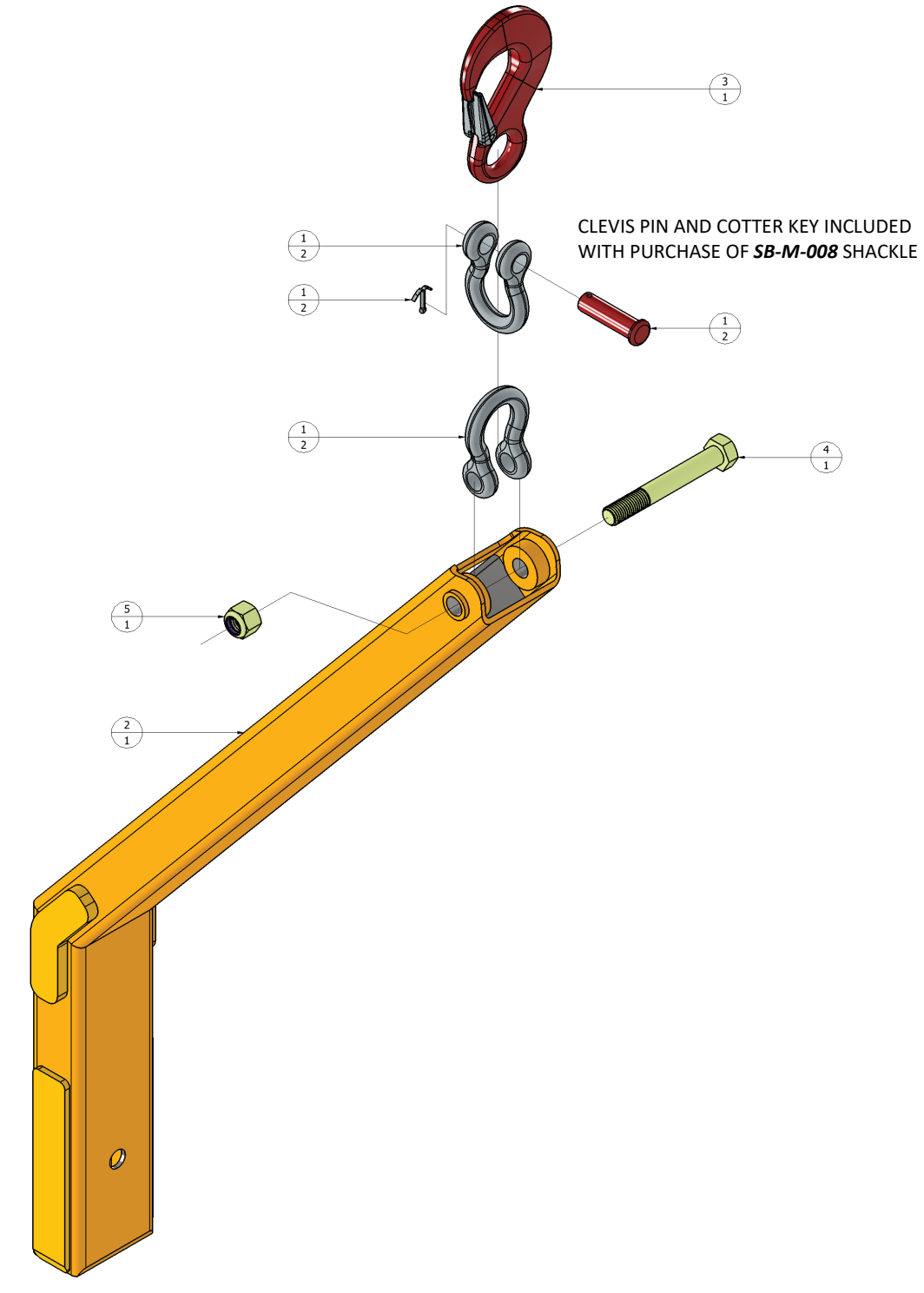




1.1 SB-Z-0100/A – Assembly, Z-Bar (Parts ID)

| Parts List | | | |
|------------|---------------|--------------------------|-----|
| REF. NO | PART NO. | DESCRIPTION | QTY |
| 1 | LABEL-DEMTECH | LABEL, DEMTECH, LARGE | 1 |
| 2 | SB-Z-0101/A | ASSEMBLY, ARM, Z-BAR | 1 |
| 3 | SB-Z-0102/A | ASSEMBLY, MISSILE, Z-BAR | 1 |

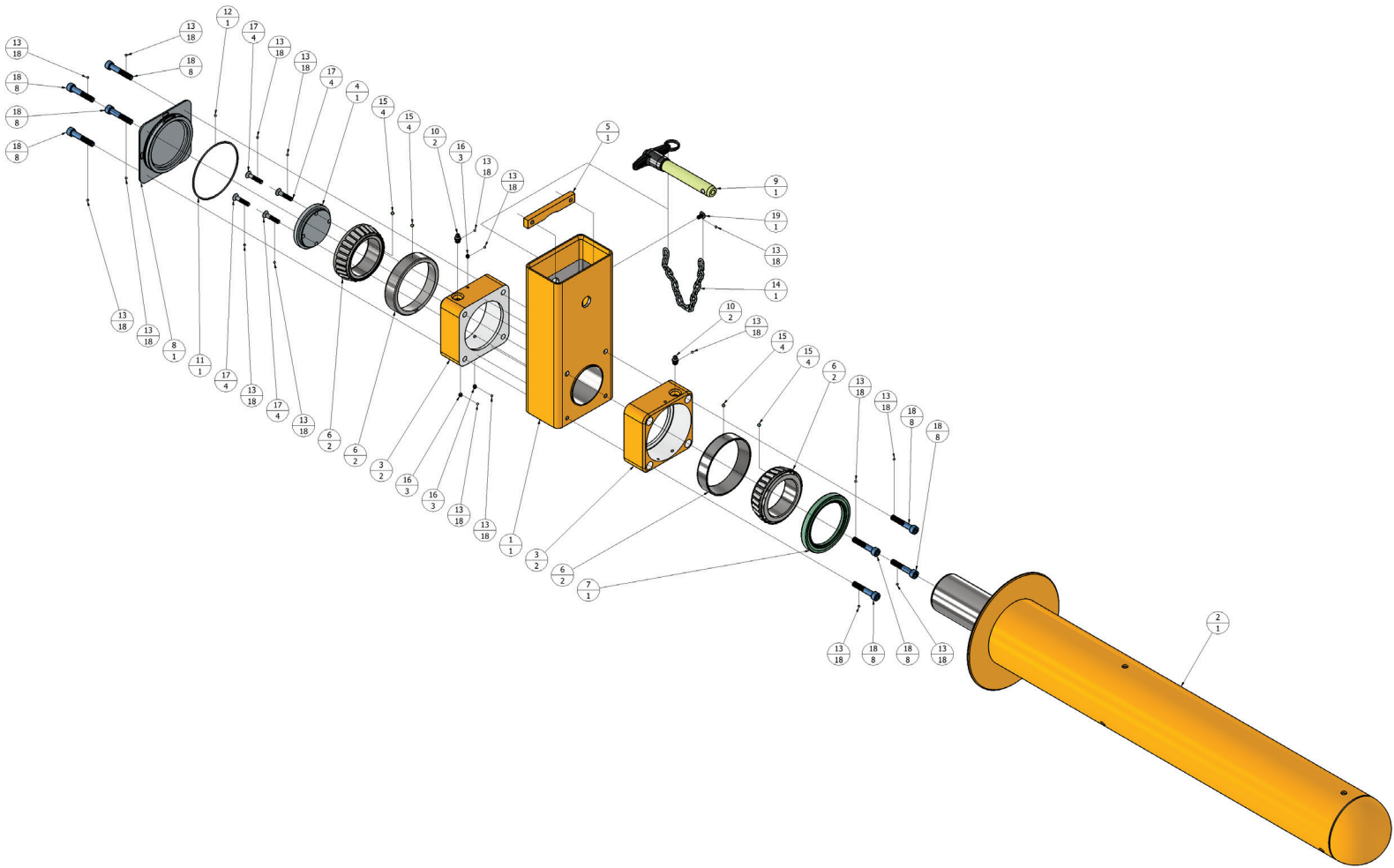
1.2 SB-Z-0100/A – Assembly, Z-Bar (Parts List)



1.3 SB-Z-0101/A – Assembly, Arm, Z-Bar (Parts ID)

| Parts List | | | |
|------------|-------------|--|-----|
| REF. NO | PART NO. | DESCRIPTION | QTY |
| 1 | SB-M-008 | SHACKLE, ROUND PIN ANCHOR, 5/8", 3-1/4 TON WORKING LOAD LIMIT (INCLUDES CLEVIS PIN AND COTTER KEY) | 2 |
| 2 | SB-Z-001 | ARM, UPPER WELDMENT, Z-BAR | 1 |
| 3 | SB-Z-008 | EYE HOOK, FORGED ALLOY, ID CODE H, 3 TON WORKING LOAD LIMIT, W/ LATCH | 1 |
| 4 | SB-Z-012 | BOLT, 3/4"-10 X 5-1/2" LONG, HEX HEAD, GRADE 8, ZINC PLATED ALLOY STEEL | 1 |
| 5 | NS-HARDWARE | NUT, 3/4"-10, HEX NYLON-INSERT LOCKING, GRADE 8, ZINC PLATED ALLOY STEEL | 1 |

1.4 SB-Z-0101/A – Assembly, Arm, Z-Bar (Parts List)



1.5 SB-Z-0102/A – Assembly, Missile, Z-Bar (Parts ID)

Parts List

| REF. NO | PART NO. | DESCRIPTION | QTY |
|---------|-------------|--|-----|
| 1 | SB-Z-002 | ARM, LOWER WELDMENT, Z-BAR | 1 |
| 2 | SB-Z-003 | MISSILE, WELDMENT, Z-BAR | 1 |
| 3 | SB-Z-004 | HOUSING, TAPERED ROLLER BEARING | 2 |
| 4 | SB-Z-006 | WASHER, MISSILE END CLAMP | 1 |
| 5 | SB-Z-007 | STOP, UPPER ARM INSERT | 1 |
| 6 | SB-Z-010 | BEARING, TAPERED ROLLER, SINGLE-ROW, 65mm ID X 100mm OD X 27mm WIDE, STEEL | 2 |
| 7 | SB-Z-011 | SEAL, SHAFT, 75mm ID X 100mm OD X 10mm WIDE, NITRILE RUBBER | 1 |
| 8 | SB-Z-013 | CAP, BEARING HOUSING GUARD | 1 |
| 9 | SB-Z-014 | HANDLE, T, PUSH BUTTON QUICK-RELEASE, 3/4" DIA X 3-1/2" USABLE LENGTH, 4130 STEEL SHANK | 1 |
| 10 | NS-HARDWARE | FITTING, GREASE, STRAIGHT, M8 X 1.0 MALE X 15mm OAL X 9mm HEX, ZINC PLATED STEEL | 2 |
| 11 | NS-HARDWARE | O-RING, 97mm ID X 2mm CS, 70 SHORE A DUROMETER, BLACK BUNA-N | 1 |
| 12 | NS-HARDWARE | GREASE, O-RING, SYNTHETIC SILICONE, OR EQUIVALENT | 1 |
| 13 | NS-HARDWARE | ADHESIVE, THREADLOCKING LIQUID, RED | 18 |
| 14 | NS-HARDWARE | CHAIN, LIGHT DUTY, SIZE 4 X 16 LINKS, ZINC PLATED STEEL | 1 |
| 15 | NS-HARDWARE | ADHESIVE, BEARING RETAINING COMPOUND, GREEN | 4 |
| 16 | NS-HARDWARE | SCREW, SET, M5 X 0.8 X 6mm LONG, CONE-POINT ALLEN, 18-8 STAINLESS STEEL | 3 |
| 17 | NS-HARDWARE | SCREW, M6 X 1.0mm X 30mm LONG, FLAT HEAD SOCKET CAP, CLASS 10.9, ZINC PLATED ALLOY STEEL | 4 |
| 18 | NS-HARDWARE | SCREW, M8 X 1.25mm X 45mm LONG, SOCKET HEAD CAP, CLASS 12.9, BLUE DYED ZINC PLATED ALLOY STEEL | 8 |
| 19 | NS-HARDWARE | SCREW, M5 X 0.8 X 10mm LONG, TRUSS HEAD PHILLIPS, 316 STAINLESS STEEL | 1 |

1.6 SB-Z-0102/A – Assembly, Missile, Z-Bar (Parts List)