



Pro-Tacker



Parts ID Manual

Model Number: [PRT-75000 \(110V\)](#)
[PRT-75014 \(220V\)](#)

Revision: B

© Copyright 2023 by DEMTECH Services, Inc.

All Rights Reserved

Scope of Manual:

This manual contains procedures for safety, general unpacking, set-up, and operation of your DEMTECH Services, Inc. Pro-Tacker.

The text of this publication, or any part thereof, may not be reproduced or transmitted in any form or by any means, electronic or mechanical, including photocopying, recording, storage in an information retrieval system, or otherwise, without prior written permission of DEMTECH Services, Inc.

Notice

Patents have been granted and/or patent applications are pending or are in the process of preparation on all DEMTECH Services, Inc. developments.

The material in the manual is for informational purposes only and is subject to change without notice.

DEMTECH Services, Inc. assumes no responsibility for any errors that may appear in this manual.

Manual Number: **PRO-TACKER (PRT-75000) PARTS ID MANUAL, Revision: B**

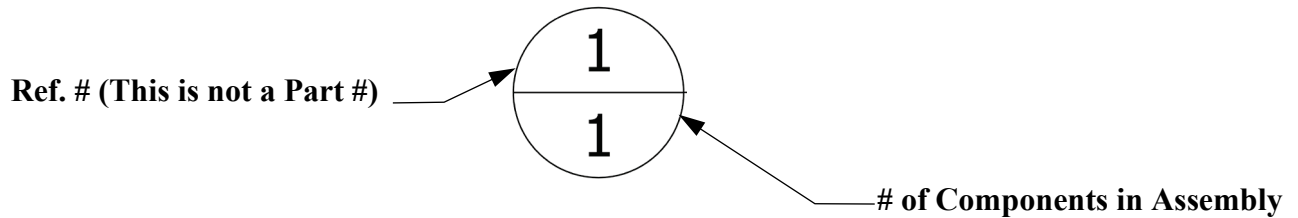
DEMTECH Services, Inc.
6414 Capitol Avenue Diamond Springs, CA 95619 U.S.A.
Telephone: (530) 621-3200
Toll Free: (888) 324-9353
Fax: (530) 621-0150
Web Site: www.demtech.com

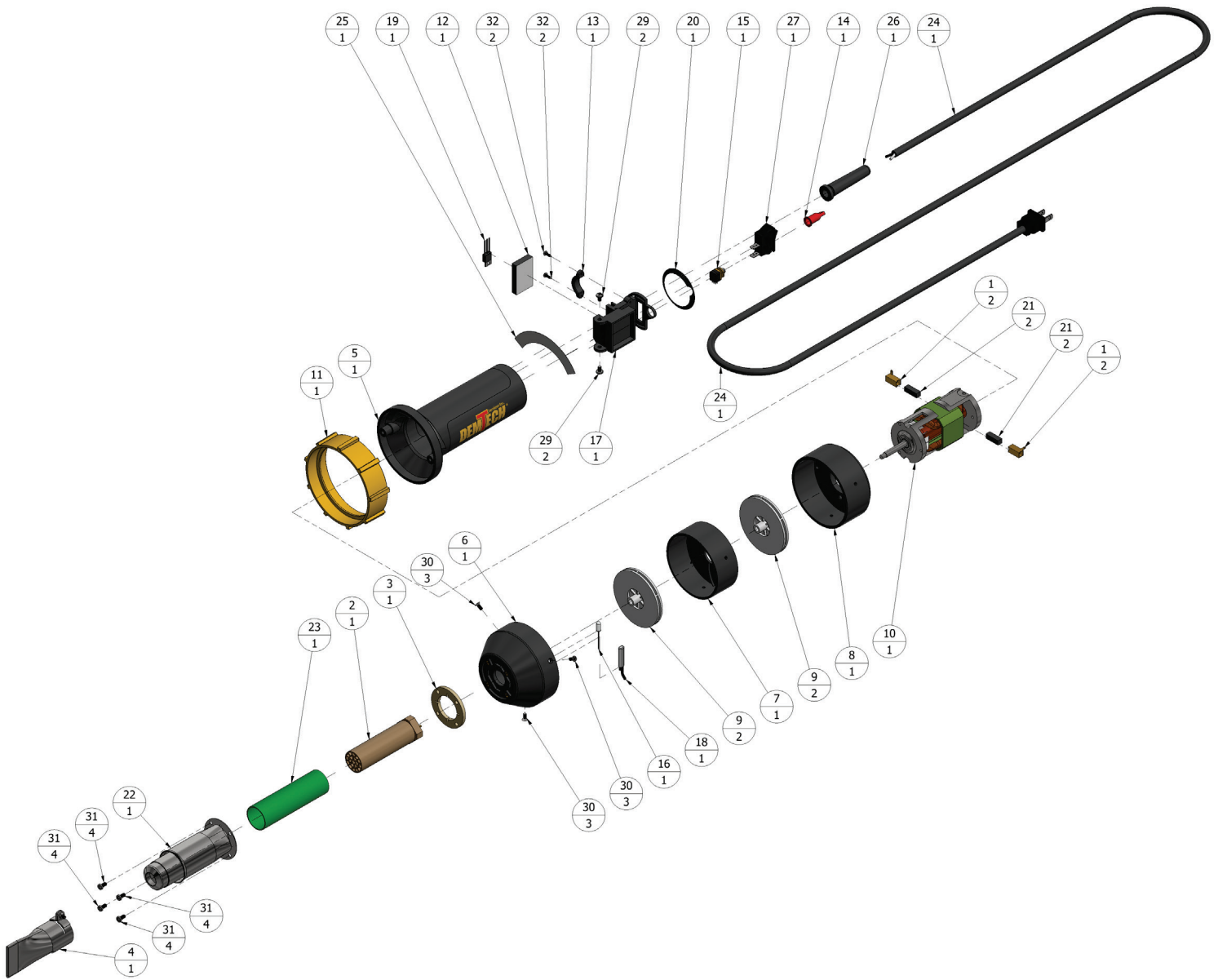
TABLE OF CONTENTS

1	ORDER INSTRUCTIONS.....	PAGE 1
1.1	PRT-75000 – ASSY, PRO-TACKER, 110V, 1550W, W/ 40mm NOZZLE (Parts ID).....	Page 2
1.2	PRT-75000 – ASSY, PRO-TACKER, 110V, 1550W, W/ 40mm NOZZLE (Parts List).....	Page 3
1.3	PRT-75014 - ASSY, PRO-TACKER, 220V, 1550W, W/ 40mm NOZZLE (Parts ID).....	Page 4
1.4	PRT-75014 - ASSY, PRO-TACKER, 220V, 1550W, W/ 40mm NOZZLE (Parts List).....	Page 5

1 Order Instructions

Refer to the diagrams and related parts lists on the following pages to identify replacement parts for the Pro-Tacker Hot Air Welder. To locate a part, find it visually on the exploded assembly diagram and note its Reference Number. Next refer to the assemblies parts list to identify the corresponding Part Number using the Reference Number. When ordering parts, be sure to specify the Part Number not the Reference Number. *'NS-Hardware'* refers to non-stock items, these parts are still available for order, please provide the part description to order NS-Hardware items.

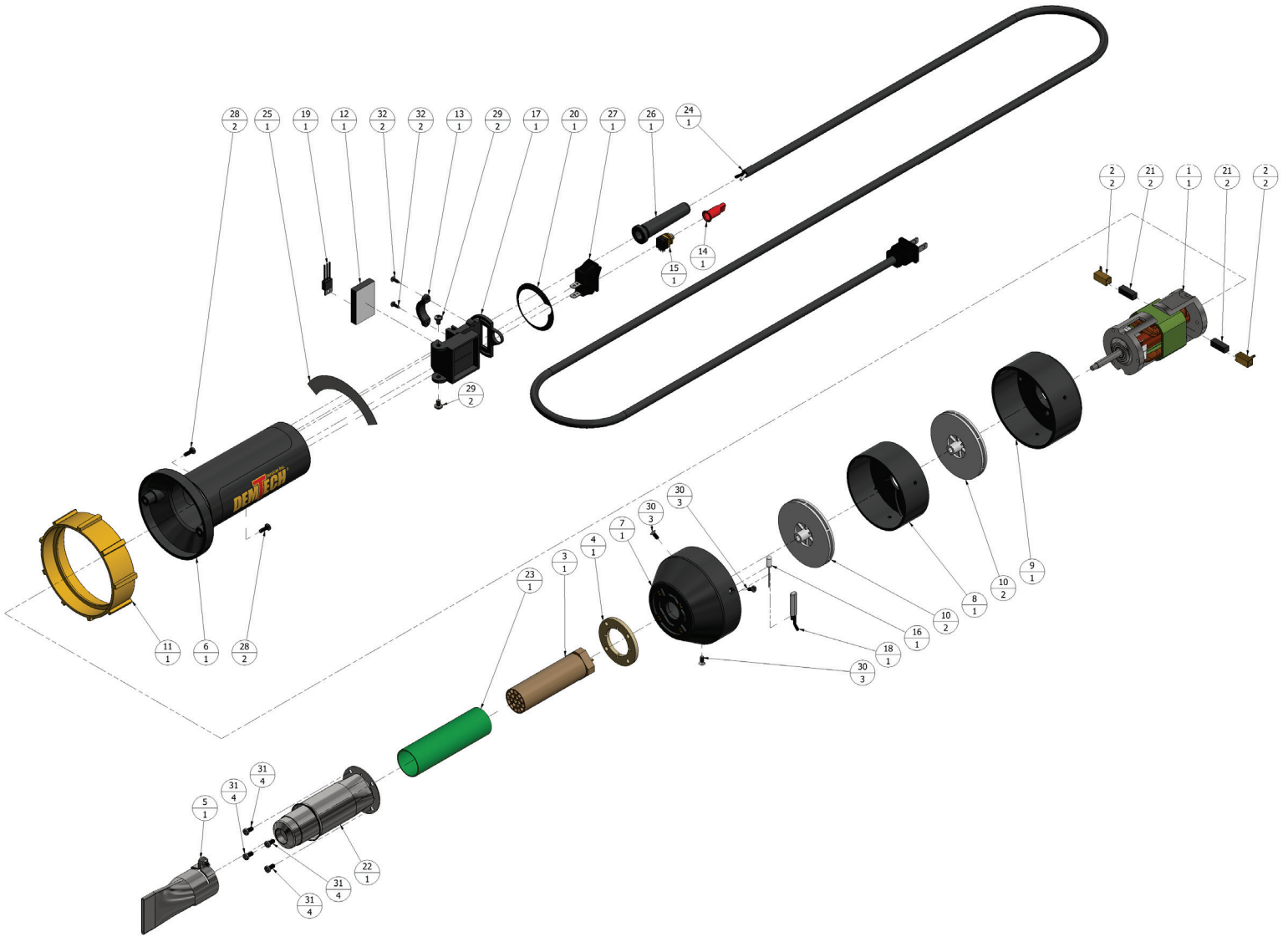




1.1 PRT-75000 – ASSY, PRO-TACKER, 110V, 1550W, W/ 40mm NOZZLE (Parts ID)

PARTS LIST			
REF. NO	PART NO	DESCRIPTION	QTY
1	L-100.279	BRUSH HOLDER, 110V & 220V PRO-TACKER	2
2	L-100.703	HEAT ELEMENT, 110V, 1550W, PRO-TACKER	1
3	L-103.224	RING, FIBER	1
4	L-107.132	NOZZLE, 40mm, FLAT	1
5	PRT-75020	HOUSING, OVERMOLD	1
6	PRT-75022	CONNECTING HEAD, PRO-TACKER, 120V/220V	1
7	PRT-75024	HOUSING, FAN, LOWER, PRO-TACKER	1
8	PRT-75026	FAN HOUSING, MID, PRO-TACKER	1
9	PRT-75028	FAN, UPPER & LOWER, PRO-TACKER	2
10	PRT-75030	MOTOR, 110V, PRO-TACKER	1
11	PRT-75032	RUBBER STAND, PRO-TACKER	1
12	PRT-75034	CIRCUIT BOARD, PRO-TACKER (Works w/ 110V & 220V Units)	1
13	PRT-75036	CORD RESTRAINT, PRO-TACKER	1
14	PRT-75038	KNOB, POTENTIOMETER, 110V, PRO-TACKER	1
15	PRT-75040	POTENTIOMETER, (Works w/ 110V & 220V Units)	1
16	PRT-75042	PHOTO EYE, PRO-TACKER	1
17	PRT-75044	MOUNT, CONTROLLER, 110V, PRO-TACKER	1
18	PRT-75046	TEMPERATURE LIMIT SWITCH, 110V, PRO-TACKER	1
19	PRT-75048	TRIAC, PRO-TACKER, (Works w/ 110V & 220V Units)	1
20	PRT-75050	AIR FILTER, 110V, PRO-TACKER	1
21	PRT-75052	CARBON BRUSH, PRO-TACKER 110V & 220V	2
22	PRT-75054	SLEEVE, HEAT, SMALL	1
23	PRT-75056	TUBE, MICA, INSULATION, SMALL HEATER	1
24	PRT-75058	POWER CORD, 110V, 2 BLADE, 5' LONG	1
25	PRT-75060	LABEL, PRO-TACKER, 120VAC, 1600W	1
26	PRT-75080	CORD RESTRAINT, REAR, PRO-TACKER	1
27	600-06	SWITCH, PRE-HEAT / PLASTIC HEAT	1
28	NS-HARDWARE	SCREW, PAN HEAD PHILLIPS, M3.5 X 0.6mm X 10mm	2
29	NS-HARDWARE	SCREW, M4 X 0.7 X 6mm LONG, PAN HEAD PHILLIPS, 18-8 STAINLESS STEEL	2
30	NS-HARDWARE	SCREW, FLAT HEAD, M3.5 X 0.6mm X 8mm, 18-8 STAINLESS	3
31	NS-HARDWARE	SCREW, M4 X 0.7 X 8mm LONG, PAN HEAD PHILLIPS, 18-8 STAINLESS STEEL	4
32	NS-HARDWARE	SCREW, SHEET METAL, M2.9 X 9.5mm, 18-8 STAINLESS	2

***1.2 PRT-75000 – ASSY, PRO-TACKER, 110V, 1550W, W 40mm
NOZZLE (Parts List)***



1.3 PRT-75014 – ASSY, PRO-TACKER, 220V, 1550W, W/ 40mm NOZZLE (Parts ID)

PARTS LIST			
REF. NO	PART NO	DESCRIPTION	QTY
1	A-6600606	MOTOR, 220V, PRO-TACKER	1
2	L-100.279	BRUSH HOLDER, 110V & 220V PRO-TACKER	2
3	L-100.689	HEAT ELEMENT, 220V, 1550W, PRO-TACKER	1
4	L-103.224	RING, FIBER	1
5	L-107.132	NOZZLE, 40mm, FLAT	1
6	PRT-75020	HOUSING, OVERMOLD	1
7	PRT-75022	CONNECTING HEAD, PRO-TACKER, 120V/220V	1
8	PRT-75024	HOUSING, FAN, LOWER, PRO-TACKER	1
9	PRT-75026	FAN HOUSING, MID, PRO-TACKER	1
10	PRT-75028	FAN, UPPER & LOWER, PRO-TACKER	2
11	PRT-75032	RUBBER STAND, PRO-TACKER	1
12	PRT-75034	CIRCUIT BOARD, PRO-TACKER, (Works w/ 110V & 220V Units)	1
13	PRT-75036	CORD RESTRAINT, PRO-TACKER	1
14	PRT-75038	KNOB, POTENTIOMETER, 110V, PRO-TACKER	1
15	PRT-75040	POTENTIOMETER, (Works w/ 110V & 220V Units)	1
16	PRT-75042	PHOTO EYE, PRO-TACKER	1
17	PRT-75044	MOUNT, CONTROLLER, 110V, PRO-TACKER	1
18	PRT-75046	TEMPERATURE LIMIT SWITCH, 110V, PRO-TACKER	1
19	PRT-75048	TRIAC, PRO-TACKER, (Works w/ 110V & 220V Units)	1
20	PRT-75050	AIR FILTER, 110V, PRO-TACKER	1
21	PRT-75052	CARBON BRUSH, PRO-TACKER 110V & 220V	2
22	PRT-75054	SLEEVE, HEAT, SMALL	1
23	PRT-75056	TUBE, MICA, INSULATION, SMALL HEATER	1
24	PRT-75058	POWER CORD, 110V, 2 BLADE, 5' LONG	1
25	PRT-75065	LABEL, PRO-TACKER, 220VAC, 1550W	1
26	PRT-75080	CORD RESTRAINT, REAR, PRO-TACKER	1
27	600-06	SWITCH, PRE-HEAT / PLASTIC HEAT	1
28	NS-HARDWARE	SCREW, PAN HEAD PHILLIPS, M3.5 X 0.6mm X 10mm	2
29	NS-HARDWARE	SCREW, M4 X 0.7 X 6mm LONG, PAN HEAD PHILLIPS, 18-8 STAINLESS STEEL	2
30	NS-HARDWARE	SCREW, FLAT HEAD, M3.5 X 0.6mm X 8mm, 18-8 STAINLESS	3
31	NS-HARDWARE	SCREW, M4 X 0.7 X 8mm LONG, PAN HEAD PHILLIPS, 18-8 STAINLESS STEEL	4
32	NS-HARDWARE	SCREW, SHEET METAL, M2.9 X 9.5mm, 18-8 STAINLESS	2

***1.4 PRT-75014, ASSY, PRO-TACKER, 220V, 1550W, W/ 40mm
NOZZLE (Parts ID)***