



Spreader-Bar



Parts ID Manual

Model Number: SB-0101/A

Revision: A

© Copyright 2021 by DEMTECH Services, Inc.

All Rights Reserved

Scope of Manual:

This manual contains procedures for safety, general unpacking, set-up, and operation of your DEMTECH Services, Inc. Spreader-Bar.

The text of this publication, or any part thereof, may not be reproduced or transmitted in any form or by any means, electronic or mechanical, including photocopying, recording, storage in an information retrieval system, or otherwise, without prior written permission of DEMTECH Services, Inc.

Notice

Patents have been granted and/or patent applications are pending or are in the process of preparation on all DEMTECH Services, Inc. developments.

The material in the manual is for informational purposes only and is subject to change without notice.

DEMTECH Services, Inc. assumes no responsibility for any errors that may appear in this manual.

Manual Number: **SB- PARTS ID MANUAL, Revision: A**

DEMTECH Services, Inc.

6414 Capitol Avenue Diamond Springs, CA 95619 U.S.A.

Telephone: (530) 621-3200

Toll Free: (888) 324-9353

Fax: (530) 621-0150

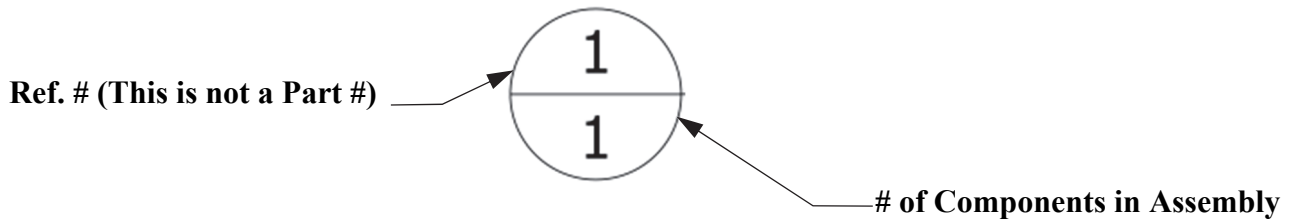
Web Site: www.demtech.com

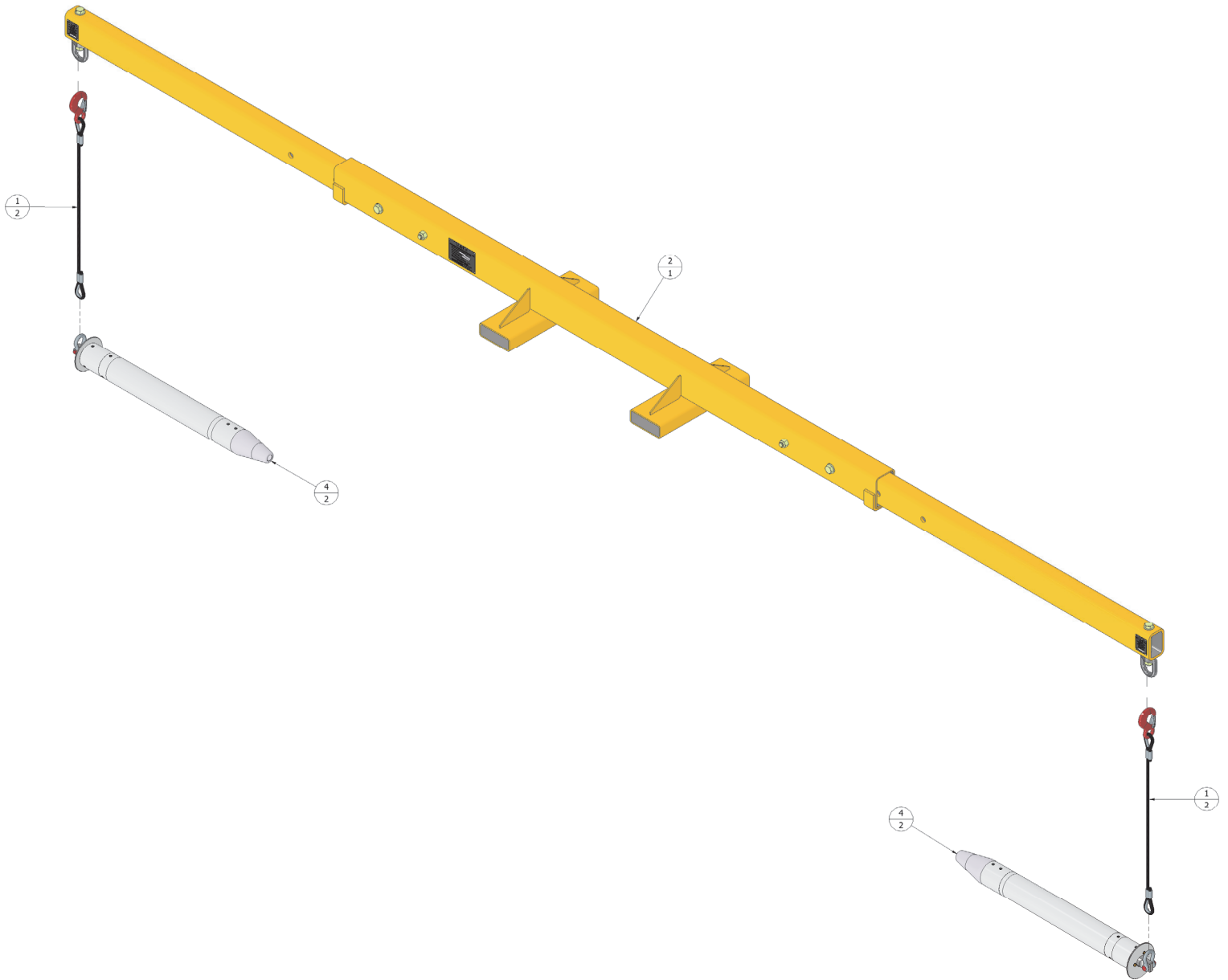
TABLE OF CONTENTS

1 ORDER INSTRUCTIONS.....	PAGE 1
1.1 SB-0101/A – ASSY, SPREADER-BAR (Parts ID).....	Page 2
1.2 SB-0101/A – ASSY, SPREADER-BAR (Parts List).....	Page 3
1.3 SB-0100/A – ASSY, LIFTING SPREADER BAR (Parts ID).....	Page 4
1.4 SB-0100/A – ASSY, LIFTING SPREADER BAR (Parts List).....	Page 5
1.5 SB-M-0100/A – ASSY, SPOOL, SPREADER BAR (Parts ID).....	Page 6
1.6 SB-M-0100/A – ASSY, SPOOL, SPREADER BAR (Parts List).....	Page 7

1 Order Instructions

Refer to the diagrams and related parts lists on the following pages to identify replacement parts for the Spreader-Bar. To locate a part, find it visually on the exploded assembly diagram and note its Reference Number. Next refer to the assemblies parts list to identify the corresponding Part Number using the Reference Number. When ordering parts, be sure to specify the Part Number not the Reference Number. '*NS-Hardware*' refers to non-stock items, these parts are still available for order, please provide the part description to order NS-Hardware items.

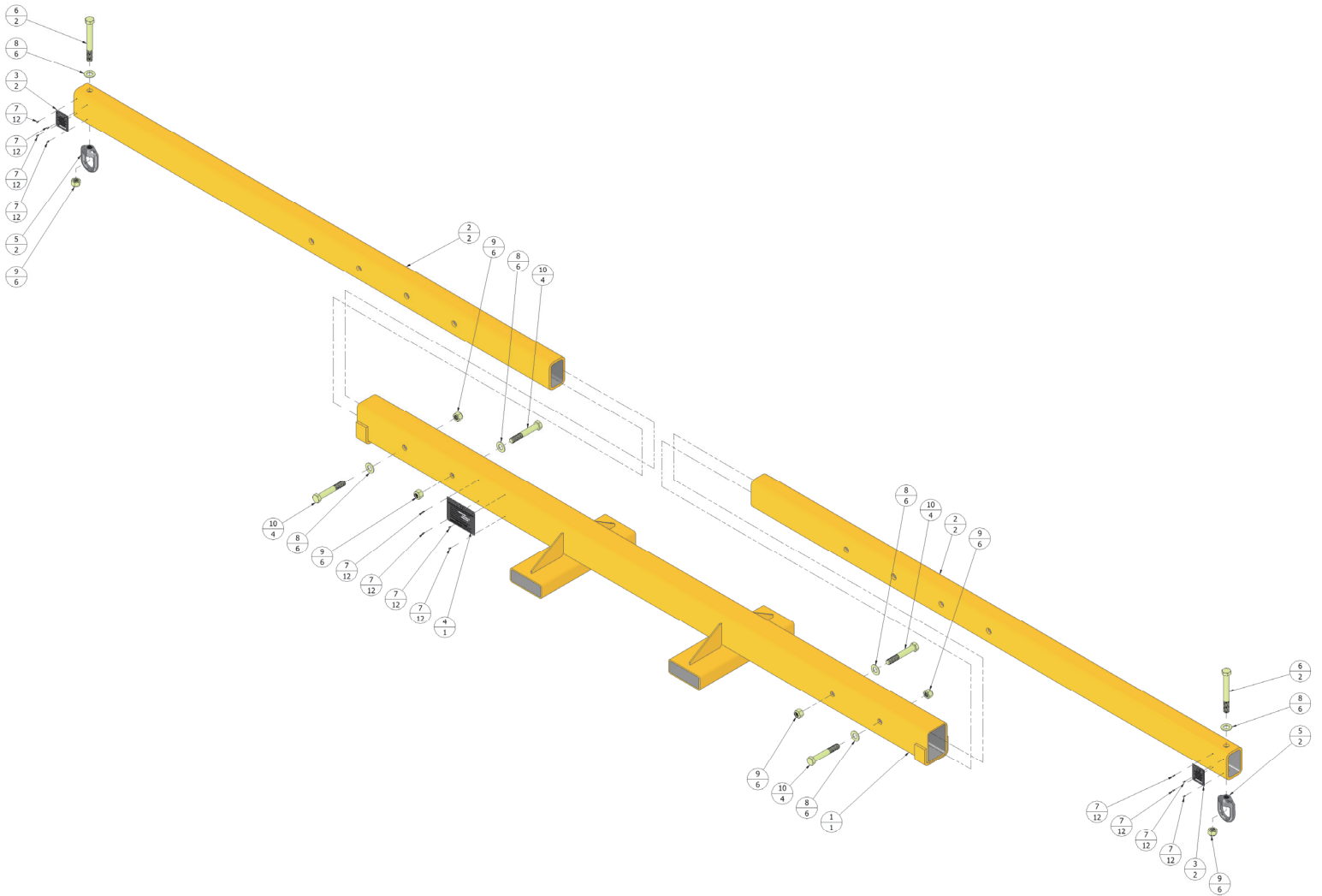




1.1 SB-0101/A – ASSY, SPREADER-BAR (Parts ID)

PARTS LIST			
REF. NO	PART NO	DESCRIPTION	QTY
1	SB-001	ASSEMBLY, LIFT CABLE W/ HOOK	2
2	SB-0100/A	ASSEMBLY, LIFTING SPREADER BAR	1
3	SB-M-0100/A	ASSEMBLY, MISSILE, SPREADER BAR	2

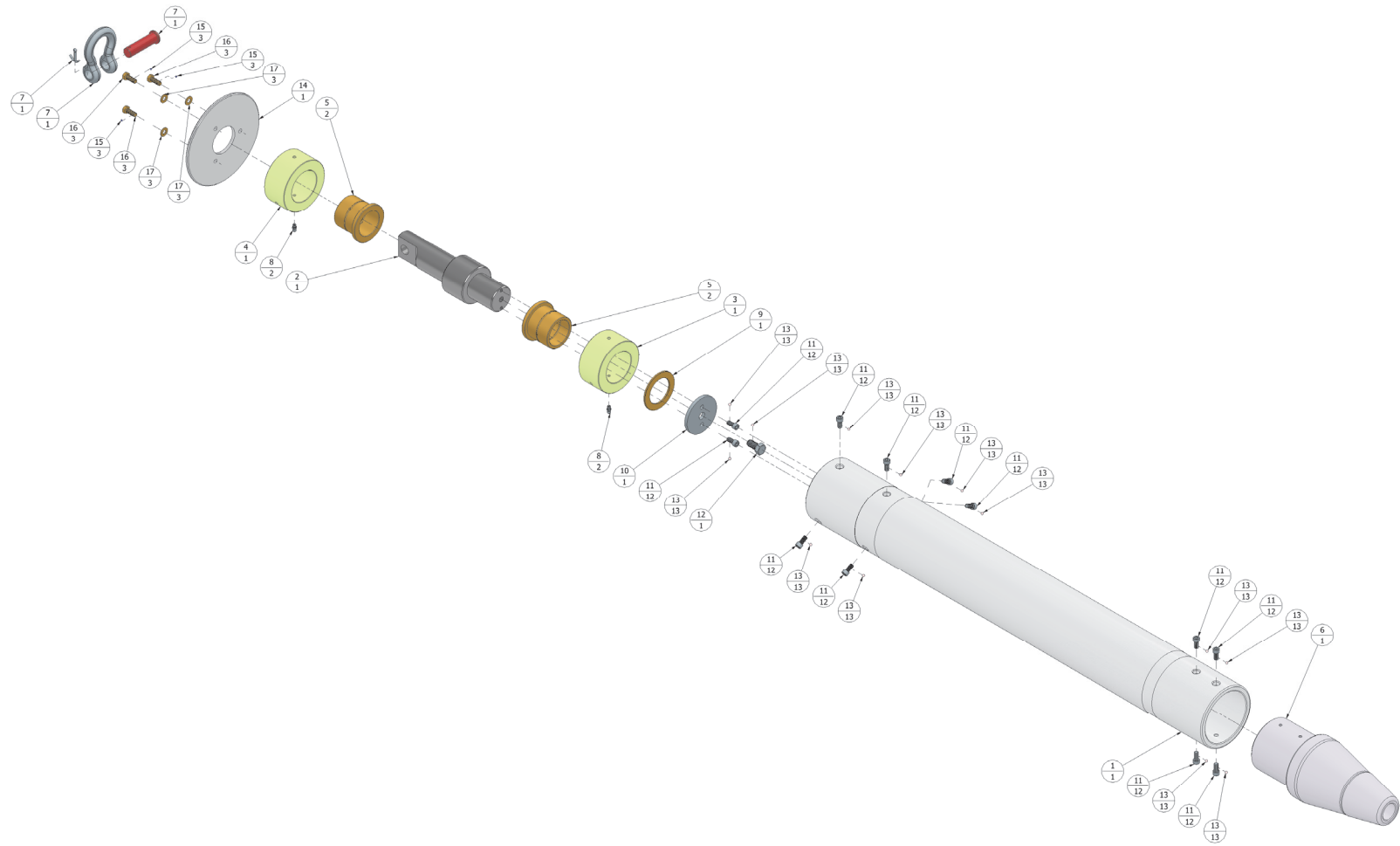
1.2 SB-0101/A – ASSY, SPREADER-BAR (Parts List)



1.3 SB-0100/A – ASSY, LIFTING SPREADER BAR (Parts ID)

PARTS LIST			
REF. NO	PART NO	DESCRIPTION	QTY
1	SB-002	SUPPORT, SPREADER BAR, MAIN WELDMENT	1
2	SB-003	TUBE, OUTRIGGER BEAM	2
3	SB-004	NAMEPLATE, OUTRIGGER BEAM	2
4	SB-005	NAMEPLATE, MAIN IDENTIFICATION	1
5	SB-006	EYE NUT, FORGED, SIZE 7, 7/8", 5 TON WLL	2
6	SB-008	SCREW, 1"-8 X 8-1/2" LONG, HEX HEAD CAP, GRADE 8, ZINC CHROMATE ALLOY STEEL	2
7	SB-010	SCREW, NAIL, SIZE 10 X 3/8" LONG, 18-8 STAINLESS STEEL	12
8	SB-011	WASHER, FLAT, 1-1/16" ID X 2" OD X .145" THICK, GRADE 8, ZINC CHROMATE STEEL	6
9	SB-012	NUT, 1"-8 HEX, NYLON-INSERT LOCKNUT, GRADE 8, ZINC CHROMATE PLATED STEEL	6
10	SB-013	SCREW, 1"-8 X 6-1/2" LONG, HEX HEAD CAP, GRADE 8, ZINC CHROMATE ALLOY STEEL	4

1.4 SB-0100/A – ASSY, LIFTING SPREADER BAR (Parts List)



1.5 SB-M-0100/A – ASSY, SPOOL, SPREADER BAR (Parts ID)

PARTS LIST			
REF. NO	PART NO	DESCRIPTION	QTY
1	SB-M-001	SLEEVE, MISSILE BODY	1
2	SB-M-003	SHAFT, FLANGE BEARING	1
3	SB-M-004-01	COLLAR, FLANGE BEARING, W/O MOUNT HOLES	1
4	SB-M-004-02	COLLAR, FLANGE BEARING, W/ MOUNT HOLES	1
5	SB-M-005	BEARING, FLANGED	2
6	SB-M-007	ASSEMBLY, MISSILE CONE	1
7	SB-M-008	SHACKLE, ROUND PIN ANCHOR, 5/8", 3 1/4 TON WLL	1
8	SB-M-009	FITTING, GREASE, STRAIGHT, 1/4-28 TAPER MALE, 35/64" OAL, 5/16" HEX, ZINC PLATED STEEL	2
9	SB-M-010	BEARING, THRUST, 2" DIA SHAFT X 3" OD X 1/8" THICK, ALLOY 954 BRONZE	1
10	SB-M-011	WASHER, THRUST BEARING, MODIFIED	1
11	SB-M-012	SCREW, 5/16-18 X 5/8" LONG, SOCKET HEAD CAP, ULTRA CORROSION-RESISTANT COATED ALLOY STEEL	12
12	SB-M-013	SCREW, 1/2-13 X 1" LONG, HEX HEAD CAP, GRADE 5, ZINC PLATED STEEL	1
13	SB-M-014	ADHESIVE, THREADLOCKING LIQUID	13
14	SB-M-018	ATTACHMENT, ROLL STOP, SPREADER-BAR	1
15	NS-HARDWARE	ADHESIVE, THREADLOCKING LIQUID, BLUE	3
16	NS-HARDWARE	SCREW, 5/16"-8 X 7/8" LONG, HEX HEAD CAP, GRADE 5, ZINC CHROMATE ALLOY STEEL	3
17	NS-HARDWARE	WASHER, ZINC-PLATED, 5/16" SCREW SIZE	3

1.6 SB-M-0100/A – ASSY, SPOOL, SPREADER BAR (Parts List)