



Pro-Puller



Parts ID Manual

Model Number: S-WINCH-TC

Revision: D

© Copyright 2023 by DEMTECH Services, Inc.

All Rights Reserved

Scope of Manual:

This manual contains procedures for safety, general unpacking, set-up, and operation of your DEMTECH Services, Inc. Pro-Puller.

The text of this publication, or any part thereof, may not be reproduced or transmitted in any form or by any means, electronic or mechanical, including photocopying, recording, storage in an information retrieval system, or otherwise, without prior written permission of DEMTECH Services, Inc.

Notice

Patents have been granted and/or patent applications are pending or are in the process of preparation on all DEMTECH Services, Inc. developments.

The material in the manual is for informational purposes only and is subject to change without notice.

DEMTECH Services, Inc. assumes no responsibility for any errors that may appear in this manual.

Manual Number: **PRO-PULLER PARTS ID MANUAL, Revision: D**

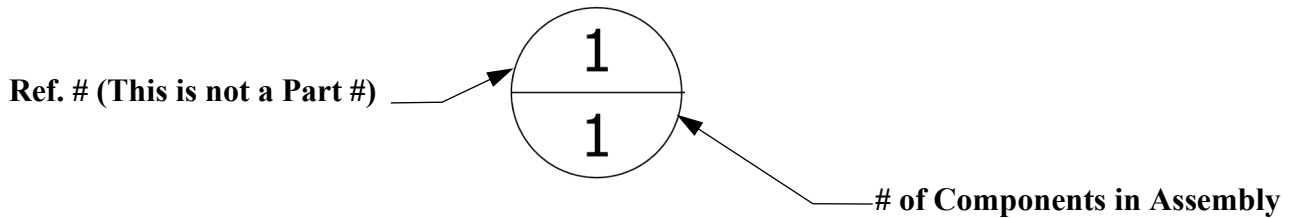
DEMTECH Services, Inc.
6414 Capitol Avenue Diamond Springs, CA 95619 U.S.A.
Telephone: (530) 621-3200
Toll Free: (888) 324-9353
Fax: (530) 621-0150
Web Site: www.demtech.com

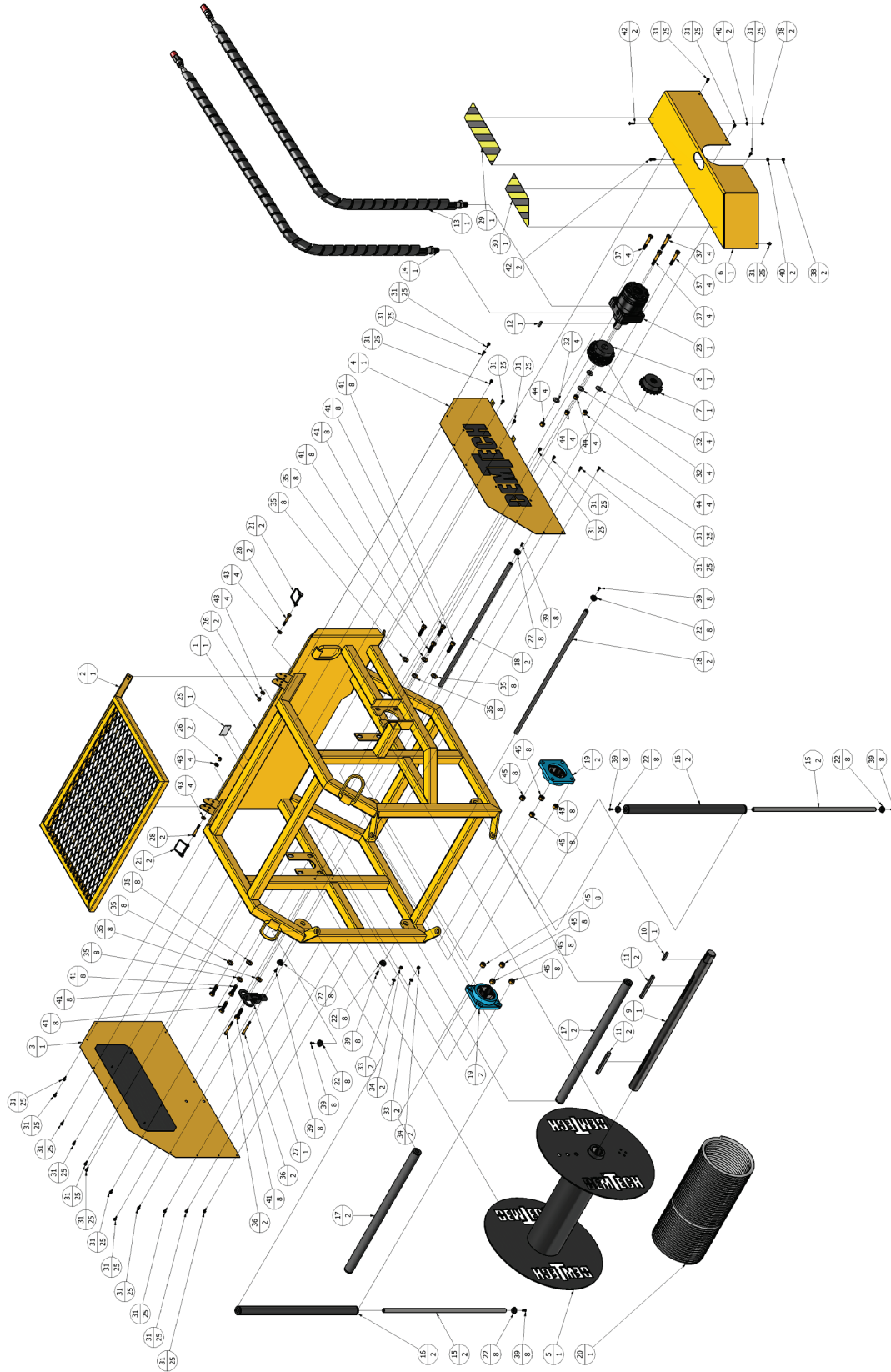
TABLE OF CONTENTS

1	ORDER INSTRUCTIONS.....	PAGE 4
1.1	S-WINCH-TC – ASSY, PRO-PULLER (Parts ID).....	Page 5
1.2	S-WINCH-TC – ASSY, PRO-PULLER (Parts List).....	Page 6
1.3	WIN-280/A – ASSY, ROLLER, VERTICAL, PRO-PULLER (Parts ID).....	Page 7
1.4	WIN-280/A – ASSY, ROLLER, VERTICAL, PRO-PULLER (Parts List).....	Page 8
1.5	WIN-285/A – ASSY, ROLLER, HORIZONTAL, PRO-PULLER (Parts ID).....	Page 9
1.6	WIN-285/A – ASSY, ROLLER, HORIZONTAL, PRO-PULLER (Parts List).....	Page 10

1 Order Instructions

Refer to the diagrams and related parts lists on the following pages to identify replacement parts for the Pro-Puller Sheet Deployment Winch. To locate a part, find it visually on the exploded assembly diagram and note its Reference Number. Next refer to the assemblies parts list to identify the corresponding Part Number using the Reference Number. When ordering parts, be sure to specify the Part Number not the Reference Number. *'NS-Hardware'* refers to non-stock items, these parts are still available for order, please provide the part description to order NS-Hardware items.

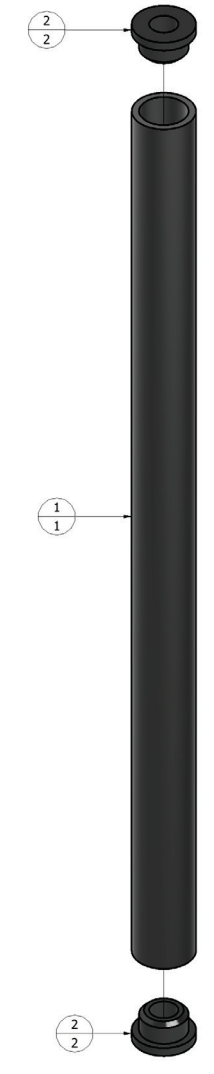




1.1 S-WINCH-TC – ASSY, PRO-PULLER (Parts ID)

Parts List			
ITEM	PART NUMBER	DESCRIPTION	QTY
1	WIN-200	FRAME, WELDMENT, PRO-PULLER	1
2	WIN-205	FRAME, SAFETY GUARD, WELDMENT, PRO-PULLER	1
3	WIN-210/A	LEFT, COVER, W/ BACKING AND RIVETS, PRO-PULLER	1
4	WIN-215/A	RIGHT, COVER, W/ BACKING AND RIVETS, PRO-PULLER	1
5	WIN-220	DRUM, WELDMENT, PRO-PULLER	1
6	WIN-225	COVER, MOTOR, PRO-PULLER	1
7	WIN-230S	SPROCKET, CHAIN COUPLER, 14T-12/24 SPLINED BORE, PRO-PULLER	1
8	WIN-235/A	ASSEMBLY, CHAIN COUPLER, 1-1/4" TO 1-3/4", KEYED, PRO-PULLER	1
9	WIN-245	SHAFT, MAIN, PRO-PULLER	1
10	WIN-250	KEY, DRUM SHAFT TO COUPLER, 3/8" X 3/8" X 2", 1018 STEEL	1
11	WIN-255	KEY, DRUM TO SHAFT, 1/2" X 1/2", 1018 STEEL	2
12	WIN-260	KEY, MOTOR, 5/16 X 5/16, 1095 SPRING STEEL, PRO-PULLER	1
13	WIN-265/A	ASSEMBLY, HYDRAULIC HOSE W/ FITTINGS, FEMALE	1
14	WIN-270/A	ASSEMBLY, HYDRAULIC HOSE W/ FITTINGS, MALE	1
15	WIN-275	SHAFT, ROLLER, PRO-PULLER	2
16	WIN-280/A	ASSEMBLY, ROLLER, VERTICAL, PRO-PULLER	2
17	WIN-285/A	ASSEMBLY, ROLLER, HORIZONTAL, PRO-PULLER	2
18	WIN-290	SHAFT, ROLLER, LOWER, PRO-PULLER	2
19	WIN-295	BEARING, FLANGE-MOUNT, 1.9375" BORE, CAST IRON HOUSING	2
20	WIN-305	ROPE, DOUBLE BRAID POLYESTER, 5/8" X 600'	1
21	WIN-310	PIN, WIRE-LOCK, 5-16" DIAMETER	2
22	WIN-315	CAP, ROLLER, PTFE, W/ PIN HOLE, PRO-PULLER	8
23	WIN-320	MOTOR, HYDRAULIC, 1-1/4" KEYED SHAFT, PRO-PULLER	1
24	WIN-320S	MOTOR, HYDRAULIC, WINCH, W/ 14T-12/24 SPLINED SHAFT	1
25	WIN-365	PLATE, SERIAL, PRO-PULLER	1
26	WIN-380	LOCKNUT, NYLON-INSERT, BRASS, 3/8"-16	2
27	WIN-405	STEP, FOLD UP, PRO-PULLER	1
28	WIN-410	SCREW, HEX, BRASS, 3/8"-16 X 2-1/2"	2
29	DETAIL 01	TAPE, ANTI-SLIP, LEFT SIDE	1
30	DETAIL 02	TAPE, ANTI-SLIP, RIGHT	1
31	NS-HARDWARE	SCREW, SELF TAPPING, ZINC PLATED, 1/4" X 3/4"	25
32	NS-HARDWARE	WASHER, 1/2", 316 STAINLESS	4
33	NS-HARDWARE	WASHER, ZINC-PLATED, 5/16" SCREW SIZE	2
34	NS-HARDWARE	NUT, NYLON, GRADE 8, ZINC YELLOW PLATED, 5/16"-18	2
35	NS-HARDWARE	WASHER, 9/16", ZINC YELLOW PLATED	8
36	NS-HARDWARE	SCREW, HEX, GRADE 8, ZINC YELLOW PLATED, 5/16"-18 X 3"	2
37	NS-HARDWARE	SCREW, HEX HEAD, GRADE 8, ZINC YELLOW PLATED, 1/2"-13 X 3"	4
38	NS-HARDWARE	NUT, NYLON, 18-8 STAINLESS, 1/4"-20	2
39	NS-HARDWARE	SCREW, M6 X 1 X 18mm LONG, FLAT HEAD SOCKET CAP, 18-8 STAINLESS STEEL	8
40	NS-HARDWARE	WASHER, 18-8 STAINLESS STEEL, 1/4"	2
41	NS-HARDWARE	SCREW, HEX, GRADE 8, ZINC YELLOW PLATED, 9/16"-12 X 2"	8
42	NS-HARDWARE	HEAD SCREW, HEX, GRADE 5, 1/4"-20 X 1"	2
43	NS-HARDWARE	WASHER, BRASS, 3/8" SCREW SIZE	4
44	NS-HARDWARE	LOCKNUT, NYLON, ZINC YELLOW PLATED, 1/2"-13	4
45	NS-HARDWARE	NUT, NYLON, GRADE 8, ZINC YELLOW PLATED, 9/16"-12	8
46	NS-HARDWARE	RIVET, BLIND, DOMED, SOLID, 5/32", 18-8 STAINLESS	2

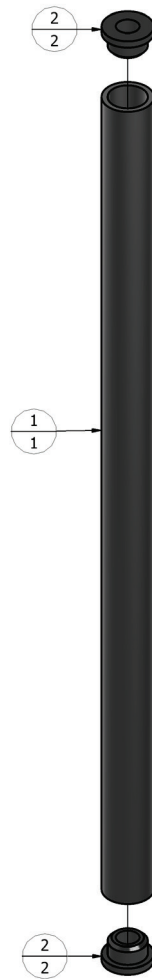
1.2 S-WINCH-TC – ASSY, PRO-PULLER (Parts List)



**1.3 WIN-280/A – ASSY, ROLLER, VERTICAL, PRO-PULLER
(Parts ID)**

Parts List			
REF. NO	PART NUMBER	DESCRIPTION	QTY
1	WIN-280	ROLLER, VERTICAL, PRO-PULLER	1
2	WIN-316	BUSHING, ROLLER, PRO-PULLER	2

***1.4 WIN-280/A – ASSY, ROLLER, VERTICAL, PRO-PULLER
(Parts List)***



***1.5 WIN-285/A – ASSY, ROLLER, HORIZONTAL, PRO-PULLER
(Parts ID)***

Parts List			
Ref. No	PART NUMBER	DESCRIPTION	QTY
1	WIN-285	ROLLER, LOWER, PRO-PULLER	1
2	WIN-316	BUSHING, ROLLER, PRO-PULLER	2

***1.6 WIN-285/A – ASSY, ROLLER, HORIZONTAL, PRO-PULLER
(Parts List)***