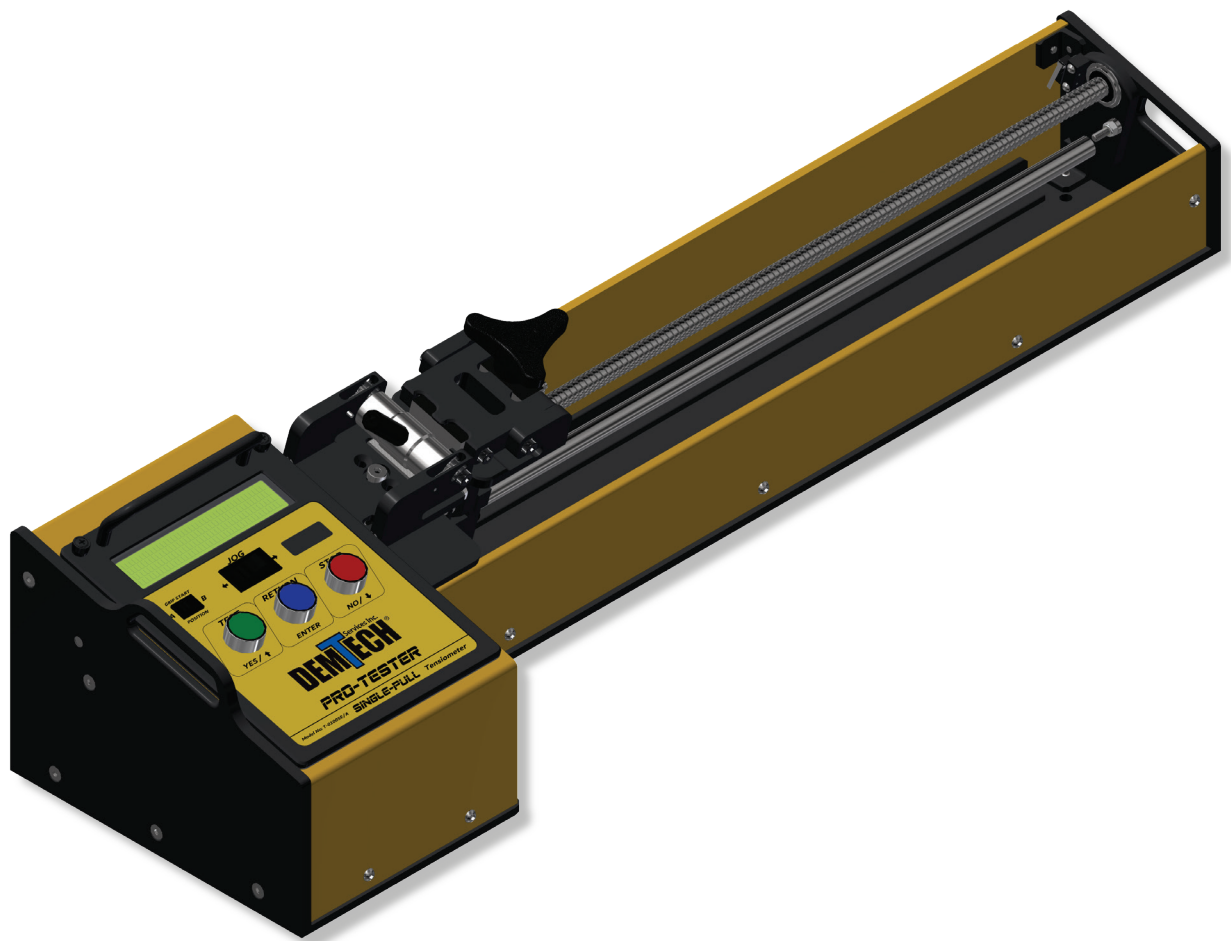




Pro-Tester SE



Pro-Tester SE Parts ID Manual

Model Number: T-0100SE/A

Revision: A

© Copyright 2020 by DEMTECH Services, Inc.

All Rights Reserved

Scope of Manual:

This manual contains diagrams and related parts lists to identify potential service/spare parts for your DEMTECH Services, Inc. Pro-Tester SE™ Field Tensiometer.

The text of this publication, or any part thereof, may not be reproduced or transmitted in any form or by any means, electronic or mechanical, including photocopying, recording, storage in an information retrieval system, or otherwise, without prior written permission of DEMTECH Services, Inc.

Notice

Patents have been granted and/or patent applications are pending or are in the process of preparation on all DEMTECH Services, Inc. developments.

The material in the manual is for informational purposes only and is subject to change without notice.

DEMTECH Services, Inc. assumes no responsibility for any errors that may appear in this manual.

Manual Number: **T-PARTS ID MANUAL/PRO-TESTER SE, Revision: A**

DEMTECH Services, Inc.
6414 Capitol Avenue Diamond Springs, CA 95619 U.S.A.
Telephone: (530) 621-3200
Toll Free: (888) 324-9353
Fax: (530) 621-0150
Web Site: www.demtech.com

TABLE OF CONTENTS

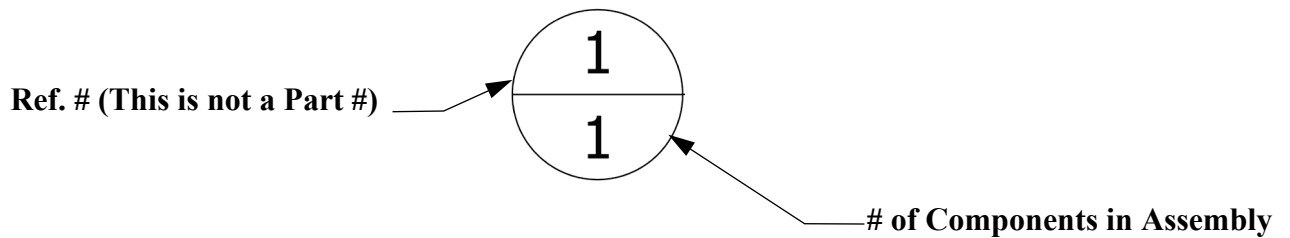
1	ORDERING INSTRUCTIONS.....	PAGE 1
1.1	T-0100SE/A – ASSY, PRO-TESTER SE FIELD TENSIO METER (Parts ID).....	Page 2
1.2	T-0100SE/A – ASSY, PRO-TESTER SE FIELD TENSIO METER (Parts List).....	Page 3
1.3	T-0100SE/A – ASSY, PRO-TESTER SE FIELD TENSIO METER CONTD. (Parts List).....	Page 4
1.4	T-022/A – ASSY, SAMPLE GRIP, SCREW DOWN (Parts ID).....	Page 5
1.5	T-022/A – ASSY, SAMPLE GRIP, SCREW DOWN (Parts List).....	Page 6
1.6	T-027/A – ASSY, GRIP TO STRAIN GAUGE, (Parts ID).....	Page 7
1.7	T-027/A – ASSY, GRIP TO STRAIN GAUGE (Parts List).....	Page 8
1.1	T-035/A – ASSY, SAMPLE GIP, CAM STYLE (Parts ID).....	Page 9
1.2	T-035/A – ASSY, SAMPLE GRIP, CAM STYLE (Parts List).....	Page 10
1.3	T-028SE/A – ASSY, MAIN CONTROL PANEL (Parts ID).....	Page 11
1.4	T-028SE/A – ASSY, MAIN CONTROL PANEL (Parts List).....	Page 12
1.5	T-057M/A – ASSY, ROTARY ENCODER ISOLATION MOUNT (Parts ID).....	Page 13
1.6	T-057M/A – ASSY, ROTARY ENCODER ISOLATION MOUNT (Parts List).....	Page 14
1.7	T-105SE/A – ASSY, RIGHT SIDE PLATE (Parts ID).....	Page 15
1.8	T-105SE/A – ASSY, RIGHT SIDE PLATE (Parts List).....	Page 16
1.9	T-106SE/A – ASSY, GUIDE SHAFT SUPPORT (Parts ID).....	Page 17
1.10	T-106SE/A – ASSY, GUIDE SHAFT SUPPORT (Parts List).....	Page 18

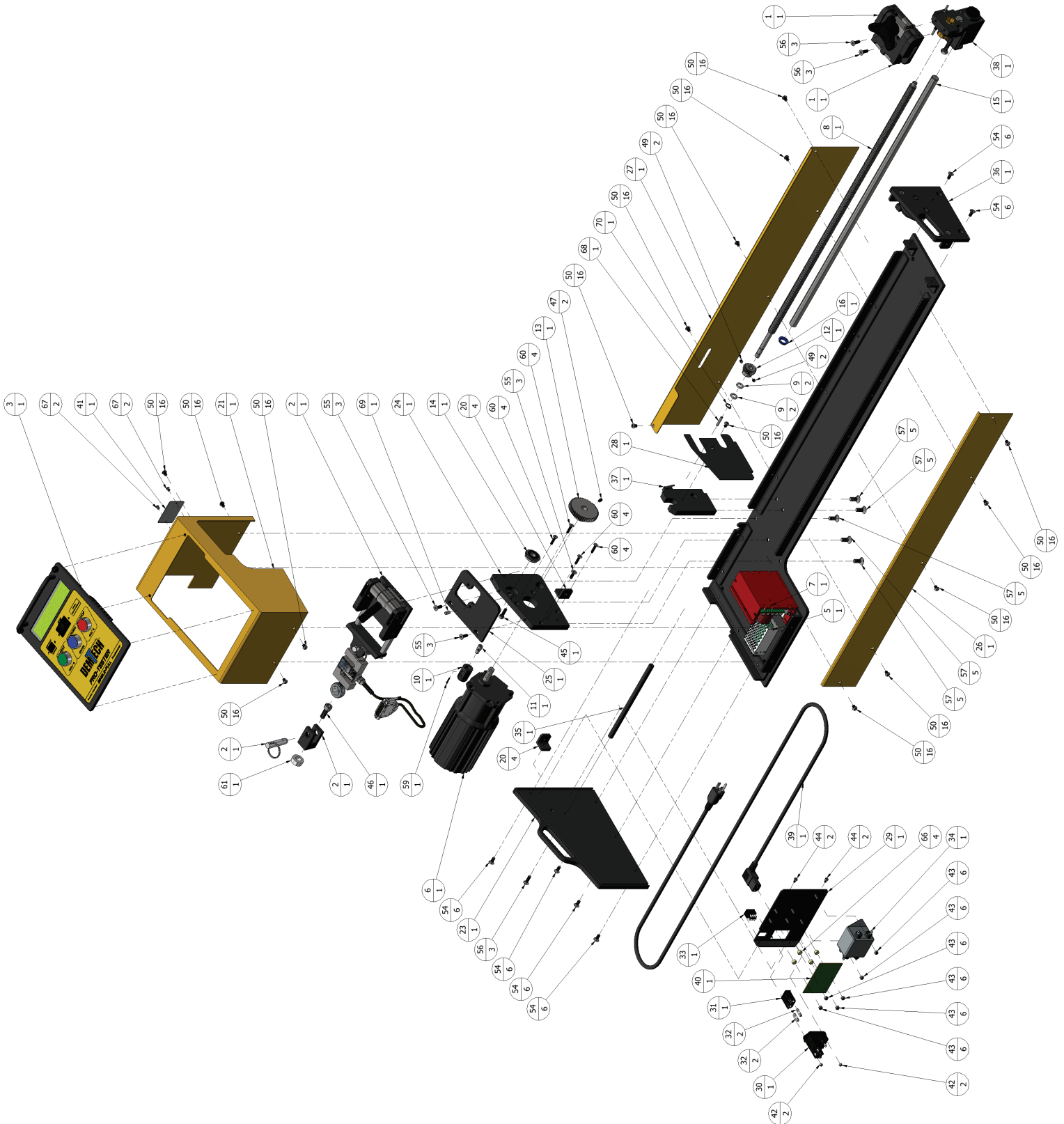
TABLE OF CONTENTS CONTD.

1.11 T-107SE/A – ASSY, SHAFT CARRIAGE PLATE (Parts ID).....	Page 19
1.12 T-107SE/A – ASSY, SHAFT CARRIAGE PLATE (Parts List).....	Page 20

1 Ordering Instructions

Refer to the diagrams and related parts lists on the following pages to identify replacement parts for the Pro-Tester. To locate a part, find it visually on the exploded assembly diagram and note its Reference Number. Next refer to the assemblies parts list to identify the corresponding Part Number using the Reference Number. When ordering parts, be sure to specify the Part Number not the Reference Number. *'NS-Hardware'* refers to non-stock items, these parts are still available for order, please provide the part description to order NS-Hardware items.





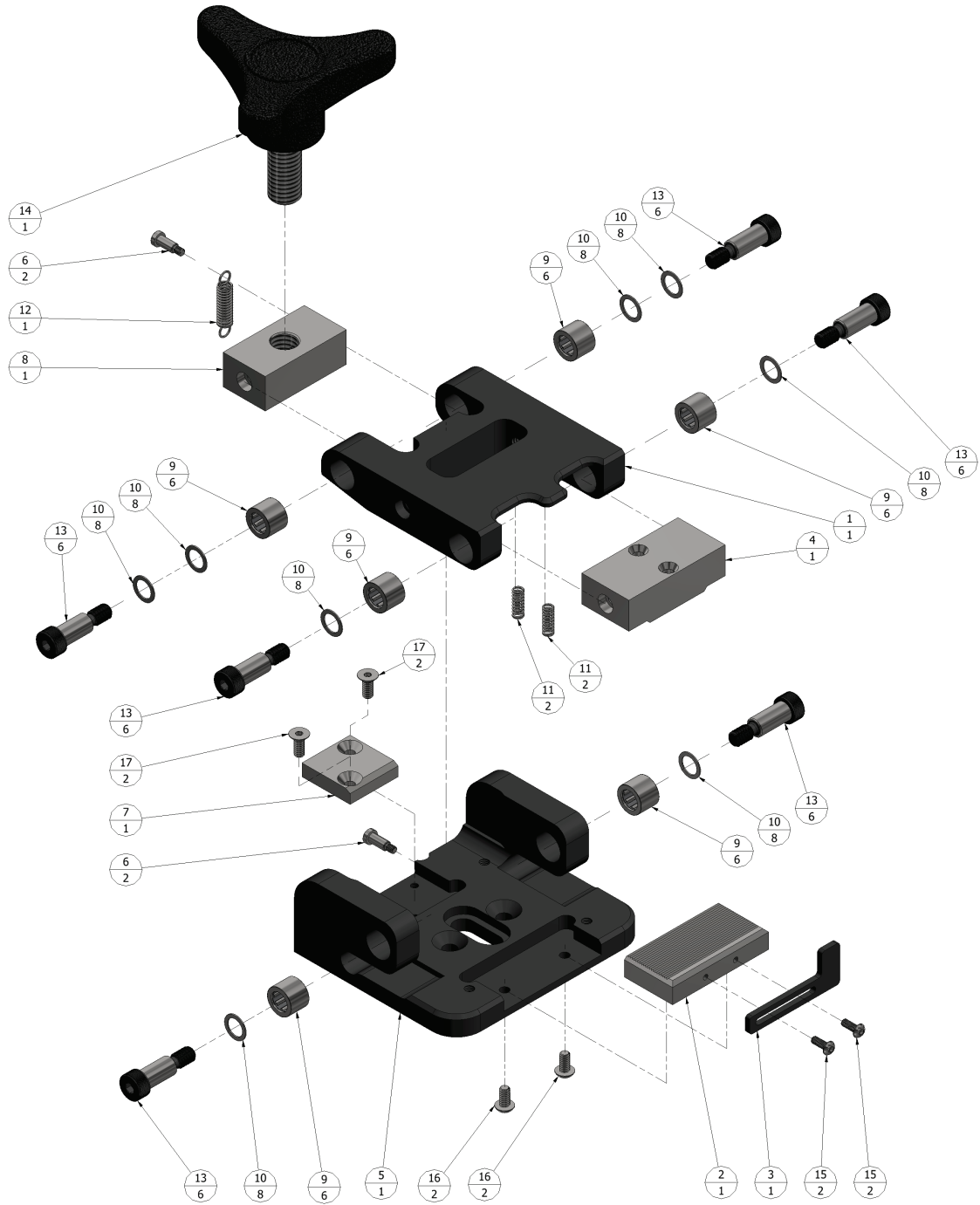
**1.1 T-0100SE/A – ASSY, PRO-TESTER SE FIELD TENSIOMETER
(Parts ID)**

PARTS LIST			
REF. NO	PART NO	DESCRIPTION	QTY
1	T-022/A	ASSEMBLY, SAMPLE GRIP, SCREW DOWN	1
2	T-027/A	ASSEMBLY, SAMPLE GRIP, CAM STYLE	1
3	T-028SE/A	ASSEMBLY, MAIN CONTROL PANEL, SE	1
4	T-040 INSERT	OVERLAY, MAIN CONTROL PANEL	1
5	T-044	POWER SUPPLY, 5 VDC @ 5 A, SINGLE OUTPUT	1
6	T-055	MOTOR, 1/6 HP, VARIABLE SPEED, 60:1 GEAR RATIO, 230 VAC	1
7	T-056	CONTROLLER, 1/2 HP, AC DRIVE, INVERTER DUTY	1
8	T-057+12	SCREW, 5/8" X .20" X 32" LEAD, GRIP DRIVE +12, PRO-TESTER SE	1
9	T-057.2	SPACER, LOWER LEAD SCREW, DOUBLE AND SE	2
10	T-057M/A	ASSEMBLY, ROTARY ENCODER ISOLATION MOUNT	1
11	T-057S/A	ASSEMBLY, LEAD SCREW CLAMP SLEEVE	1
12	T-059SE	GEAR, 20 TOOTH, 20 DP, 14-1/2 DEG, SCREW, SE	1
13	T-060SE	GEAR, 50 TOOTH, 20 DP, 14-1/2 DEG, MOTOR, SE	1
14	T-062	BEARING, 10mm ID X 30mm OD X 9mm W, SEALED, W/ SNAP RING	1
15	T-066+12	SHAFT, GUIDE, LINEAR BEARING +12	1
16	T-066G	GROMMET, SHAFT, 5/8" ID X 11/16" HOLE SNAP-IN, BLUE NYLON	1
17	T-068	ANGLE, MOUNTING, 1" X 1" X 6-1/2" LONG	2
18	T-069SE	ANGLE, MOUNTING, 1" X 1" X 10-3/4" LONG, SE	1
19	T-070+12	ANGLE, MOUNTING, 1" X 1" X 30" LONG +12	2
20	T-071	ANGLE, MOUNTING, 1" X 1" X 1" LONG	4
21	T-072SE	HOUSING, MAIN CONTROL PANEL, SE	1
22	T-073SE	PLATE, MAIN BASE, SUPPORT, SE	1
23	T-074SE	PLATE, LEFT SIDE, END, SE	1
24	T-076SE	PLATE, MOTOR SUPPORT, STANDOFF, SE	1
25	T-085SE	SUPPORT, SAMPLE GRIP ASSY, SE	1
26	T-086SE	COVER, FRONT, SE	1
27	T-087SE	COVER, REAR, SE	1
28	T-088SE	COVER, BELT DRIVE, INSIDE, SE	1
29	T-089SE	BRACKET, POWER INPUT MODULE, SE	1
30	T-090	POWER ENTRY MODULE, PANEL MOUNT	1
31	T-091	FUSE DRAWER, POWER ENTRY MODULE	1
32	T-091F	FUSE, 5mm DIA X 20mm LONG, 250VAC, 5A	2
33	T-092	POWER SWITCH, DPDT, 12A, MOM/OFF/MOM, ROCKER, BLACK	1
34	T-093	FILTER, MAIN AC POWER INPUT	1
35	T-100SE	SHAFT, STIFFENER, SE	1

**1.2 T-0100SE/A – ASSY, PRO-TESTER SE FIELD TENSIOMETER
(Parts List)**

REF. NO	PART NO	DESCRIPTION	QTY
36	T-105SE/A	ASSEMBLY, RIGHT SIDE PLATE, SE	1
37	T-106SE/A	ASSEMBLY, GUIDE SHAFT SUPPORT, SE	1
38	T-107SE/A	ASSEMBLY, SHAFT CARRIAGE PLATE, SE	1
39	T-111	CABLE, POWER, 6.56' POWER CORD BLACK NEMA 5-15P TO IEC 320-C13, RIGHT ANGLE SVT	1
40	T-111A	PRINTED CIRCUIT BOARD, INTERCONNECT, PRO-TESTER	1
41	T-399SE	PLATE, SERIAL, PRO-TESTER SE	1
42	NS-HARDWARE	NUT, HEX, M3 X 0.5 X 5.5mm WIDE X 4mm HIGH, NYLON-INSERT LOCK, ZINC PLATED STEEL	2
43	NS-HARDWARE	NUT, HEX, M4 X 0.7 X 7mm WIDE X 5mm HIGH, NYLON-INSERT LOCK, ZINC PLATED STEEL	6
44	NS-HARDWARE	SCREW, M4 X 0.7 X 6mm LONG, SOCKET HEAD CAP, 18-8 STAINLESS STEEL	2
45	NS-HARDWARE	SCREW, M6 X 1 X 20mm LONG, SOCKET HEAD CAP, 18-8 STAINLESS STEEL	1
46	NS-HARDWARE	SCREW, M10 X 1.5 X 25mm LONG, SOCKET HEAD CAP, 18-8 STAINLESS STEEL	1
47	NS-HARDWARE	SCREW, SET, M6 X 1 X 10mm LONG, KNURL-GRIP, CUP POINT ALLEN, 18-8 STAINLESS STEEL	2
48	NS-HARDWARE	SCREW, M4 X 0.7 X 20mm LONG, PAN HEAD PHILLIPS, 18-8 STAINLESS STEEL	2
49	NS-HARDWARE	SCREW, SET, M6 X 1 X 6mm LONG, CUP POINT ALLEN, 18-8 STAINLESS STEEL	2
50	NS-HARDWARE	SCREW, M6 X 1 X 8mm LONG, BUTTON HEAD SOCKET CAP, 18-8 STAINLESS STEEL	16
51	NS-HARDWARE	SCREW, M3 X 0.5 X 10mm LONG, FLAT HEAD SOCKET CAP, 18-8 STAINLESS STEEL	2
52	NS-HARDWARE	SCREW, M3 X 0.5 X 16mm LONG, FLAT HEAD SOCKET CAP, 18-8 STAINLESS STEEL	2
53	NS-HARDWARE	SCREW, M6 X 1 X 12mm LONG, FLAT HEAD SOCKET CAP, 18-8 STAINLESS STEEL	15
54	NS-HARDWARE	SCREW, M6 X 1 X 14mm LONG, FLAT HEAD SOCKET CAP, 18-8 STAINLESS STEEL	6
55	NS-HARDWARE	SCREW, M6 X 1 X 18mm LONG, FLAT HEAD SOCKET CAP, 18-8 STAINLESS STEEL	3
56	NS-HARDWARE	SCREW, M6 X 1 X 20mm LONG, FLAT HEAD SOCKET CAP, 18-8 STAINLESS STEEL	3
57	NS-HARDWARE	SCREW, M8 X 1.25 X 20mm LONG, FLAT HEAD SOCKET CAP, 18-8 STAINLESS STEEL	5
58	NS-HARDWARE	WASHER, M4 REGULAR SPLIT LOCK, 18-8 STAINLESS STEEL	2
59	NS-HARDWARE	SCREW, 3-48 X 1/2" LONG, SOCKET HEAD CAP, 18-8 STAINLESS STEEL	1
60	NS-HARDWARE	SCREW, 10-32 X 7/8" LONG, FLAT HEAD SOCKET CAP, 18-8 STAINLESS STEEL	4
61	NS-HARDWARE	SPACER, ROUND, .505" ID X 1.00" OD X .375" LONG, ALUMINUM	1
62	NS-HARDWARE	WASHER, M4 FLAT, 4.3mm ID X 9mm OD X 0.8mm THICK, 18-8 STAINLESS STEEL	2
63	NS-HARDWARE	SCREW, SHOULDER, 3/8" DIA X 1/4" LONG X 5/16-18 THREAD, 18-8 STAINLESS STEEL	1
64	NS-HARDWARE	SPACER, ROUND, .166" ID X .375" OD X .250" LONG, NATURAL NYLON	2
65	NS-HARDWARE	SPACER, ROUND, .140" ID X .375" OD X .250" LONG, NATURAL NYLON	2
66	NS-HARDWARE	SPACER, ROUND, .166" ID X .375" OD X .188" LONG, NATURAL NYLON	4
67	NS-HARDWARE	RIVET, 1/8" BLIND, DOMED HEAD, .126-.187" MATL THICK, 18-8 STAINLESS STEEL	2
68	NS-HARDWARE	PIN, DOWEL, 3/16" OD X 1" LONG, HARDENED 416 STAINLESS STEEL	1
69	NS-HARDWARE	PIN, DOWEL, 1/4" OD X 1/2" LONG, 416 HARDENED STAINLESS STEEL	1
70	NS-HARDWARE	SNAP RING, 10mm EXTERNAL, BLACK-PHOSPHATE STEEL	1

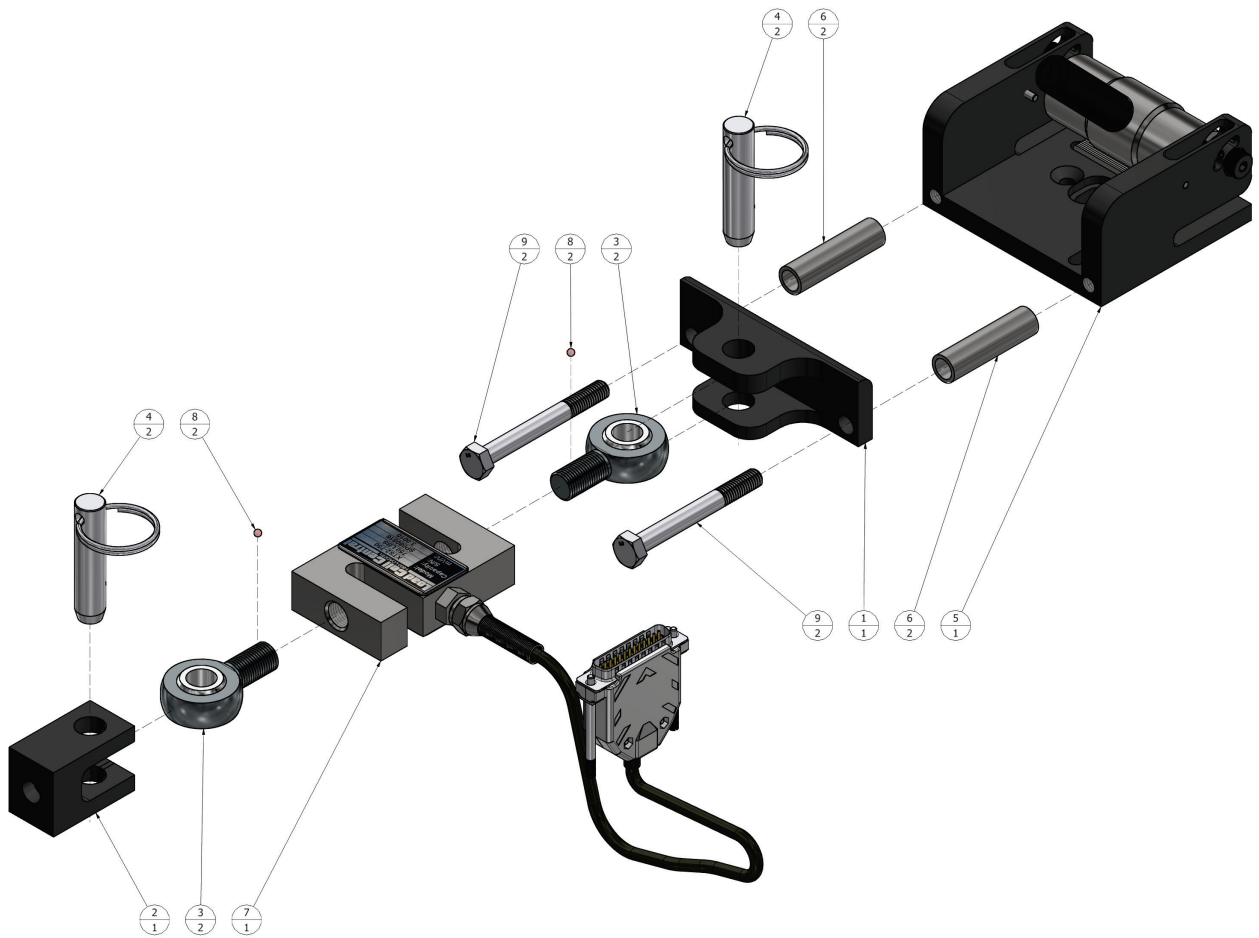
**1.3 T-0100SE/A – ASSY, PRO-TESTER SE FIELD TENSIOMETER
CONTD. (Parts List)**



1.4 T-022/A – ASSY, SAMPLE GRIP, SCREW DOWN (Parts ID)

PARTS LIST			
REF. NO	PART NO	DESCRIPTION	QTY
1	T-005	JAW, SAMPLE GRIP, UPPER	1
2	T-006	GRIP, SAMPLE, LOWER	1
3	T-007	STOP, SAMPLE SIDE, ADJUSTABLE	1
4	T-008B	BLOCK, GRIPPER MOUNT, UPPER	1
5	T-009	JAW, SAMPLE GRIP, LOWER	1
6	T-009SB	SCREW, SHOULDER, 4mm DIA X 8mm LONG X M3 X 0.5 THREAD, LOW PROFILE, 18-8 STAINLESS STEEL	2
7	T-010	PAD, CLAMP SCREW, STRIKER	1
8	T-011	NUT, 1/2-13, UPPER JAW, SWIVEL	1
9	T-013	BEARING, GRIP ASSY, 5/16" ID X 1/2" OD X 3/8" LONG	6
10	T-015	SHIM, .314" ID X .438" OD X .020" THICK, 18-8 STAINLESS STEEL	8
11	T-016	SPRING, COMPRESSION, .180" OD X .563" FREE LENGTH X .026" WIRE DIA, ZINC PLATED STEEL MUSIC WIRE	2
12	T-017	SPRING, EXTENSION, .240" OD X .750" FREE LENGTH X .029" WIRE DIA, STEEL MUSIC WIRE	1
13	T-018	SCREW, SHOULDER, 5/16" DIA X 5/8" LONG X 1/4-20 THREAD, ALLOY STEEL	6
14	T-019	KNOB, THREE LOBE, BLACK THERMOPLASTIC, 1/2"-13 X 1.18" LONG MALE STUD	1
15	NS-HARDWARE	SCREW, M3 X 0.5 X 8mm LONG, BOTTON HEAD CAP, 18-8 STAINLESS STEEL	2
16	NS-HARDWARE	SCREW, M4 X 0.7 X 8mm LONG, BOTTON HEAD CAP, 18-8 STAINLESS STEEL	2
17	NS-HARDWARE	SCREW, M4 X 0.7 X 10mm LONG, FLAT HEAD SOCKET CAP, 18-8 STAINLESS STEEL	2

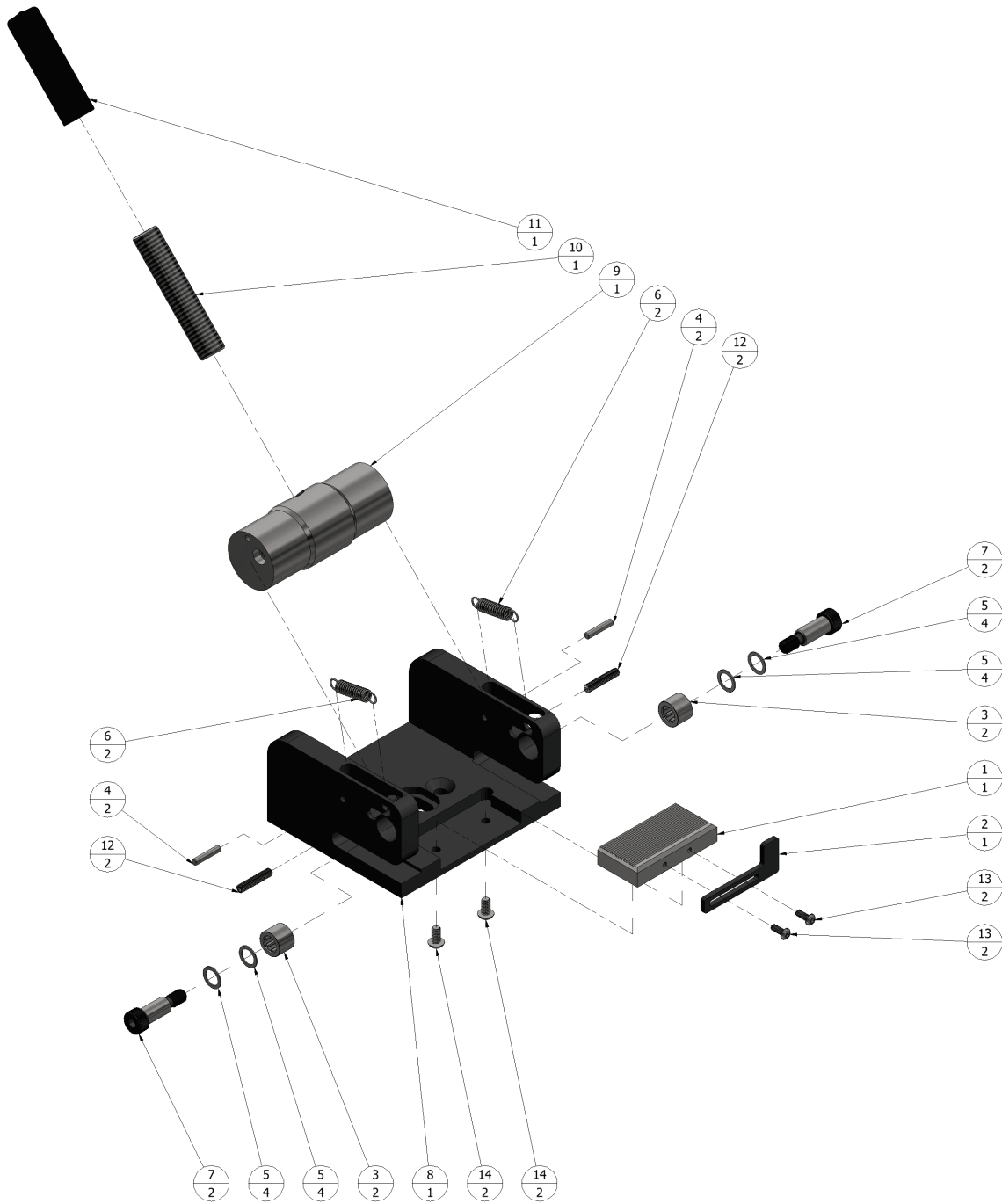
1.5 T-022/A – ASSY, SAMPLE GRIP, SCREW DOWN (Parts List)



1.6 T-027/A – ASSY, GRIP TO STRAIN GAUGE, (Parts ID)

PARTS LIST			
REF. NO	PART NO	DESCRIPTION	QTY
1	T-023	BRACKET, STRAIN GAGE, GRIP ASSY	1
2	T-024	BRACKET, STRAIN GAGE, MOUNT	1
3	T-025	ROD END, STRAIN GAGE, MODIFIED	2
4	T-026	PIN, QUICK-RELEASE, RING-GRIP, 1/2" DIA X 1.3" GRIP LENGTH, ZINC PLATED STEEL	2
5	T-035/A	ASSEMBLY, SAMPLE GRIP, CAM STYLE	1
6	T-065	STANDOFF, STRAIN GAUGE BRACKET	2
7	T-096/A	ASSEMBLY, TENSION/COMPRESSION LOAD CELL, 750 LB	1
8	NS-HARDWARE	ADHESIVE, THREADLOCKING LIQUID, RED	2
9	NS-HARDWARE	BOLT, M8 X 1.25 X 70mm LONG, HEX HEAD CAP, ZINC PLATED STEEL	2

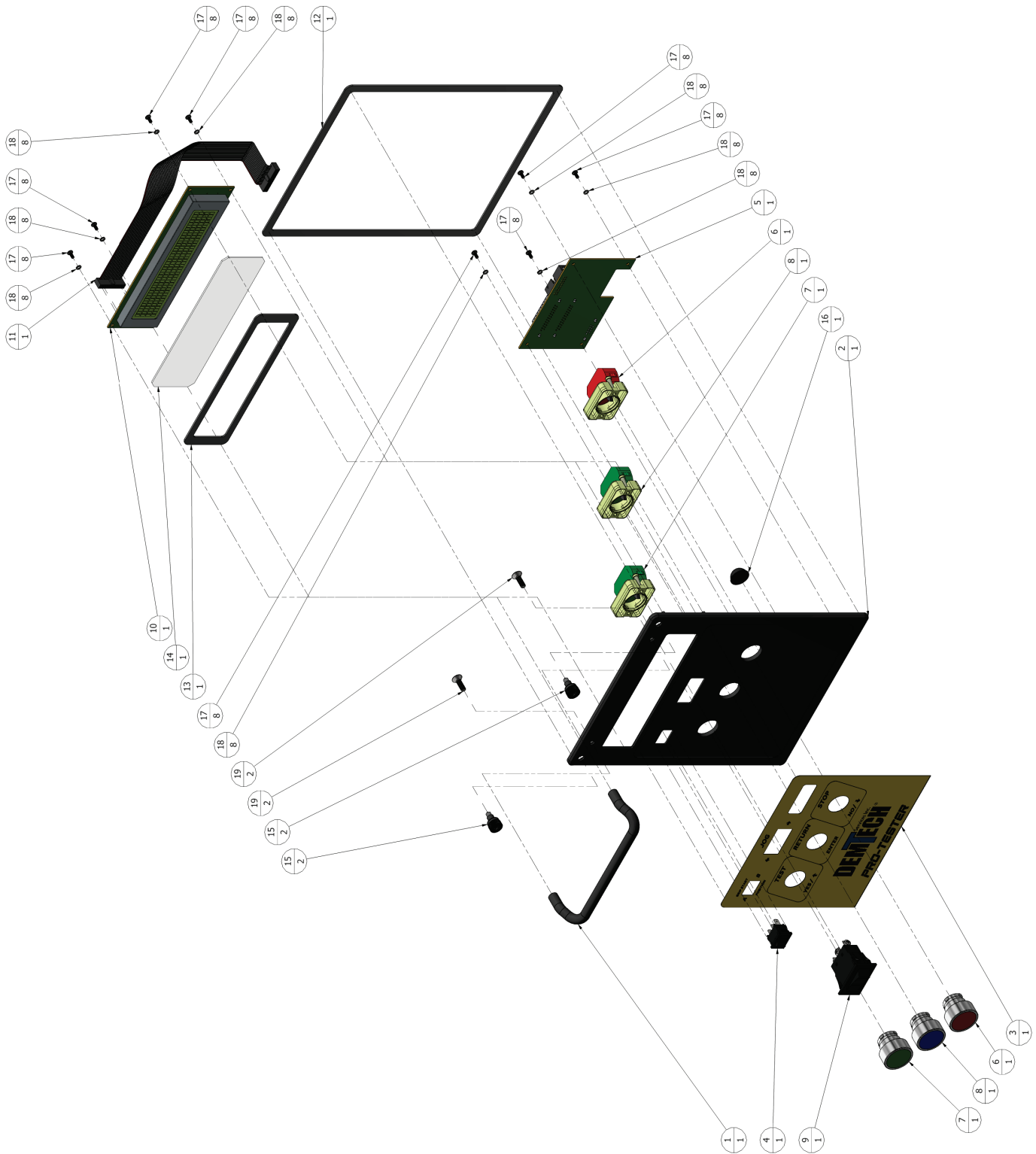
1.7 T-027/A – ASSY, GRIP TO STRAIN GAUGE (Parts List)



1.1 T-035/A – ASSY, SAMPLE GIP, CAM STYLE (Parts ID)

PARTS LIST			
REF. NO	PART NO	DESCRIPTION	QTY
1	T-006	GRIP, SAMPLE, LOWER	1
2	T-007	STOP, SAMPLE SIDE, ADJUSTABLE	1
3	T-013	BEARING, GRIP ASSY, 5/16" ID X 1/2" OD X 3/8" LONG	2
4	T-014	PIN, DOWEL, 1/8" OD X 5/8" LONG, 416 HARDENED STAINLESS STEEL	2
5	T-015	SHIM, .314" ID X .438" OD X .020" THICK, 18-8 STAINLESS STEEL	4
6	T-017	SPRING, EXTENSION, .240" OD X .750" FREE LENGTH X .029" WIRE DIA, STEEL MUSIC WIRE	2
7	T-018	SCREW, SHOULDER, 5/16" DIA X 5/8" LONG X 1/4-20 THREAD, ALLOY STEEL	2
8	T-030	JAW, SAMPLE GRIP, LOWER, CAM	1
9	T-031	CAM, SAMPLE GRIP, PIVOT	1
10	T-032	STUD, 1/2-13 X 2-1/2" LONG, FULLY THREADED, SS	1
11	T-033	CAP, 1/2" ID X 2" LONG, VINYL, BLACK	1
12	T-034	SCREW, SET, M4 X 0.7 X 20mm LONG, ALLEN CUP POINT, 18-8 STAINLESS STEEL	2
13	NS-HARDWARE	SCREW, M3 X 0.5 X 8mm LONG, BOTTON HEAD CAP, 18-8 STAINLESS STEEL	2
14	NS-HARDWARE	SCREW, M4 X 0.7 X 8mm LONG, BOTTON HEAD CAP, 18-8 STAINLESS STEEL	2

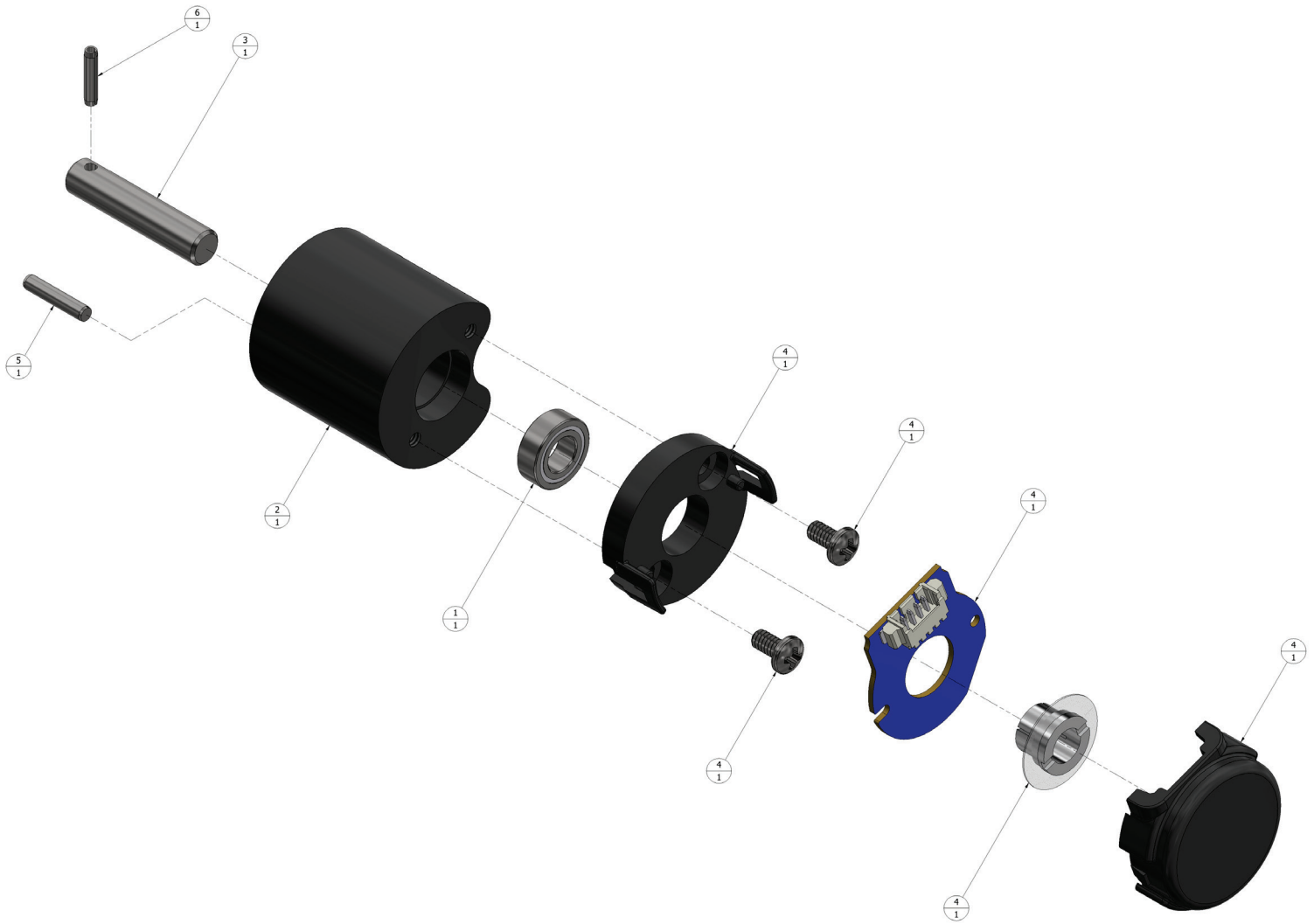
1.2 T-035/A – ASSY, SAMPLE GRIP, CAM STYLE (Parts List)



1.3 T-028SE/A – ASSY, MAIN CONTROL PANEL (Parts ID)

PARTS LIST			
REF. NO	PART NO	DESCRIPTION	QTY
1	T-028H	HANDLE, 3/8" ROUND, 5-1/2" LONG X 1-3/4" TALL X 10-32 THD, OFFSET, BLACK ANODIZED ALUMINUM	1
2	T-039	PANEL, MAIN CONTROL, TENSIO METER	1
3	T-040	OVERLAY, MAIN CONTROL PANEL	1
4	T-041	A/B SWITCH, SPDT, 10A, ON/ON, ROCKER, BLACK	1
5	T-043	ASSEMBLY, MAIN CONTROLLER PC BOARD	1
6	T-046	STOP SWITCH, 22mm METAL PUSHBUTTON, NORMALLY CLOSED, RED	1
7	T-047	TEST SWITCH, 22mm METAL PUSHBUTTON, NORMALLY OPEN, GREEN	1
8	T-048	RETURN SWITCH, 22mm METAL PUSHBUTTON, NORMALLY OPEN, BLUE	1
9	T-049	JOG SWITCH, SPDT, 15A, MOM/OFF/MOM, ROCKER, BLACK	1
10	T-050	ASSEMBLY, LCD CHARACTER DISPLAY, PRO-TESTER	1
11	T-050.1	CABLE, RIBBON, LCD, PRO-TESTER	1
12	T-051	GASKET, CONTROL PANEL, SEALING	1
13	T-052	GASKET, LCD DISPLAY, SEALING	1
14	T-053	WINDOW, LCD DISPLAY, PROTECTIVE	1
15	T-054	FASTENER, 10-32 FLARE-IN CAPTIVE, SPRING RETRACTED	2
16	NS-HARDWARE	BUMPER, 3/4" OD X 3/8" HIGH, ADHESIVE BACKED, BLACK POLYURETHANE RUBBER	1
17	NS-HARDWARE	SCREW, 4-40 X 1/4" LONG, PAN HEAD PHILLIPS, 18-8 STAINLESS STEEL	8
18	NS-HARDWARE	WASHER, #4 REGULAR SPLIT LOCK, 18-8 STAINLESS STEEL	8
19	NS-HARDWARE	SCREW, 10-32 X 5/8" LONG, FLAT HEAD SOCKET CAP, 18-8 STAINLESS STEEL	2

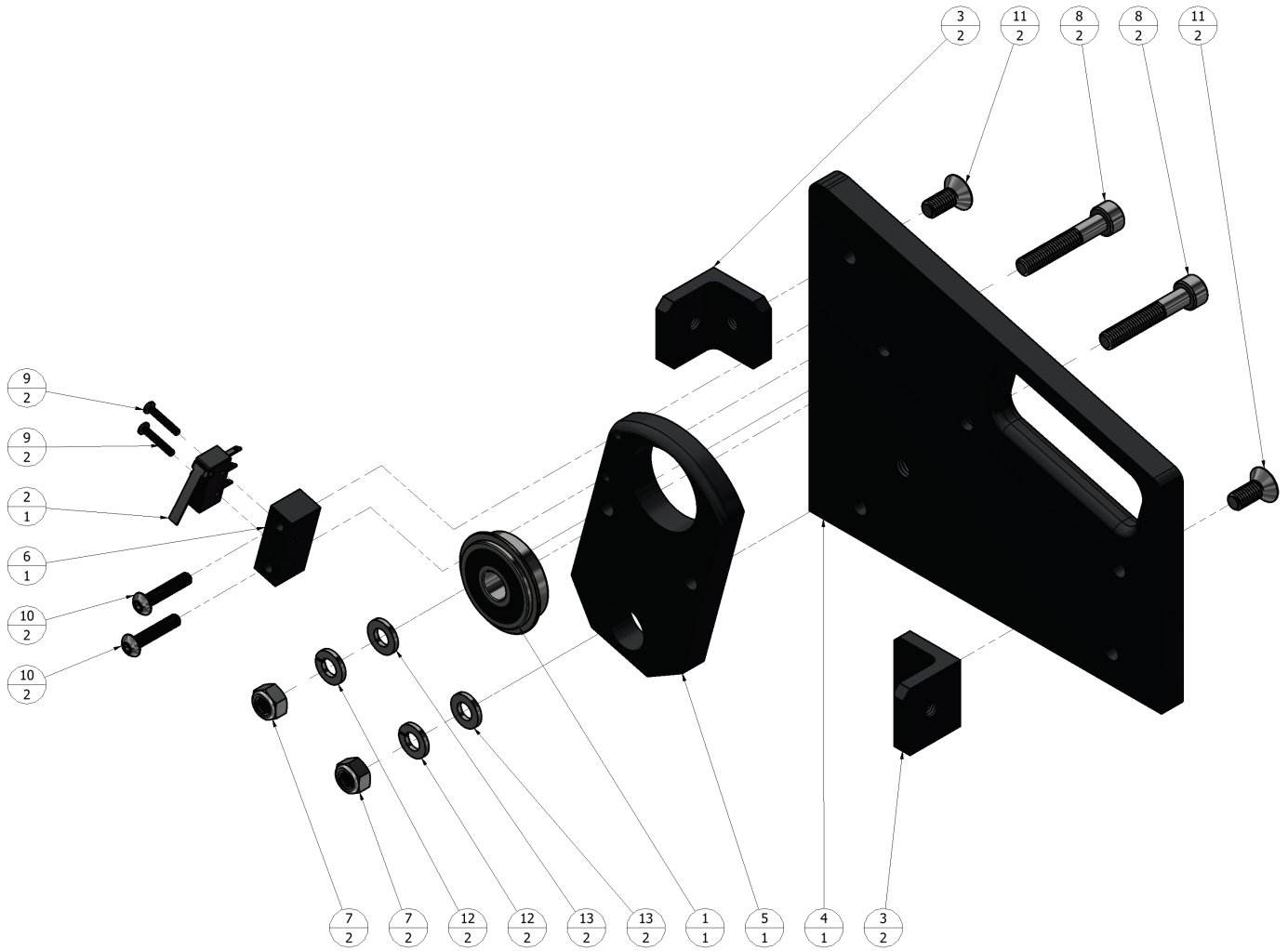
1.4 T-028SE/A – ASSY, MAIN CONTROL PANEL (Parts List)



**1.5 T-057M/A – ASSY, ROTARY ENCODER ISOLATION MOUNT
(Parts ID)**

PARTS LIST			
REF. NO	PART NO	DESCRIPTION	QTY
1	T-057B	BEARING, 3/16" ID X 3/8" OD X 1/8" WIDE, ABEC-5, STAINLESS STEEL	1
2	T-057M	MOUNT, ROTARY ENCODER, ISOLATION	1
3	T-057P	PIN, ROTARY ENCODER WHEEL	1
4	T-095SE	ROTARY ENCODER, 100 PPR, 3/16" BORE	1
5	NS-HARDWARE	PIN, DOWEL, 2mm OD X 10mm LONG, 18-8 STAINLESS STEEL	1
6	NS-HARDWARE	PIN, SPRING, 1/16" OD X 5/16" LONG, 18-8 STAINLESS STEEL	1

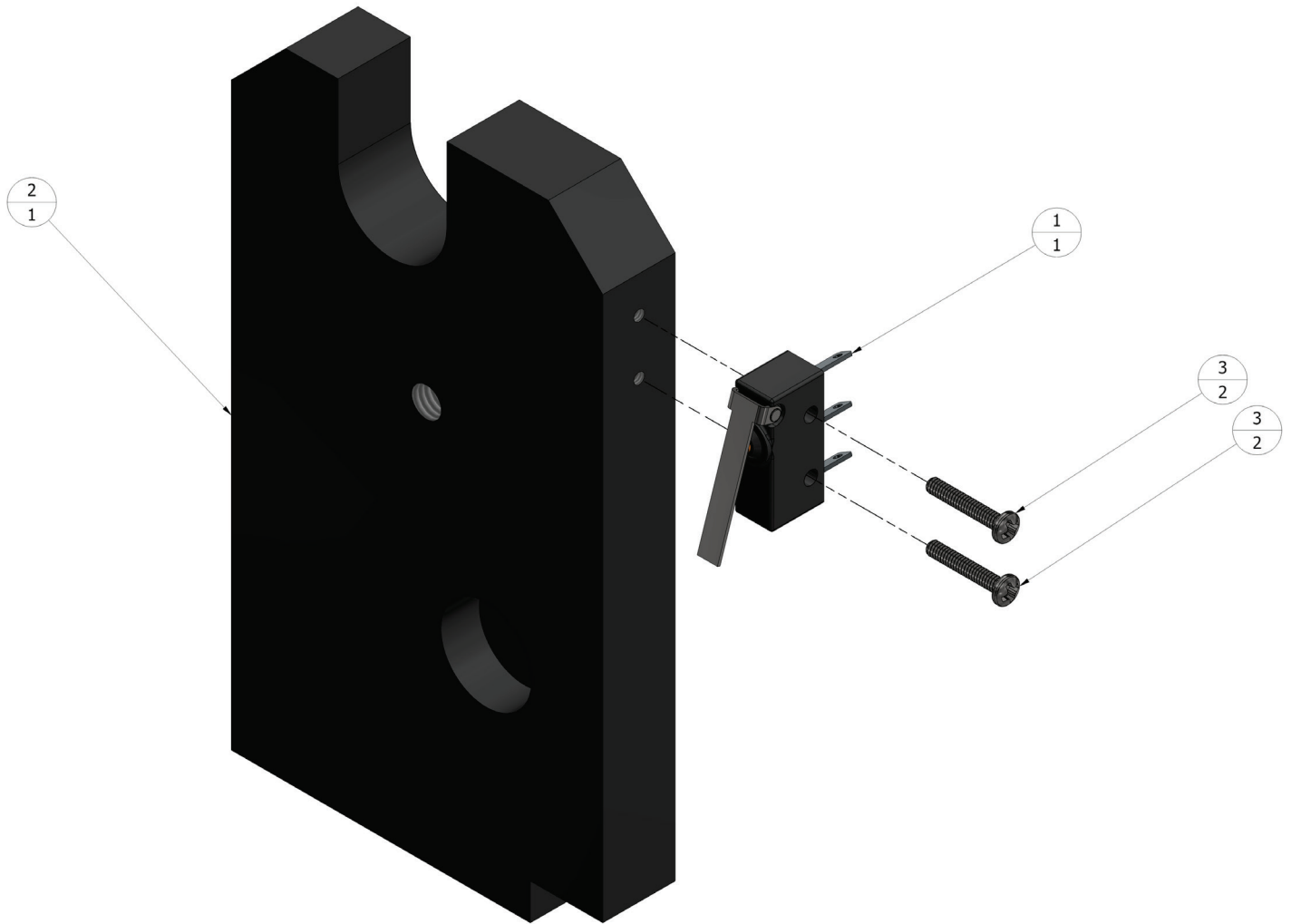
***1.6 T-057M/A – ASSY, ROTARY ENCODER ISOLATION MOUNT
(Parts List)***



1.7 T-105SE/A – ASSY, RIGHT SIDE PLATE (Parts ID)

PARTS LIST			
REF. NO	PART NO	DESCRIPTION	QTY
1	T-062	BEARING, 10mm ID X 30mm OD X 9mm W, SEALED, W/ SNAP RING	1
2	T-063	LIMIT SWITCH, SEALED, SPDT, 5A, .110 QC, LEVER	1
3	T-071	ANGLE, MOUNTING, 1" X 1" X 1" LONG	2
4	T-075SE	PLATE, RIGHT SIDE, END, SE	1
5	T-080SE	PLATE, BEARING SUPPORT, END, SE	1
6	T-083	BRACKET, LIMIT SWITCH, EXTENDED	1
7	NS-HARDWARE	NUT, HEX, M6 X 1 X 10mm WIDE X 6mm HIGH, NYLON-INSERT LOCK, ZINC PLATED STEEL	2
8	NS-HARDWARE	SCREW, M6 X 1 X 35mm LONG, SOCKET HEAD CAP, 18-8 STAINLESS STEEL	2
9	NS-HARDWARE	SCREW, 2-56 X 1/2" LONG, PHILLIPS PAN HEAD, 18-8 STAINLESS STEEL	2
10	NS-HARDWARE	SCREW, M4 X 0.7 X 20mm LONG, BOTTON HEAD CAP, 18-8 STAINLESS STEEL	2
11	NS-HARDWARE	SCREW, M6 X 1 X 14mm LONG, FLAT HEAD SOCKET CAP, 18-8 STAINLESS STEEL	2
12	NS-HARDWARE	WASHER, M6 REGULAR SPLIT LOCK, 18-8 STAINLESS STEEL	2
13	NS-HARDWARE	WASHER, M6 FLAT, 6.4mm ID X 12mm OD X 1.6mm THICK, 18-8 STAINLESS STEEL	2

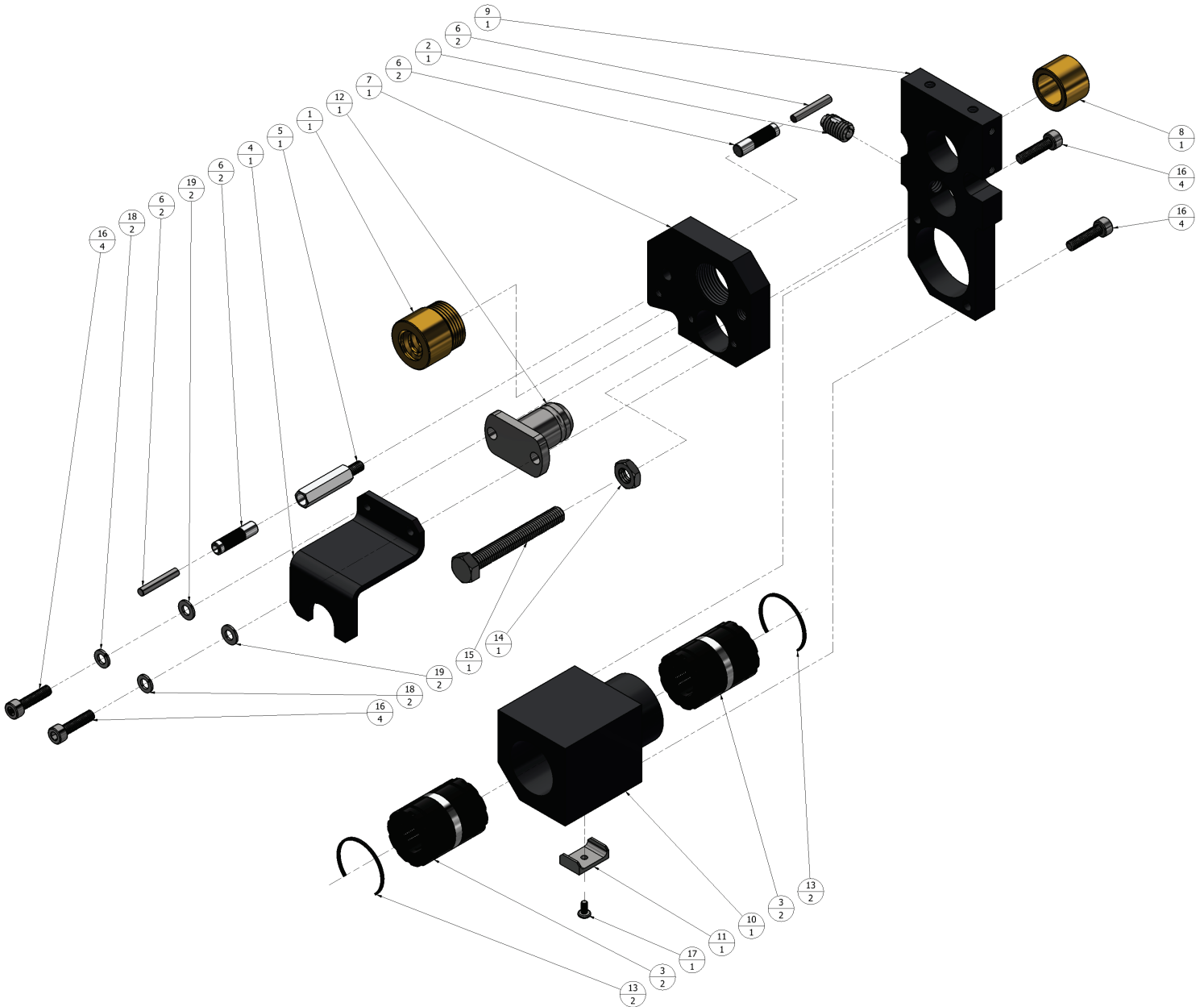
1.8 T-105SE/A – ASSY, RIGHT SIDE PLATE (Parts List)



1.9 T-106SE/A – ASSY, GUIDE SHAFT SUPPORT (Parts ID)

PARTS LIST			
REF. NO	PART NO	DESCRIPTION	QTY
1	T-063	LIMIT SWITCH, SEALED, SPDT, 5A, .110 QC, LEVER	1
2	T-081SE	SUPPORT, GUIDE SHAFT, END, SE	1
3	NS-HARDWARE	SCREW, 2-56 X 1/2" LONG, PHILLIPS PAN HEAD, 18-8 STAINLESS STEEL	2

1.10 T-106SE/A- ASSY, GUIDE SHAFT SUPPORT (Parts List)



1.11 T-107SE/A – ASSY, SHAFT CARRIAGE PLATE (Parts ID)

PARTS LIST			
REF. NO	PART NO	DESCRIPTION	QTY
1	T-058	NUT, 5/8" X .20" LEAD, BRONZE, GRIP DRIVE	1
2	T-064	PLUNGER, BALL, 3/8"-16 X .625" LONG, W/ LOCK, 18-8 STAINLESS STEEL	1
3	T-067	BEARING, 5/8" ID LINEAR BALL, SELF-ALIGNING, CLOSED	2
4	T-077ASE	GUIDE, SCREW PLATE, SHAFT	1
5	T-077B	STANDOFF, SPRING PLUNGER, MODIFIED	1
6	T-077C	PLUNGER, SPRING, ϕ .25" X 1.00" LONG BODY, EXTRA-LONG NOSE, 2011 ALUMINUM	2
7	T-077SE	PLATE, CARRIAGE DRIVE, SCREW, SE	1
8	T-078/BR	BUSHING, 5/8" ID X 7/8" OD X 5/8" LONG, SAE 841 BRONZE	1
9	T-078SE	PLATE, CARRIAGE SLAVE, SHAFT, SE	1
10	T-079	HOUSING, LINEAR BEARING, MOUNT	1
11	T-079C	CLIP, BEARING, LINEAR BEARING HOUSING	1
12	T-084	POST, DRIVE PLATE, DETENT	1
13	T-097C	RING, RETAINING, LINEAR BEARING	2
14	NS-HARDWARE	NUT, HEX JAM, M8 X 1.25 X 13mm WIDE X 4mm HIGH, 18-8 STAINLESS STEEL	1
15	NS-HARDWARE	BOLT, M8 X 1.25 X 60mm LONG, HEX HEAD MACHINE, 18-8 STAINLESS STEEL	1
16	NS-HARDWARE	SCREW, M5 X 0.8 X 20mm LONG, SOCKET HEAD CAP, 18-8 STAINLESS STEEL	4
17	NS-HARDWARE	SCREW, M3 X 0.5 X 6mm LONG, PAN HEAD PHILLIPS, 18-8 STAINLESS STEEL	1
18	NS-HARDWARE	WASHER, M5 REGULAR SPLIT LOCK, 18-8 STAINLESS STEEL	2
19	NS-HARDWARE	WASHER, M5 FLAT, 5.3mm ID X 10mm OD X 1.0mm THICK, 18-8 STAINLESS STEEL	2

1.12 T-107SE/A – ASSY, SHAFT CARRIAGE PLATE (Parts List)