



Pro-X



Parts ID Manual

Model Number: 600-0100/PRT/A

Revision: E

© Copyright 2024 by DEMTECH Services, Inc.

All Rights Reserved

Scope of Manual:

This manual contains diagrams and related parts lists to identify potential service/spare parts for your DEMTECH Services, Inc. Pro-X Extrusion Welder.

The text of this publication, or any part thereof, may not be reproduced or transmitted in any form or by any means, electronic or mechanical, including photocopying, recording, storage in an information retrieval system, or otherwise, without prior written permission of DEMTECH Services, Inc.

Notice

Patents have been granted and/or patent applications are pending or are in the process of preparation on all DEMTECH Services, Inc. developments.

The material in the manual is for informational purposes only and is subject to change without notice.

DEMTECH Services, Inc. assumes no responsibility for any errors that may appear in this manual.

Manual Number: **600-PARTS ID MANUAL/PRO-X, Revision: E**

DEMTECH Services, Inc.

6414 Capitol Avenue Diamond Springs, CA 95619 U.S.A.

Telephone: (530) 621-3200

Toll Free: (888) 324-9353

Fax: (530) 621-0150

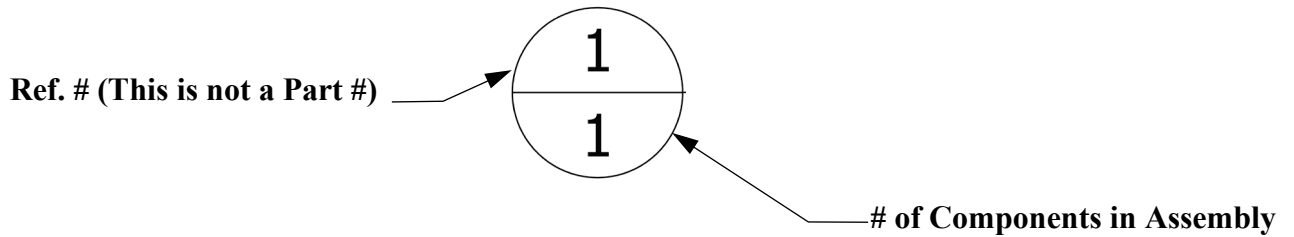
Web Site: www.demtech.com

TABLE OF CONTENTS

| | | |
|----------|---|---------------|
| 1 | ORDERING INSTRUCTIONS..... | PAGE 4 |
| 1.1 | 600-0100/PRT/A – ASSY, PRO-X EXTRUSION WELDER, W/ PRO-TACKER (Parts ID)..... | Page 5 |
| 1.2 | 600-0100/PRT/A – ASSY, PRO-X EXTRUSION WELDER W/ PRO-TACKER (Parts List)..... | Page 6 |
| 1.3 | 600-BARREL/EX/A – ASSY, BARREL COMPLETE, PRO-X (Parts ID)..... | Page 7 |
| 1.4 | 600-BARREL/EX/A – ASSY, BARREL COMPLETE, PRO-X (Parts List)..... | Page 8 |
| 1.5 | 600-DRILL/A – ASSY, DRILL MOTOR COMPLETE, PRO-X (Parts ID)..... | Page 9 |
| 1.6 | 600-DRILL/A – ASSY, DRILL MOTOR COMPLETE, PRO-X (Parts List)..... | Page 10 |
| 1.7 | 600-D08/A – ASSY, MOTOR HOUSING, PRO-X (Parts ID)..... | Page 11 |
| 1.8 | 600-D08/A – ASSY, MOTOR HOUSING, PRO-X (Parts List)..... | Page 12 |
| 1.9 | 600-D100A/A - ASSY, GEAR BOX W/ ARMATURE, CODE: YELLOW, PRO-X (Parts ID)..... | Page 13 |
| 1.10 | ASSY, GEAR BOX COMPLETE, W/ ARMATURE, CODE: YELLOW (Parts List).. | 14 |
| 1.11 | ASSY, GEAR BOX W/O ARMATURE, PRO-X (Parts ID)..... | Page 15 |
| 1.12 | ASSY, GEAR BOX W/O ARMATURE, PRO-X (Parts List)..... | Page 16 |
| 1.13 | 600-100A/A – ASSY, CONTROL BOX (Parts ID)..... | Page 17 |
| 1.14 | 600-100A/A – ASSY, CONTROL BOX (Parts List)..... | Page 18 |
| 1.15 | 600-PREHEAT/2200/A – ASSY, PREHEATER, PRO-TACKER, 220V, 2200W (Parts ID)..... | Page 19 |
| 1.16 | 600-PREHEAT/2200/A – ASSY, PREHEATER, PRO-TACKER, 220V, 2200W (Parts List)..... | Page 20 |

1 Ordering Instructions

Refer to the diagrams and related parts lists on the following pages to identify potential service/spare parts for the Pro-X. To locate a part, find it visually on the exploded assembly diagram and note its Reference Number. Next refer to the assemblies parts list to identify the corresponding Part Number using the Reference Number. When ordering parts, be sure to specify the Part Number not the Reference Number. ‘*NS-Hardware*’ refers to non-stock items, these parts are still available for order, please provide the part description to order NS-Hardware items.

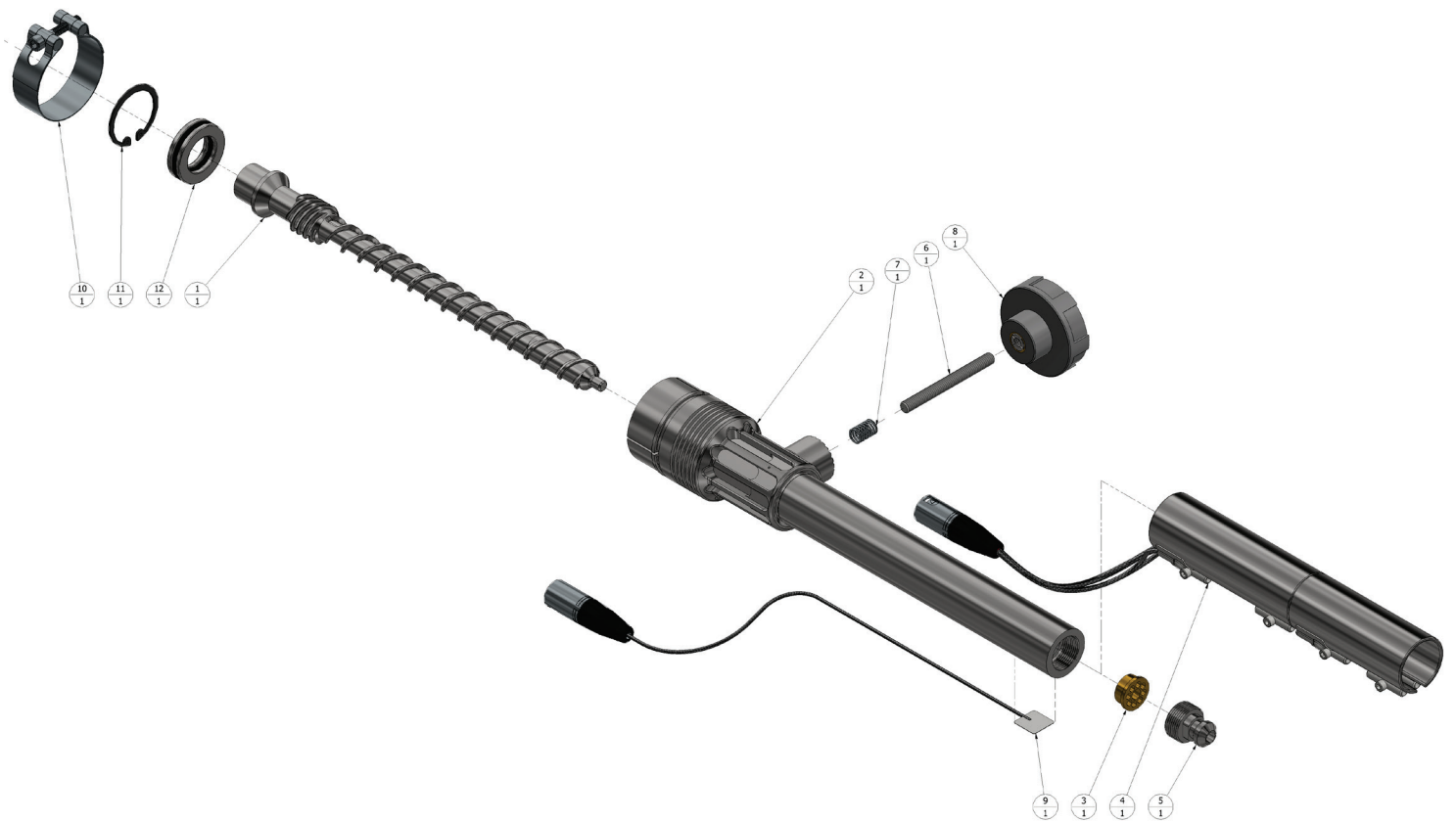




**1.1 600-0100/PRT/A – ASSY, PRO-X EXTRUSION WELDER, W/
PRO-TACKER (Parts ID)**

| PARTS LIST | | | |
|------------|--------------------|--|-----|
| REF. NO | PART NUMBER | DESCRIPTION | QTY |
| 1 | 100-235 | MOUNT, CONDUIT | 1 |
| 2 | 600-100A/A | ASSEMBLY, CONTROL BOX | 1 |
| 3 | 600-13 | NOZZLE, PRE-HEAT MANIFOLD | 1 |
| 4 | 600-14.1D | COVER, CONTROL BOX | 1 |
| 5 | 600-21EX/A | THERMOCOUPLE, AIR, PRO-X, W/ PLUG | 1 |
| 6 | 600-27/A | ASSEMBLY, STANDLE, COMPLETE W/ FOAM AND PLUGS | 1 |
| 7 | 600-36 | BRACKET, PRE-HEATER, PRO-X | 1 |
| 8 | 600-38 | MANIFOLD, EXTRUDER PRE-HEAT, WELDMENT | 1 |
| 9 | 600-38R | RING, REDUCER | 1 |
| 10 | 600-399 | PLATE, SERIAL, PRO-X | 1 |
| 11 | 600-BARREL/EX/A | ASSEMBLY, BARREL COMPLETE, PRO-X | 1 |
| 12 | 600-DRILL/A | ASSEMBLY, DRILL MOTOR COMPLETE, PRO-X | 1 |
| 13 | 600-PREHEAT/2200/A | ASSY, PREHEATER, PRO-TACKER, 220V, 2200W | 1 |
| 14 | TS-600-60-AEG/A | ASSEMBLY, SHOE, OVERLAP, NARROW FOR 1.0-2.0mm (40-80mil) SHEET THICKNESS | 1 |
| 15 | TS-600-60/A | ASSEMBLY, SHOE, OVERLAP FOR 1.0-2.0mm (40-80mil) SHEET THICKNESS | 1 |
| 16 | LABEL-DEMTECH | LABEL, DEMTECH, LARGE | 1 |
| 17 | NS-HARDWARE | PIN, DOWEL, 3/16" OD X 1/4" LONG, 18-8 STAINLESS STEEL | 1 |
| 18 | NS-HARDWARE | PIN, DOWEL, 3/16" OD X 5/8" LONG, 18-8 STAINLESS STEEL | 1 |
| 19 | NS-HARDWARE | SCREW, M4 X 0.7 X 10mm LONG, SOCKET HEAD CAP, 18-8 STAINLESS STEEL | 1 |
| 20 | NS-HARDWARE | SCREW, SET, M6 X 1 X 10mm LONG, CUP POINT ALLEN, 18-8 STAINLESS STEEL | 2 |
| 21 | NS-HARDWARE | SCREW, M4 X 0.7 X 8mm LONG, PAN HEAD PHILLIPS, 18-8 STAINLESS STEEL | 3 |
| 22 | NS-HARDWARE | SCREW, M4 X 0.7 X 10mm LONG, PAN HEAD PHILLIPS, 18-8 STAINLESS STEEL | 2 |
| 23 | NS-HARDWARE | SCREW, M4 X 0.7 X 12mm LONG, PAN HEAD PHILLIPS, 18-8 STAINLESS STEEL | 3 |
| 24 | NS-HARDWARE | SCREW, SET, M6 X 1 X 6mm LONG, CUP POINT ALLEN, 18-8 STAINLESS STEEL | 2 |
| 25 | NS-HARDWARE | SCREW, M5 X 0.8 X 8mm LONG, BUTTON HEAD SOCKET CAP, 18-8 STAINLESS STEEL | 4 |
| 26 | NS-HARDWARE | RIVET, 1/8" BLIND, DOME STYLE, STAINLESS STEEL | 2 |

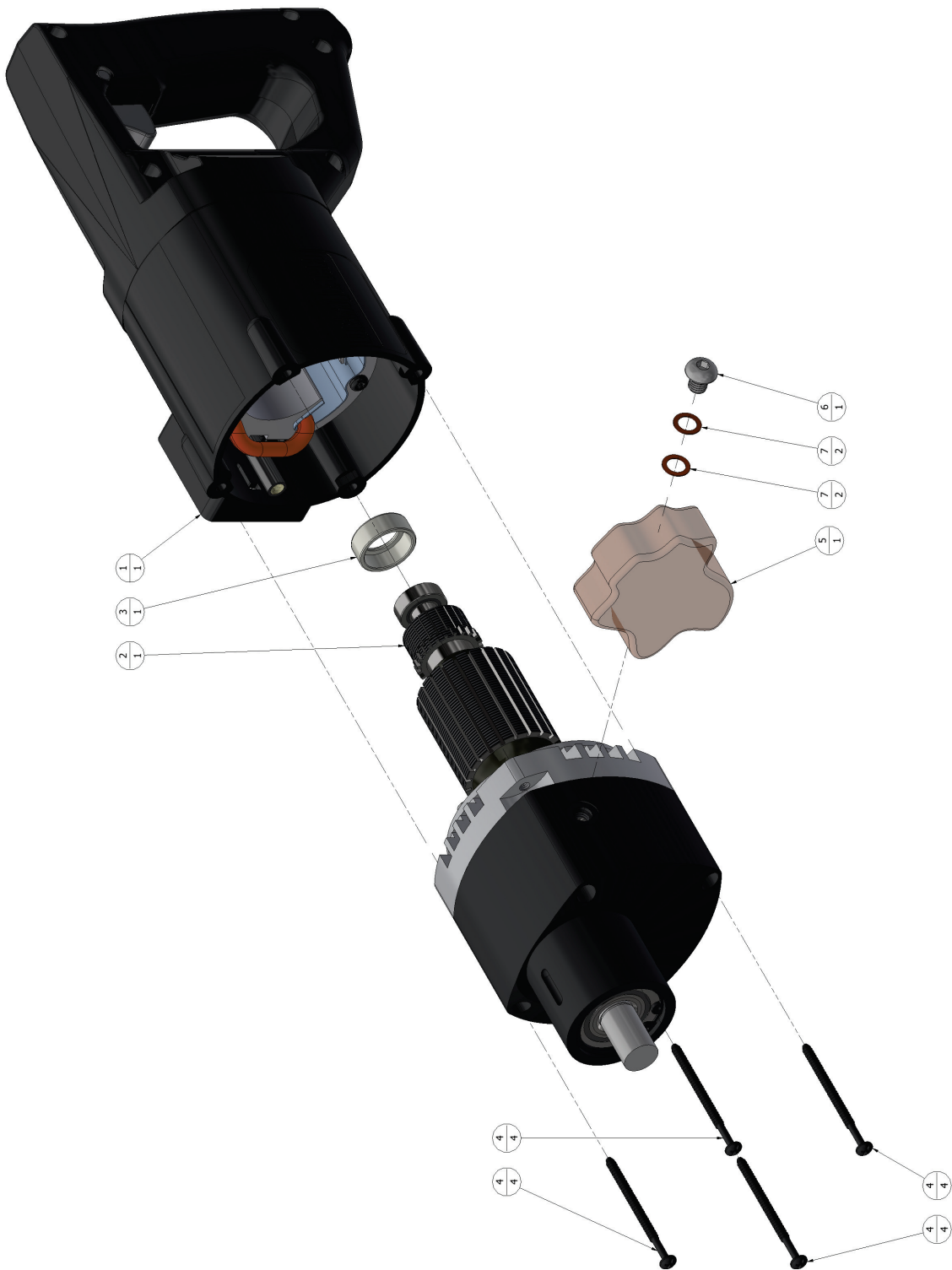
1.2 600-0100/PRT/A – ASSY, PRO-X EXTRUSION WELDER W/ PRO-TACKER (Parts List)



**1.3 600-BARREL/EX/A – ASSY, BARREL COMPLETE, PRO-X
(Parts ID)**

| PARTS LIST | | | |
|------------|--------------|--|-----|
| ITEM | PART NUMBER | DESCRIPTION | QTY |
| 1 | 600-01A-440C | SCREW, EXTRUSION, 440C | 1 |
| 2 | 600-02 | BARREL, EXTRUDER, POST-WELD | 1 |
| 3 | 600-02B.1/BR | INSERT, SCREW SUPPORT, BRONZE | 1 |
| 4 | 600-03EX/A | ASSEMBLY, HEAT BAND, PRO-X, W/ PLUG | 1 |
| 5 | 600-20 | NOZZLE, BARREL OUTPUT, X2 | 1 |
| 6 | 600-22.1 | STUD, 5/16-18 X 3-1/8" LONG, PLAIN STEEL | 1 |
| 7 | 600-22.2 | SPRING, STANDLE | 1 |
| 8 | 600-22/A | ASSEMBLY, STANDLE LOCKDOWN KNOB | 1 |
| 9 | 600-23EX/A | THERMOCOUPLE, BARREL, PRO-X, W/ PLUG | 1 |
| 10 | 600-31 | CLAMP, BARREL | 1 |
| 11 | 600-50 | SNAP RING, THRUST BEARING & DRIVE SHAFT | 1 |
| 12 | 600-D20 | BEARING, THRUST | 1 |

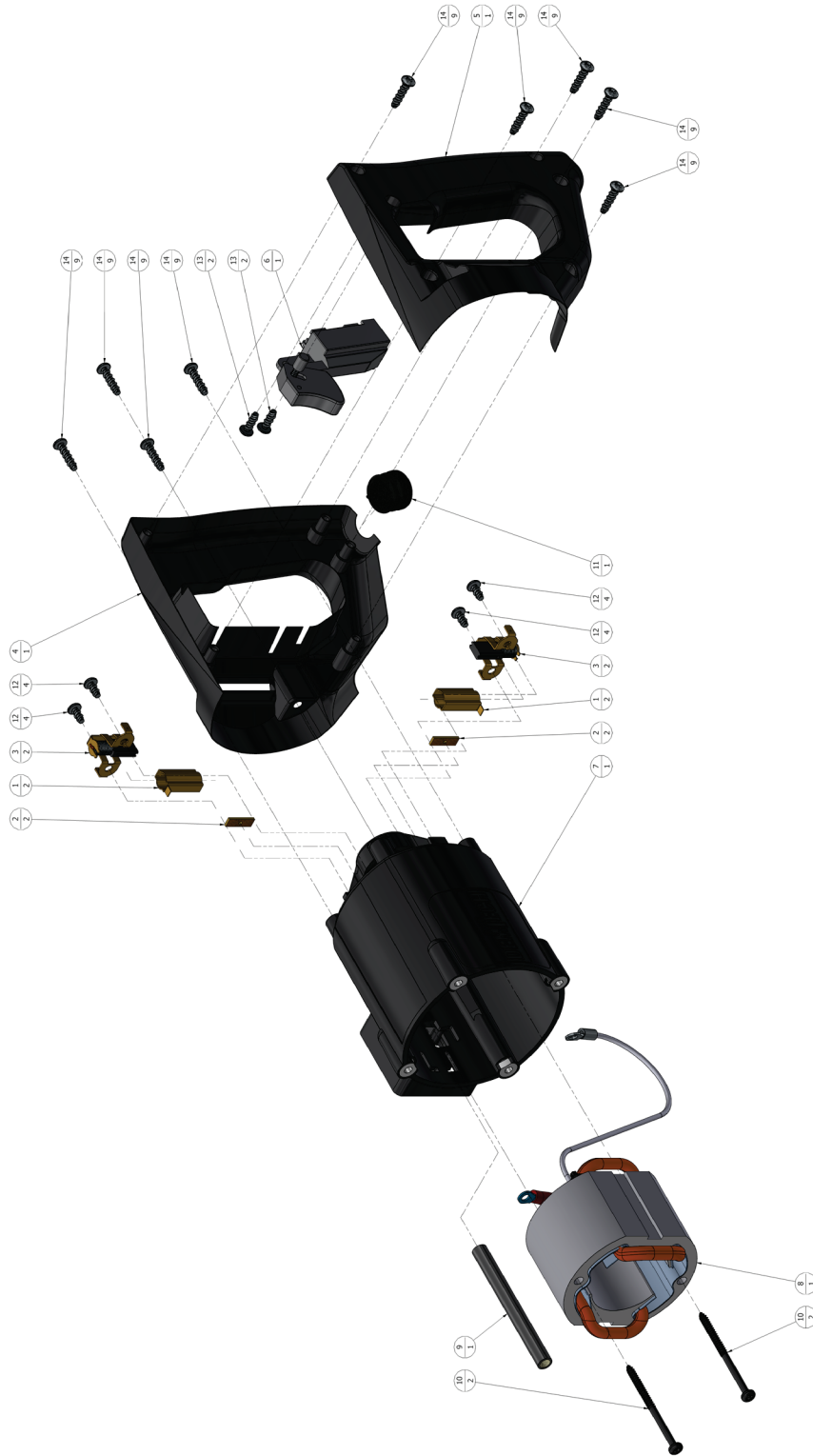
***1.4 600-BARREL/EX/A – ASSY, BARREL COMPLETE, PRO-X
(Parts List)***



**1.5 600-DRILL/A – ASSY, DRILL MOTOR COMPLETE, PRO-X
(Parts ID)**

| PARTS LIST | | | |
|------------|-------------|---|-----|
| REF. NO | PART NUMBER | DESCRIPTION | QTY |
| 1 | 600-D08/A | ASSEMBLY, MOTOR HOUSING COMPLETE, PRO-X | 1 |
| 2 | 600-D100A/A | ASSEMBLY, GEAR BOX COMPLETE, W/ ARMATURE, CODE: YELLOW | 1 |
| 3 | 600-D23 | SEAT, ARMATURE BEARING, CUP | 1 |
| 4 | 600-D24.1EX | SCREW, GEAR HOUSING | 4 |
| 5 | 600-OIL | OIL, GEAR, 75W90, 5 OZ. VOLUME | 1 |
| 6 | NS-HARDWARE | SCREW, M8 X 1.25 X 10mm LONG, BUTTON HEAD CAP, 18-8 STAINLESS STEEL | 1 |
| 7 | NS-HARDWARE | WASHER, .328" ID X .482" OD X .020" THICK, COPPER | 2 |

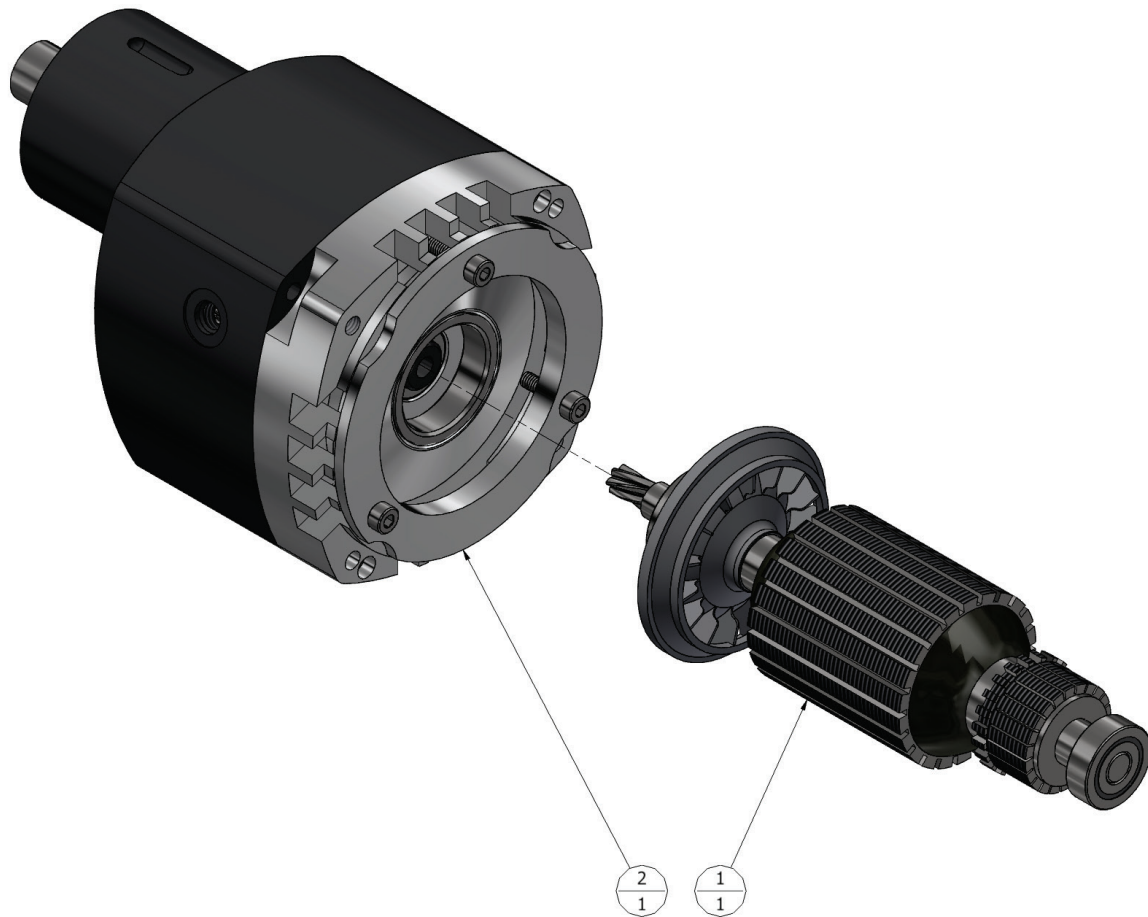
***1.6 600-DRILL/A – ASSY, DRILL MOTOR COMPLETE, PRO-X
(Parts List)***



1.7 600-D08/A – ASSY, MOTOR HOUSING, PRO-X (Parts ID)

| PARTS LIST | | | |
|------------|-------------|--|-----|
| REF. NO | PART NUMBER | DESCRIPTION | QTY |
| 1 | 600-D03 | HOLDER, BRUSH | 2 |
| 2 | 600-D04 | INSULATOR, BRUSH | 2 |
| 3 | 600-D05 | BRUSH, DRILL MOTOR | 2 |
| 4 | 600-D06 | KIT, "D" HANDLE (RIGHT) | 1 |
| 5 | 600-D06 | KIT, "D" HANDLE (LEFT) | 1 |
| 6 | 600-D07 | SWITCH, TRIGGER | 1 |
| 7 | 600-D08 | HOUSING, MOTOR | 1 |
| 8 | 600-D22 | FIELD COIL, 230V, STYLE "A", CODE: YELLOW | 1 |
| 9 | 600-D22/S | SLEEVING, FIELD WINDING WIRES, 3.5" LONG | 1 |
| 10 | 600-D24.1EX | SCREW, GEAR HOUSING | 2 |
| 11 | 600-D30 | PLUG, "D" HANDLE | 1 |
| 12 | NS-HARDWARE | SCREW, #10 X 3/8" LONG, PAN HEAD PHILLIPS, HIGH-LOW, ZINC PLATED STEEL | 4 |
| 13 | NS-HARDWARE | SCREW, #10 X 1/2" LONG, PAN HEAD PHILLIPS, HIGH-LOW, ZINC PLATED STEEL | 2 |
| 14 | NS-HARDWARE | SCREW, #10 X 3/4" LONG, PAN HEAD PHILLIPS, HIGH-LOW, ZINC PLATED STEEL | 9 |

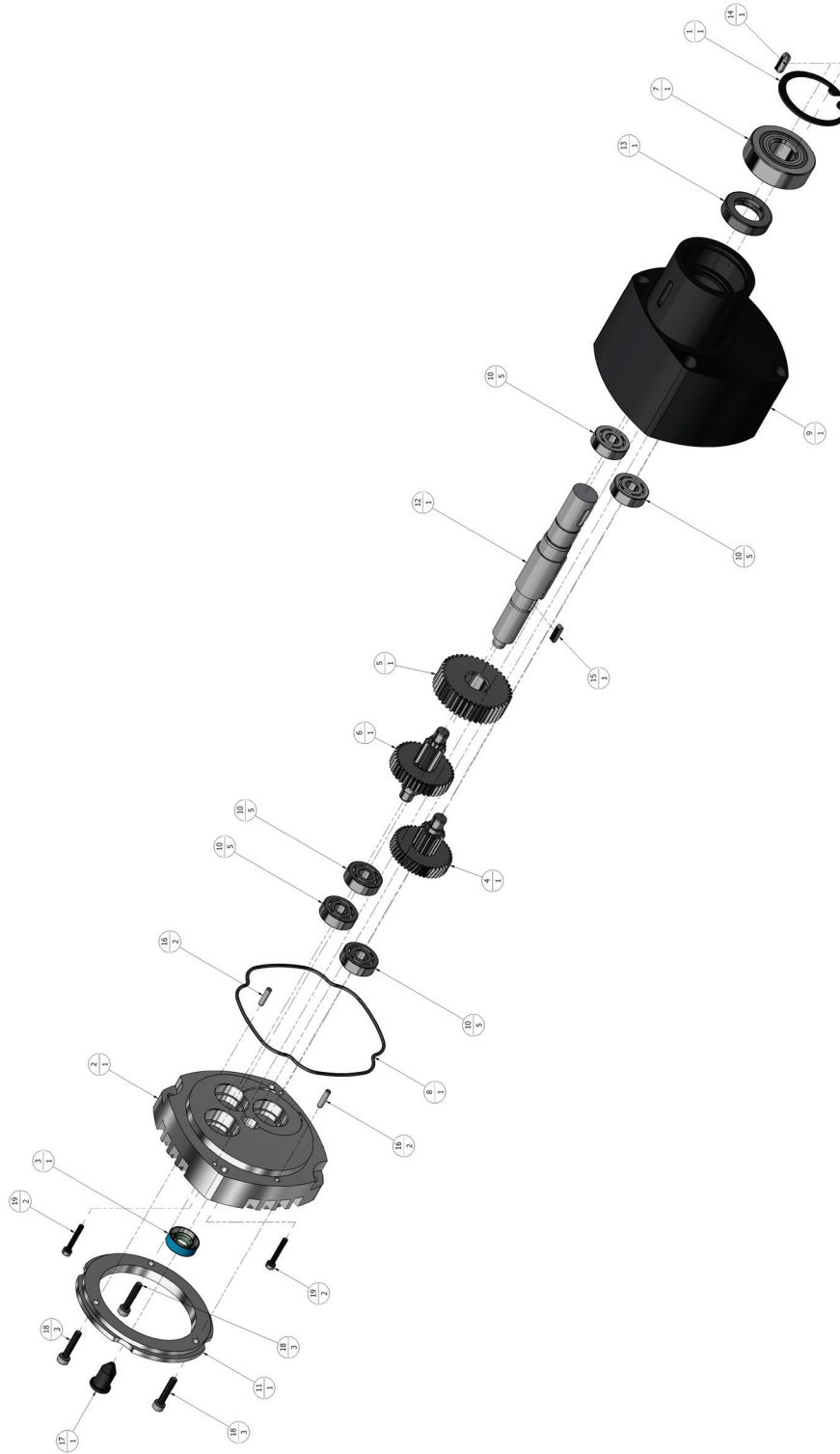
1.8 600-D08/A – ASSY, MOTOR HOUSING, PRO-X (Parts List)



**1.9 600-D100A/A - ASSY, GEAR BOX W/ ARMATURE, CODE:
YELLOW, PRO-X (Parts ID)**

| PARTS LIST | | | |
|------------|-------------|--|-----|
| REF. NO | PART NUMBER | DESCRIPTION | QTY |
| 1 | 600-D02EX/A | ASSEMBLY, MOTOR ARMATURE / BEARING / FAN, CODE: YELLOW | 1 |
| 2 | 600-D100/A | ASSEMBLY, GEAR BOX COMPLETE, W/O ARMATURE | 1 |

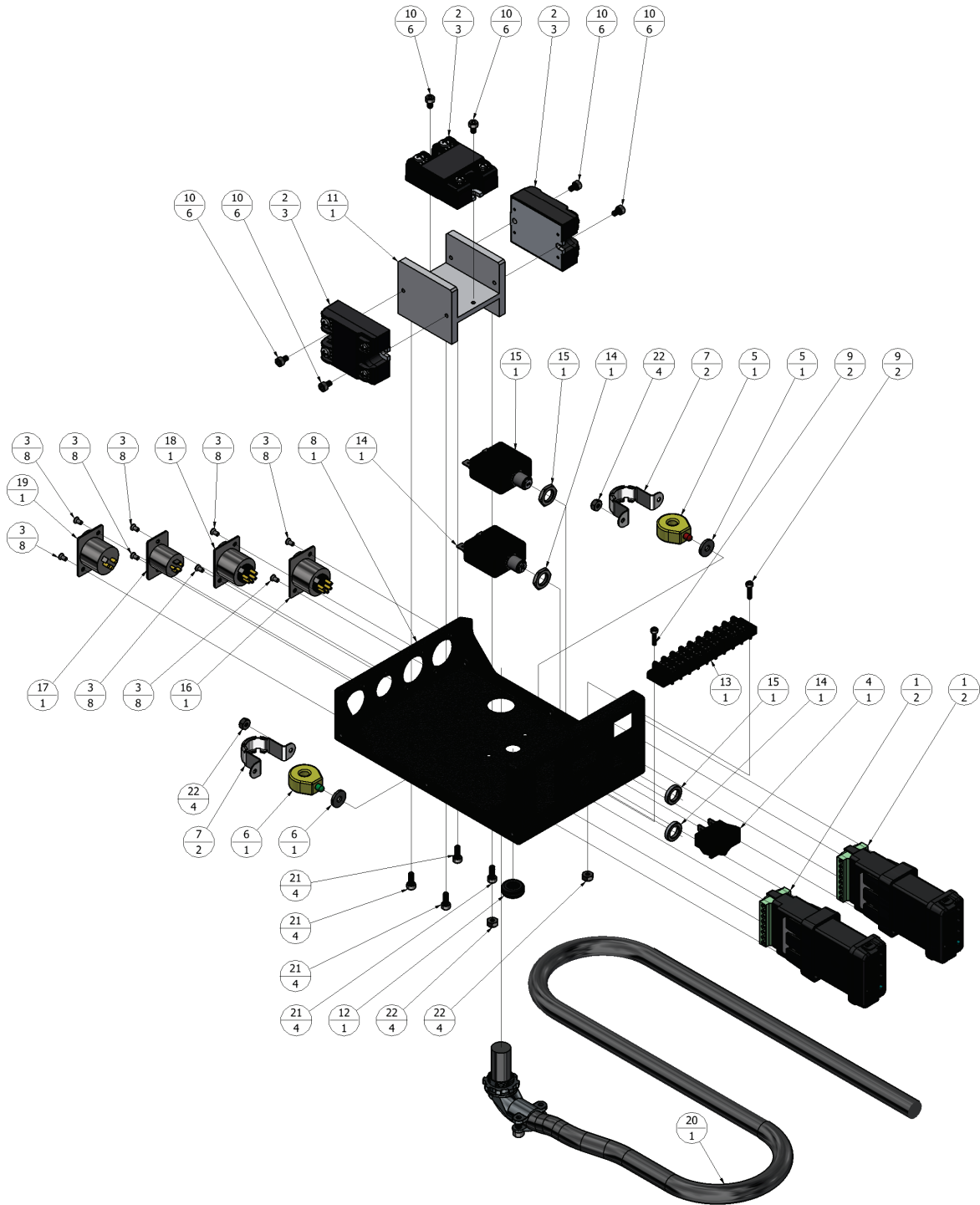
***1.10 ASSY, GEAR BOX COMPLETE, W/ ARMATURE, CODE:
YELLOW (Parts List)***



1.11 ASSY, GEAR BOX W/O ARMATURE, PRO-X (Parts ID)

| PARTS LIST | | | |
|------------|-------------|---|-----|
| REF. NO | PART NUMBER | DESCRIPTION | QTY |
| 1 | 600-50 | SNAP RING, THRUST BEARING & DRIVE SHAFT | 1 |
| 2 | 600-D01EX | PLATE, GEAR CASING, BEARING | 1 |
| 3 | 600-D02/S | SEAL, ARMATURE | 1 |
| 4 | 600-D11 | ASSEMBLY, PINION / HELICAL GEAR SET | 1 |
| 5 | 600-D12 | GEAR, DRIVE SHAFT, LARGE | 1 |
| 6 | 600-D15 | ASSEMBLY, PINION / SPUR GEAR SET | 1 |
| 7 | 600-D17 | BEARING, DRIVE SHAFT | 1 |
| 8 | 600-D24/O | O-RING, GEARBOX | 1 |
| 9 | 600-D24EX | CASING, DRILL MOTOR, GEAR | 1 |
| 10 | 600-D25 | BEARING, GEARBOX | 5 |
| 11 | 600-D26 | DISC, BEARING PLATE, VENTILATION | 1 |
| 12 | 600-D30.0 | SHAFT, DRIVE | 1 |
| 13 | 600-D30/S | SEAL, OUTPUT SHAFT, GEAR BOX, PRO-X | 1 |
| 14 | 600-D31EX | KEY, OUTPUT SHAFT TO EXTRUSION SCREW | 1 |
| 15 | 600-D31K | KEY, LARGE GEAR TO OUTPUT SHAFT | 1 |
| 16 | NS-HARDWARE | PIN, DOWEL, 1/8" OD X 1/2" LONG, 18-8 STAINLESS STEEL | 2 |
| 17 | NS-HARDWARE | PLUG, SEALING, 3/8" ID X 3/4" LONG, 50A DUROMETER, BLACK SBR RUBBER | 1 |
| 18 | NS-HARDWARE | SCREW, M4 X 0.7 X 20mm LONG, SOCKET HEAD CAP, 18-8 STAINLESS STEEL | 3 |
| 19 | NS-HARDWARE | SCREW, M3 X 0.5 X 20mm LONG, SOCKET HEAD CAP, 18-8 STAINLESS STEEL | 2 |

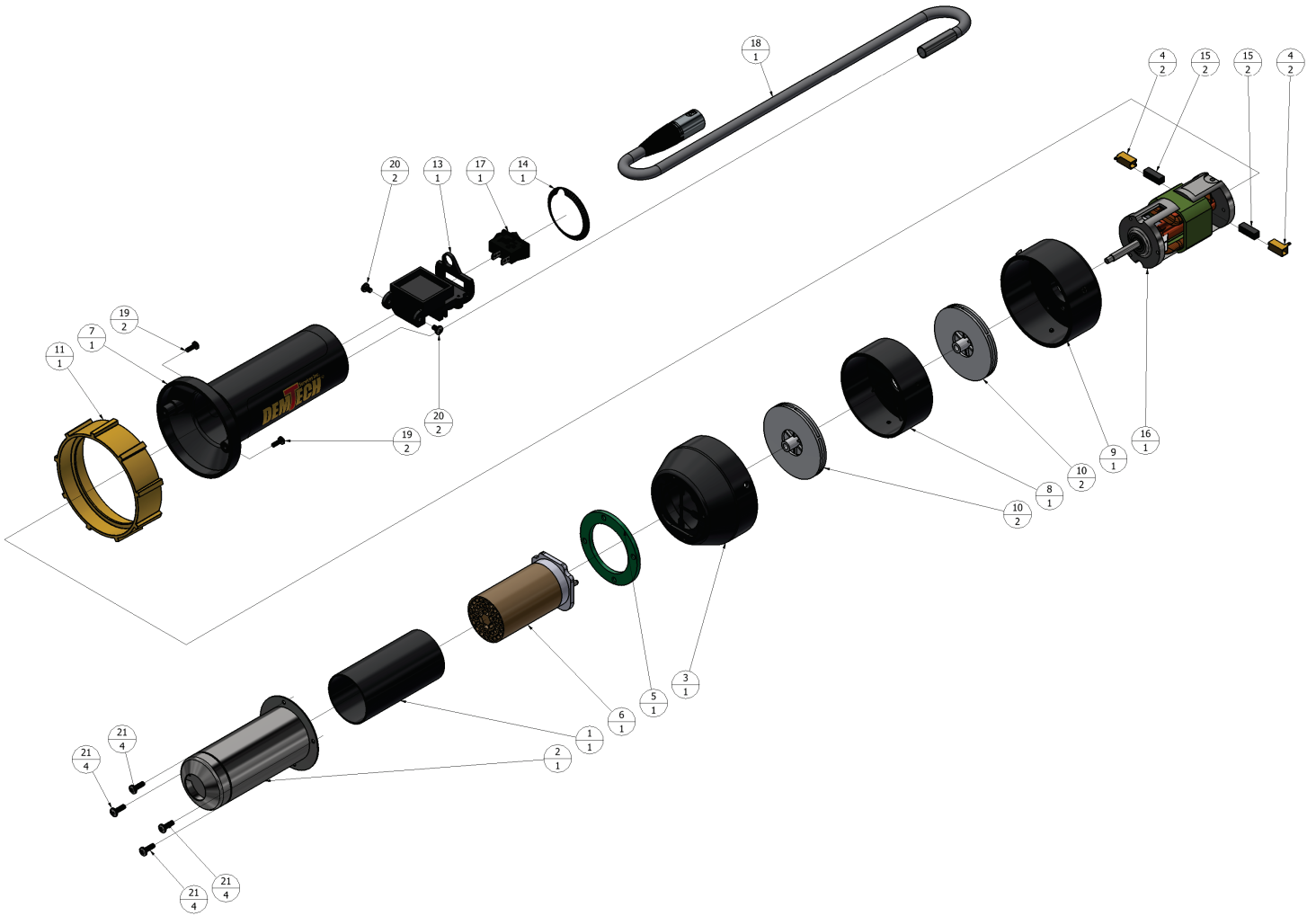
1.12 ASSY, GEAR BOX W/O ARMATURE, PRO-X (Parts List)



1.13 600-100A/A – ASSY, CONTROL BOX (Parts ID)

| Parts List | | | |
|------------|-------------|--|-----|
| REF. NO | PART NUMBER | DESCRIPTION | QTY |
| 1 | 100-426 | CONTROLLER, TEMPERATURE, EZ-ZONE | 2 |
| 2 | 100-431 | RELAY, SOLID STATE, 25A, 3-32VDC, 240V | 3 |
| 3 | 600-055.07 | SCREW, M3 X 0.5 X 6mm LONG, FLAT HEAD PHILLIPS, 18-8 STAINLESS STEEL | 8 |
| 4 | 600-06 | SWITCH, PRE-HEAT / PLASTIC HEAT | 1 |
| 5 | 600-09 | CURRENT INDICATOR, RED | 1 |
| 6 | 600-10 | CURRENT INDICATOR, GREEN | 1 |
| 7 | 600-11 | BRACKET, CURRENT INDICATOR | 2 |
| 8 | 600-14 | BOX, CONTROL | 1 |
| 9 | 600-14.01 | SCREW, M3 X 0.5 X 12mm LONG, SOCKET HEAD CAP, 18-8 STAINLESS STEEL | 2 |
| 10 | 600-14.03 | SCREW, M4 X 0.7 X 6mm LONG, SOCKET HEAD CAP, 18-8 STAINLESS STEEL | 6 |
| 11 | 600-14.3 | BRACKET, RELAY MOUNTING | 1 |
| 12 | 600-14/G | GROMMET, CONTROL BOX | 1 |
| 13 | 600-28 | TERMINAL STRIP | 1 |
| 14 | 600-29 | CIRCUIT BREAKER, 25A | 1 |
| 15 | 600-29EX | CIRCUIT BREAKER, 5A | 1 |
| 16 | 600-39EX | RECEPTACLE, HEAT BAND, T/C, 4 PRONG | 1 |
| 17 | 600-40EX | RECEPTACLE, PRE HEAT, T/C, 4 PRONG | 1 |
| 18 | 600-41EX | RECEPTACLE, HEATBAND, 5 PRONG | 1 |
| 19 | 600-42EX | RECEPTACLE, PREHEATER, 3 PRONG | 1 |
| 20 | 600-475/A | ASSEMBLY, POWER CORD, 120V | 1 |
| 21 | NS-HARDWARE | SCREW, M4 X 0.7 X 10mm LONG, SOCKET HEAD CAP, 18-8 STAINLESS STEEL | 4 |
| 22 | NS-HARDWARE | NUT, 6-32 HEX, NYLON-INSERT LOCKNUT, 18-8 STAINLESS STEEL | 4 |

1.14 600-100A/A – ASSY, CONTROL BOX (Parts List)



1.15 600-PREHEAT/2200/A – ASSY, PREHEATER, PRO-TACKER, 220V, 2200W (Parts ID)

| PARTS LIST | | | |
|------------|---------------|--|-----|
| REF. NO | PART NO | DESCRIPTION | QTY |
| 1 | A-6101760 | MICA TUBE, PRO-TACKER, ELECTRON, ERON | 1 |
| 2 | A-6101772 | HEAT SLEEVE, PRE-HEATER | 1 |
| 3 | A-6600638 | HOUSING, TURBINE, UPPER, 220V, 2 PRONG | 1 |
| 4 | L-100.279 | BRUSH HOLDER, 110V & 220V PRO-TACKER | 2 |
| 5 | L-101.270 | FIBER RING, ELECTRON | 1 |
| 6 | L-101.776 | HEAT ELEMENT, 230V, 2200W, 2 PIN W/ T/C HOLE | 1 |
| 7 | PRT-75020 | HOUSING, OVERMOLD | 1 |
| 8 | PRT-75024 | HOUSING, FAN, LOWER, PRO-TACKER | 1 |
| 9 | PRT-75026 | FAN HOUSING, MID, PRO-TACKER | 1 |
| 10 | PRT-75028 | FAN, UPPER & LOWER, PRO-TACKER | 2 |
| 11 | PRT-75032 | RUBBER STAND, PRO-TACKER | 1 |
| 12 | PRT-75036 | CORD RESTRAINT, PRO-TACKER | 1 |
| 13 | PRT-75044 | MOUNT, CONTROLLER, 110V, PRO-TACKER | 1 |
| 14 | PRT-75050 | AIR FILTER, 110V, PRO-TACKER | 1 |
| 15 | PRT-75052 | CARBON BRUSH, PRO-TACKER 110V & 220V | 2 |
| 16 | PRT-75087 | MOTOR, 220V, PRO-TACKER | 1 |
| 17 | 600-06 | SWITCH, PRE-HEAT / PLASTIC HEAT | 1 |
| 18 | 600-PH CORD/A | CORD, PREHEATER, W/ PLUG | 1 |
| 19 | NS-HARDWARE | SCREW, PAN HEAD PHILLIPS, M3.5 X 0.6mm X 10mm | 2 |
| 20 | NS-HARDWARE | SCREW, M4 X 0.7 X 6mm LONG, PAN HEAD PHILLIPS, 18-8 STAINLESS STEEL | 2 |
| 21 | NS-HARDWARE | SCREW, M4 X 0.7 X 12mm LONG, PAN HEAD PHILLIPS, 18-8 STAINLESS STEEL | 4 |
| 22 | NS-HARDWARE | SCREW, FLAT HEAD, M3.5 X 0.6mm X 8mm, 18-8 STAINLESS | 3 |
| 23 | NS-HARDWARE | SCREW, SHEET METAL, M2.9 X 9.5mm, 18-8 STAINLESS | 2 |

***1.16 600-PREHEAT/2200/A – ASSY, PREHEATER, PRO-TACKER,
220V, 2200W (Parts List)***