



Pro-Wedge



XL Parts ID Manual

Model Number: 500-0100XL

Revision: E

© Copyright 2023 by DEMTECH Services, Inc.

All Rights Reserved

Scope of Manual:

This manual contains diagrams and related parts lists to identify potential service/spare parts for your DEMTECH Services, Inc. Pro-Wedge XL Wedge Welder.

The text of this publication, or any part thereof, may not be reproduced or transmitted in any form or by any means, electronic or mechanical, including photocopying, recording, storage in an information retrieval system, or otherwise, without prior written permission of DEMTECH Services, Inc.

Notice

Patents have been granted and/or patent applications are pending or are in the process of preparation on all DEMTECH Services, Inc. developments.

The material in the manual is for informational purposes only and is subject to change without notice.

DEMTECH Services, Inc. assumes no responsibility for any errors that may appear in this manual.

Manual Number: **500-PARTS ID MANUAL/XL, Revision: E**

DEMTECH Services, Inc.

6414 Capitol Avenue Diamond Springs, CA 95619 U.S.A.

Telephone: (530) 621-3200

Toll Free: (888) 324-9353

Fax: (530) 621-0150

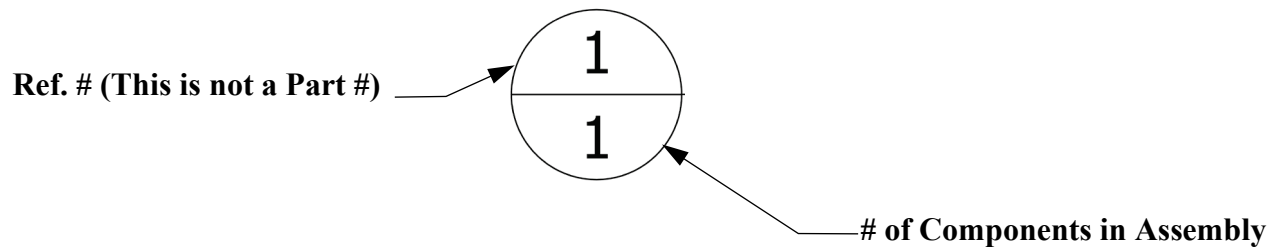
Web Site: www.demtech.com

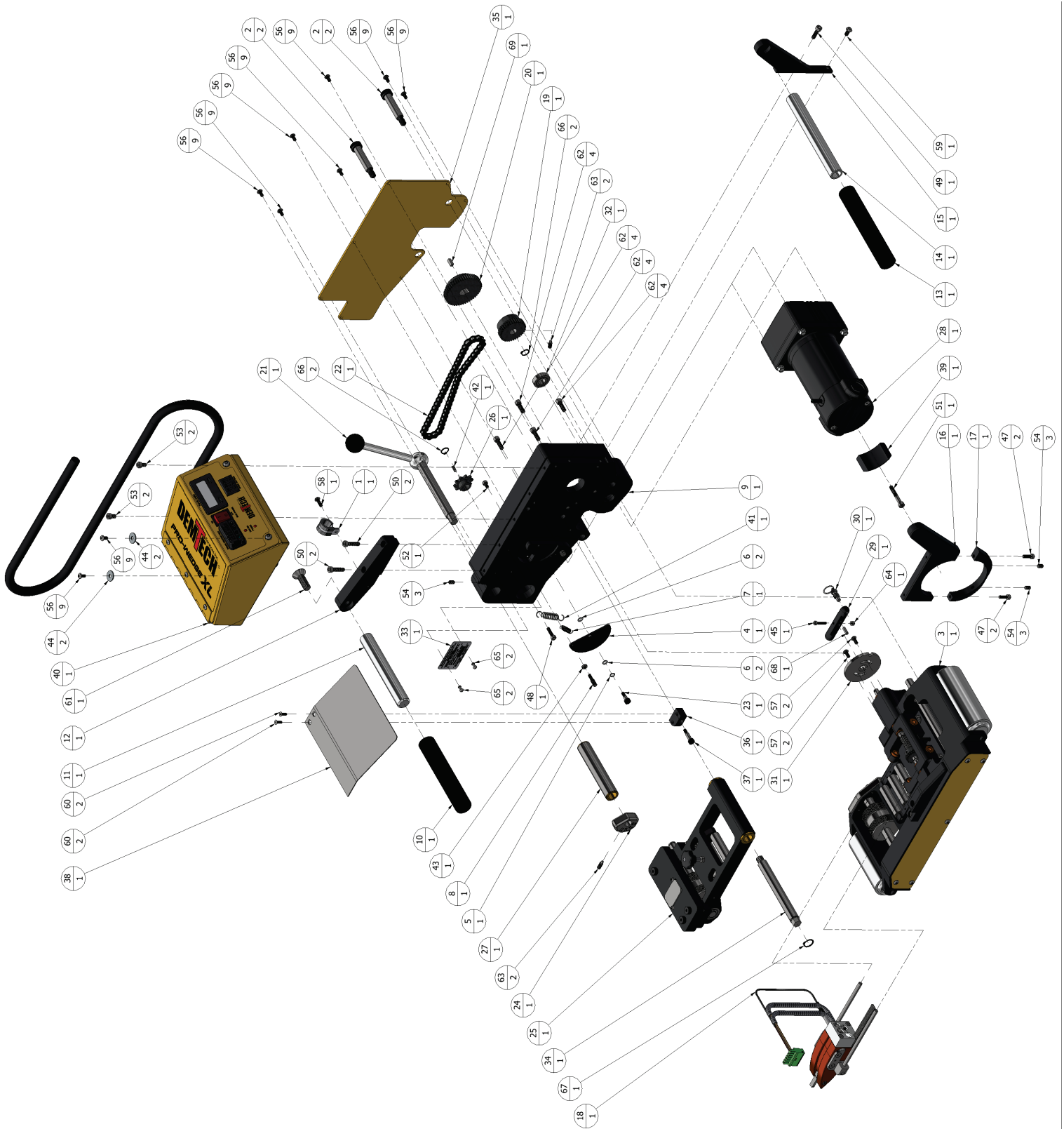
TABLE OF CONTENTS

1	ORDERING INSTRUCTIONS.....	PAGE 4
	1.1 500-0100XL – ASSY, PRO-WEDGE XL (Parts ID).....	Page 5
	1.2 500-0100XL – ASSY, PRO-WEDGE XL (Parts List).....	Page 6
	1.3 500-0100XL – ASSY, PRO-WEDGE XL CONTD. (Parts List).....	Page 7
	1.4 500-102XL/A – ASSY, SIDE FRAME, XL (Parts ID).....	Page 8
	1.5 500-102XL/A – ASSY, SIDE FRAME, XL (Parts List).....	Page 9
	1.6 500-1005XL/A – ASSY, PRO-WEDGE XL CONTROLLER (Parts ID).....	Page 10
	1.7 500-1005XL/A – ASSY, PRO-WEDGE XL CONTROLLER (Parts List).....	Page 11
	1.8 500-1006XL/A – ASSY, PRO-WEDGE XL CONTROL PANEL (Parts ID).....	Page 12
	1.9 500-1006XL/A – ASSY, PRO-WEDGE XL CONTROL PANEL (Parts List).....	Page 13
	1.10 500-101XL/A – ASSY, MAIN FRAME (Parts ID).....	Page 14
	1.11 500-101XL/A – ASSY, MAIN FRAME (Parts List).....	Page 15
	1.12 500-167/A – ASSY, NIP ARM, XL (Parts ID).....	Page 16
	1.13 12 500-167/A – ASSY, NIP ARM, XL (Parts List).....	Page 17
	1.14 500-125CMPLT/700/XL – ASSY, WEDGE, DUAL TRACK, W/ SHAFT & PLUG, XL (Parts ID).....	Page 18
	1.15 500-125CMPLT/700/XL – ASSY, WEDGE, DUAL TRACK, W/ SHAFT & PLUG, XL (Parts List).....	Page 19
	1.16 500-120.4/A – ASSY, CONTOUR ROLLER, TRIPLE, LOWER (Parts ID).....	Page 20
	1.17 500-120.5/A – ASSY, CONTOUR ROLLER, TRIPLE, UPPER (Parts ID).....	Page 20
	1.18 500-120.4/A – ASSY, CONTOUR ROLLER, TRIPLE, LOWER (Parts list).....	Page 21
	1.19 500-120.5/A – ASSY, CONTOUR ROLLER, TRIPLE, UPPER (Parts list).....	Page 21

1 Ordering Instructions

Refer to the diagrams and related parts lists on the following pages to identify potential replacement parts for the Pro-Wedge XL. To locate a part, find it visually on the exploded assembly diagram and note its Reference Number. Next refer to the assemblies parts list to identify the corresponding Part Number using the Reference Number. When ordering parts, be sure to specify the Part Number not the Reference Number. *NS-Hardware* refers to non-stock items, these parts are still available for order, please provide the part description to order NS-Hardware items.





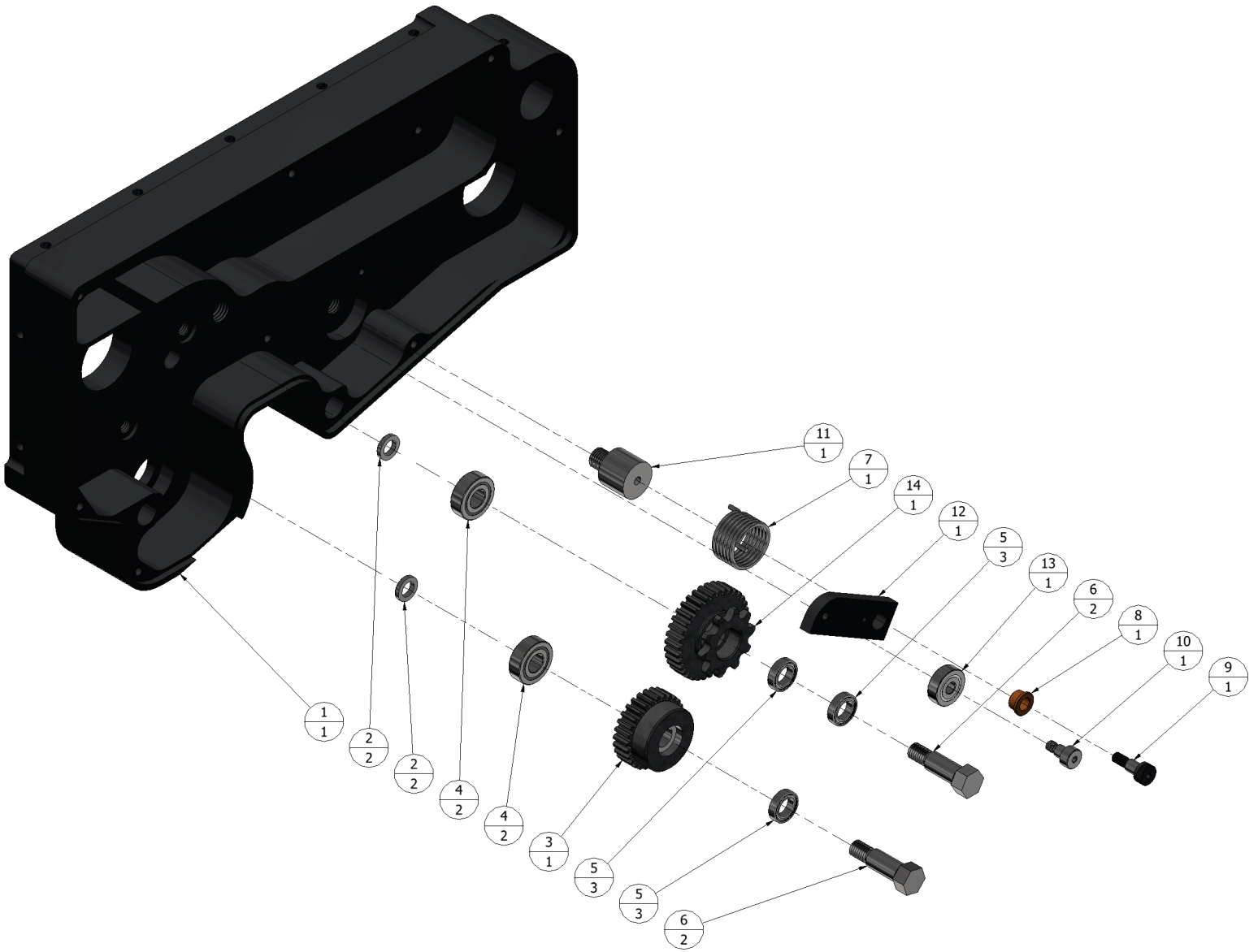
**1.1 500-0100XL – ASSY, PRO-WEDGE XL
(Parts ID)**

PARTS LIST			
REF. NO	PART NO	DESCRIPTION	QTY
1	100-235	MOUNT, CONDUIT	1
2	500-101AXL	SCREW, SHOULDER, FRAME LOCK	2
3	500-101XL/A	ASSEMBLY, MAIN FRAME	1
4	500-102AXL	DISC, HEATER CABLE RETENTION	1
5	500-102DXL	WASHER, SPRING, RETENTION DISC	1
6	500-102EXL	WASHER, NYLON, RETENTION DISK	2
7	500-102FXL	SPRING, RETURN, RETENTION DISC	1
8	500-102GXL	SCREW, THUMB, RETENTION DISC	1
9	500-102XL/A	ASSEMBLY, SIDE FRAME	1
10	500-103AXL	GRIP, REAR HANDLE	1
11	500-103XL	HANDLE, REAR	1
12	500-104XL	BRACKET, REAR HANDLE	1
13	500-105AXL	GRIP, FRONT HANDLE	1
14	500-105XL	HANDLE, FRONT	1
15	500-107XL	BRACKET, FRONT HANDLE	1
16	500-109XL	BRACKET, DRIVE MOTOR	1
17	500-113XL	CLAMP, MOTOR BRACKET	1
18	500-125CMLPT/700/XL	WEDGE ASSY, DUAL TRACK, COMPLETE, W/SHAFTS & PLUG, XL	1
19	500-139	GEAR, LOWER DRIVE SHAFT, 35 TOOTH, MODIFIED	1
20	500-145	GEAR, MOTOR DRIVE, 50 TOOTH, MODIFIED	1
21	500-150/A	ASSEMBLY, CAM SHAFT LEVER W/ KNOB	1
22	500-154.35	CHAIN, UPPER NIP, SIZE #35	1
23	500-158	SCREW, SHOULDER, IDLER ARM PIVOT/RETENTION DISC	1
24	500-166	CAM, ADJUSTMENT	1
25	500-167/A	ASSEMBLY, NIP ARM, XL	1
26	500-168.35	SPROCKET, NIP DRIVE, 10 TOOTH, MODIFIED	1
27	500-169/A	ASSEMBLY, CAM SHAFT, W/ BUSHINGS	1
28	500-170	MOTOR, DRIVE, MODEL 1068, MODIFIED	1
29	500-173XL	HANDLE, WEDGE ENGAGE	1
30	500-174	PLUNGER, HAND RETRACTABLE	1
31	500-176XL	PLATE, DROP-IN	1
32	500-197	BEARING SHAFT / 99R8 2RS	1
33	500-399XL	PLATE, SERIAL, PRO-WEDGE XL	1
34	500-1001A	SHAFT, NIP PIVOT, NEW	1
35	500-1012XL	COVER, SIDE FRAME	1

1.2 500-0100XL – ASSY, PRO-WEDGE XL (Parts List)

REF. NO	PART NO	DESCRIPTION	QTY
36	500-1014AXL	MOUNT, MATERIAL GUIDE	1
37	500-1014CXL	SHOULDER BOLT, MATERIAL GUIDE, M6 X 16	1
38	500-1014XL	GUIDE, MATERIAL	1
39	500-1015	DEFLECTOR, MATERIAL	1
40	500-1026YXL	ASSEMBLY, CONTROLLER COMPLETE, XL, YELLOW	1
41	500-1027	SPRING, NIP RETURN	1
42	NS-HARDWARE	KEY, WOODRUFF, 1/8" WIDE X 1/2" DIA, FLAT BOTTOM, ALLOY STEEL	1
43	NS-HARDWARE	NUT, HEX, NARROW, 10-32 X 11/32" WIDE X 1/8" HIGH, 18-8 STAINLESS STEEL	1
44	NS-HARDWARE	WASHER, FLAT, M6 OVERSIZED, 6.4mm ID X 18mm OD X 1.6mm THICK, ZINC-PLATED STEEL	2
45	NS-HARDWARE	SCREW, M4 X 0.7 X 20mm LONG, SOCKET HEAD CAP, 18-8 STAINLESS STEEL	1
46	NS-HARDWARE	SCREW, M5 X 0.8 X 12mm LONG, SOCKET HEAD CAP, 18-8 STAINLESS STEEL	2
47	NS-HARDWARE	SCREW, M5 X 0.8 X 16mm LONG, SOCKET HEAD CAP, 18-8 STAINLESS STEEL	2
48	NS-HARDWARE	SCREW, M5 X 0.8 X 20mm LONG, SOCKET HEAD CAP, 18-8 STAINLESS STEEL	1
49	NS-HARDWARE	SCREW, M6 X 1 X 20mm LONG, SOCKET HEAD CAP, 18-8 STAINLESS STEEL	1
50	NS-HARDWARE	SCREW, M6 X 1 X 25mm LONG, SOCKET HEAD CAP, 18-8 STAINLESS STEEL	2
51	NS-HARDWARE	SCREW, M6 X 1 X 40mm LONG, SOCKET HEAD CAP, 18-8 STAINLESS STEEL	1
52	NS-HARDWARE	SCREW, M5 X 0.8 X 8mm LONG, SOCKET HEAD CAP, 18-8 STAINLESS STEEL	1
53	NS-HARDWARE	SCREW, M6 X 1 X 10mm LONG, SOCKET HEAD CAP, 18-8 STAINLESS STEEL	2
54	NS-HARDWARE	SCREW, SET, M6 X 1 X 10mm LONG, CUP POINT ALLEN, 18-8 STAINLESS STEEL	3
55	NS-HARDWARE	SCREW, SET, M6 X 1 X 16mm LONG, ALLEN CUP POINT, 18-8 STAINLESS STEEL	1
56	NS-HARDWARE	SCREW, M5 X 0.8 X 10mm LONG, BUTTON HEAD SOCKET CAP, 18-8 STAINLESS STEEL	9
57	NS-HARDWARE	SCREW, M5 X 0.8 X 12mm LONG, BUTTON HEAD SOCKET CAP, 18-8 STAINLESS STEEL	2
58	NS-HARDWARE	SCREW, M5 X 0.8 X 16mm LONG, BUTTON HEAD SOCKET CAP, 18-8 STAINLESS STEEL	1
59	NS-HARDWARE	SCREW, M6 X 1 X 12mm LONG, BUTTON HEAD SOCKET CAP, 18-8 STAINLESS STEEL	1
60	NS-HARDWARE	SCREW, M4 X 0.7 X 12mm LONG, FLAT HEAD SOCKET CAP, 18-8 STAINLESS STEEL	2
61	NS-HARDWARE	SCREW, M12 X 1.75 X 35mm LONG, FLAT HEAD SOCKET CAP, 18-8 STAINLESS STEEL	1
62	NS-HARDWARE	SCREW, 10-32 X 5/8" LONG, SOCKET HEAD CAP, 18-8 STAINLESS STEEL	4
63	NS-HARDWARE	SCREW, SET, M6 X 1 X 16mm LONG, ALLEN EXTENDED TIP, 18-8 STAINLESS STEEL	2
64	NS-HARDWARE	NUT, M4 X 0.7 X 7mm WIDE X 5mm HIGH, HEX LOCK, NYLON-INSERT, 18-8 STAINLESS STEEL	1
65	NS-HARDWARE	RIVET, 1/8" BLIND, DOME STYLE, STAINLESS STEEL	2
66	NS-HARDWARE	RETAINING RING, EXTERNAL, 1/2" SHAFT, BLACK PHOSPHATE STEEL	2
67	NS-HARDWARE	RETAINING RING, EXTERNAL, 5/8" SHAFT, BLACK PHOSPHATE STEEL	1
68	NS-HARDWARE	PIN, DOWEL, 3/16" OD X 9/16" LONG, HARDENED 416 STAINLESS STEEL	1
69	NS-HARDWARE	KEY, 3/16" X 3/16" X 1/2" LONG, UNDERSIZED, HIGH CARBON PLAIN STEEL	1

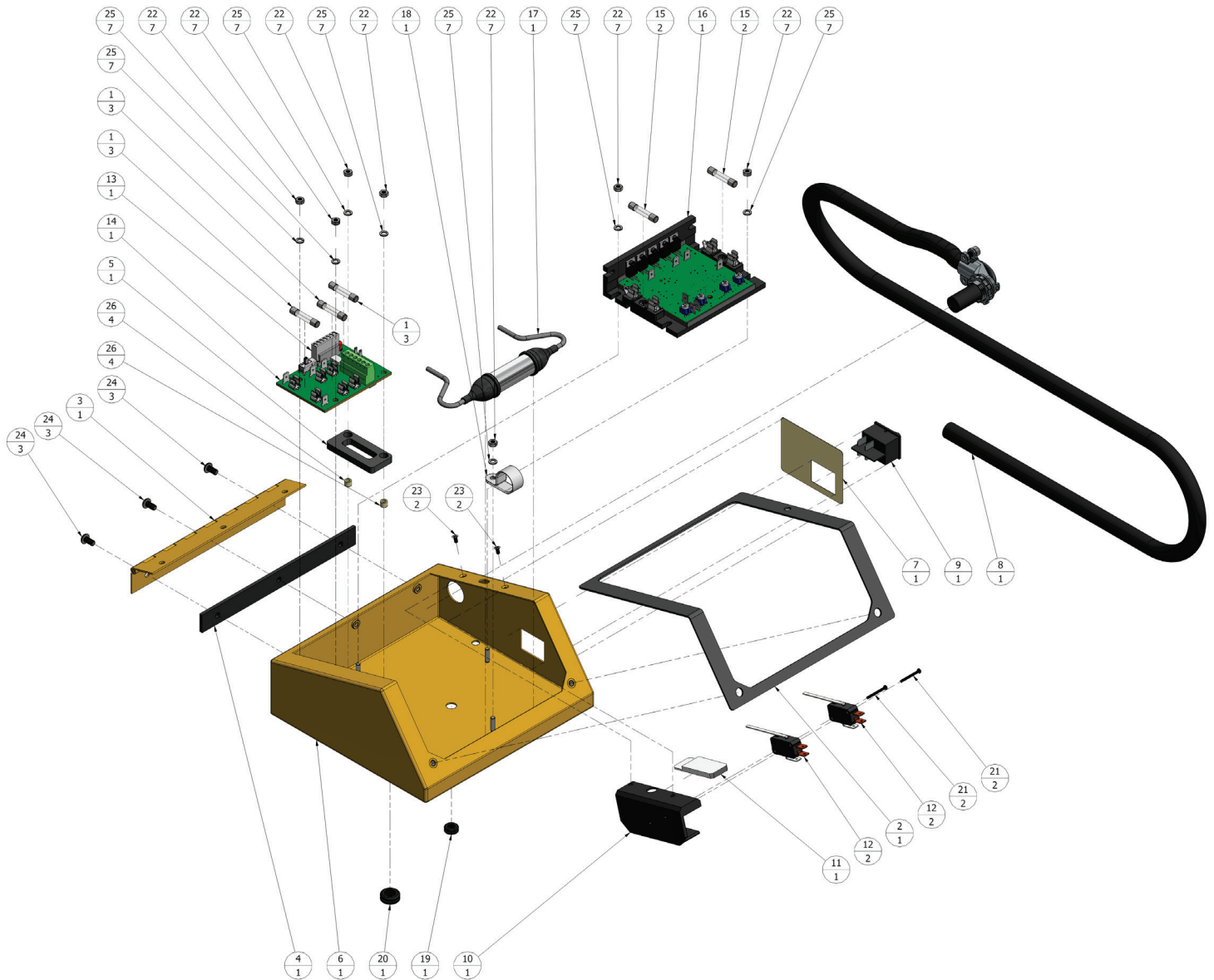
1.3 500-0100XL – ASSY, PRO-WEDGE XL CONTD. (Parts List)



1.4 500-102XL/A – ASSY, SIDE FRAME, XL (Parts ID)

PARTS LIST			
REF. NO	PART NO	DESCRIPTION	QTY
1	500-102XL	FRAME, SIDE	1
2	500-102HXL	WASHER, SIDE FRAME	2
3	500-140	GEAR, IDLER, 28 TOOTH, MODIFIED	1
4	500-141	BEARING, IDLER AND COMP GEAR	2
5	500-141A	BEARING, IDLER AND COMP GEAR, SMALL	3
6	500-142	SHOULDER BOLT, IDLER GEAR	2
7	500-156	SPRING, IDLER ARM	1
8	500-157	BUSHING, IDLER ARM PIVOT	1
9	500-158	SCREW, SHOULDER, IDLER ARM PIVOT/RETENTION DISC	1
10	500-158.35	SCREW, SHOULDER, 6mm DIA X 6mm LONG X M5 X 0.8 THREAD, 18-8 STAINLESS STEEL	1
11	500-159	MANDREL, IDLER ARM	1
12	500-160.1	ARM, IDLER, NEW	1
13	500-162	BEARING, UPPER NIP CHAIN TENSIONER	1
14	500-164.35	GEAR, COMPOSITE	1

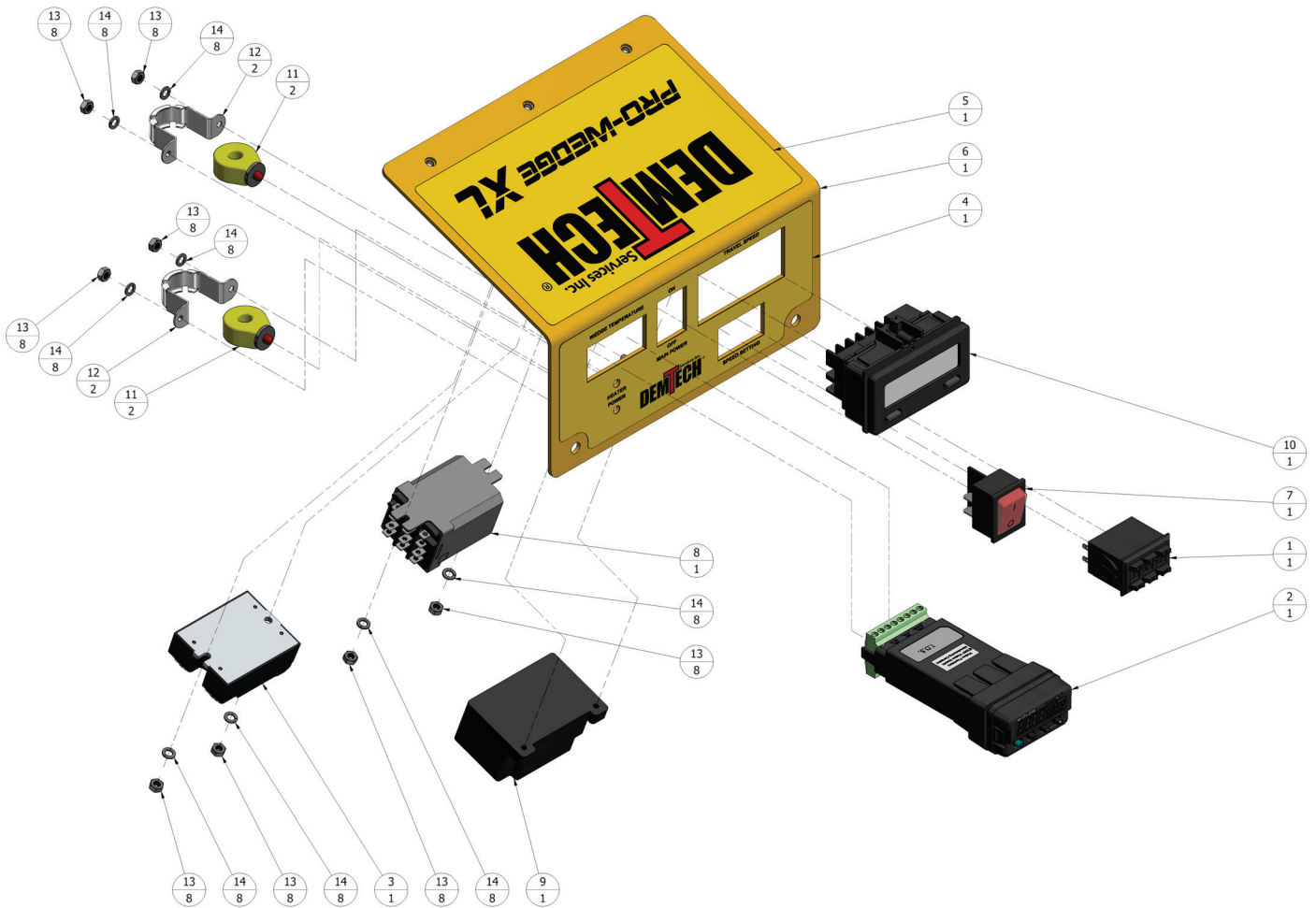
1.5 500-102XL/A – ASSY, SIDE FRAME, XL (Parts List)



1.6 500-1005XL/A - ASSY, PRO-WEDGE XL CONTROLLER
(Parts ID)

PARTS LIST			
REF. NO	PART NO	DESCRIPTION	QTY
1	100-456	FUSE, 20 AMP (110V MODEL)	3
2	500-1005AXL	GASKET, CONTROLLER HOUSING	1
3	500-1005BXL	HINGE, CONTROLLER HOUSING	1
4	500-1005CXL	SPACER, HINGE, CONTROLLER HOUSING	1
5	500-1005DXL	GASKET, HEATER INTERFACE CONNECTOR	1
6	500-1005XL	HOUSING, CONTROLLER	1
7	500-1006BXL	OVERLAY, MOTOR SWITCH	1
8	500-CORD/A	ASSEMBLY, POWER CORD, 5' LONG, W/ RESTRAINT	1
9	500-E17XL	SWITCH, MOTOR/POWER, ON/OFF	1
10	500-E19AXL	BRACKET, AC POWER INTERLOCK SWITCH	1
11	500-E19BXL	PAD, SWITCH LEVER, REACTION	1
12	500-E26EX	SWITCH, CONTROL PANEL, INTERLOCK	2
13	500-E2PLUG	PLUG, CIRCUIT BOARD, INTERCONNECT, XL	1
14	500-E2XL.1	ASSEMBLY, XL INTERCONNECT PCB, 24 AMP	1
15	500-E4	FUSE, 4 AMP, MOTOR CONTROLLER	2
16	500-E5.0/A	MOTOR CONTROL BOARD W/ FUSE KIT & H/P RESISTOR	1
17	500-E8	AMPLIFIER, PICK-UP	1
18	500-E8C	CLAMP, PRE-AMPLIFIER	1
19	500-E8G	GROMMET, PRE-AMPLIFIER WIRE HOLE	1
20	600-14/G	GROMMET, CONTROL BOX	1
21	NS-HARDWARE	SCREW, 2-56 X 7/8" LONG, PAN HEAD SLOTTED, 18-8 STAINLESS STEEL	2
22	NS-HARDWARE	NUT, HEX, M4 X 0.7 X 7mm WIDE X 3.2mm HIGH, 18-8 STAINLESS STEEL	7
23	NS-HARDWARE	SCREW, M3 X 0.5 X 6mm LONG, FLAT HEAD PHILLIPS, 18-8 STAINLESS STEEL	2
24	NS-HARDWARE	SCREW, M5 X 0.8 X 10mm LONG, BUTTON HEAD SOCKET CAP, 18-8 STAINLESS STEEL	3
25	NS-HARDWARE	WASHER, M4 REGULAR SPLIT LOCK, 18-8 STAINLESS STEEL	7
26	NS-HARDWARE	SPACER, .250" OD X .166" ID X .187" LONG, NYLON	4

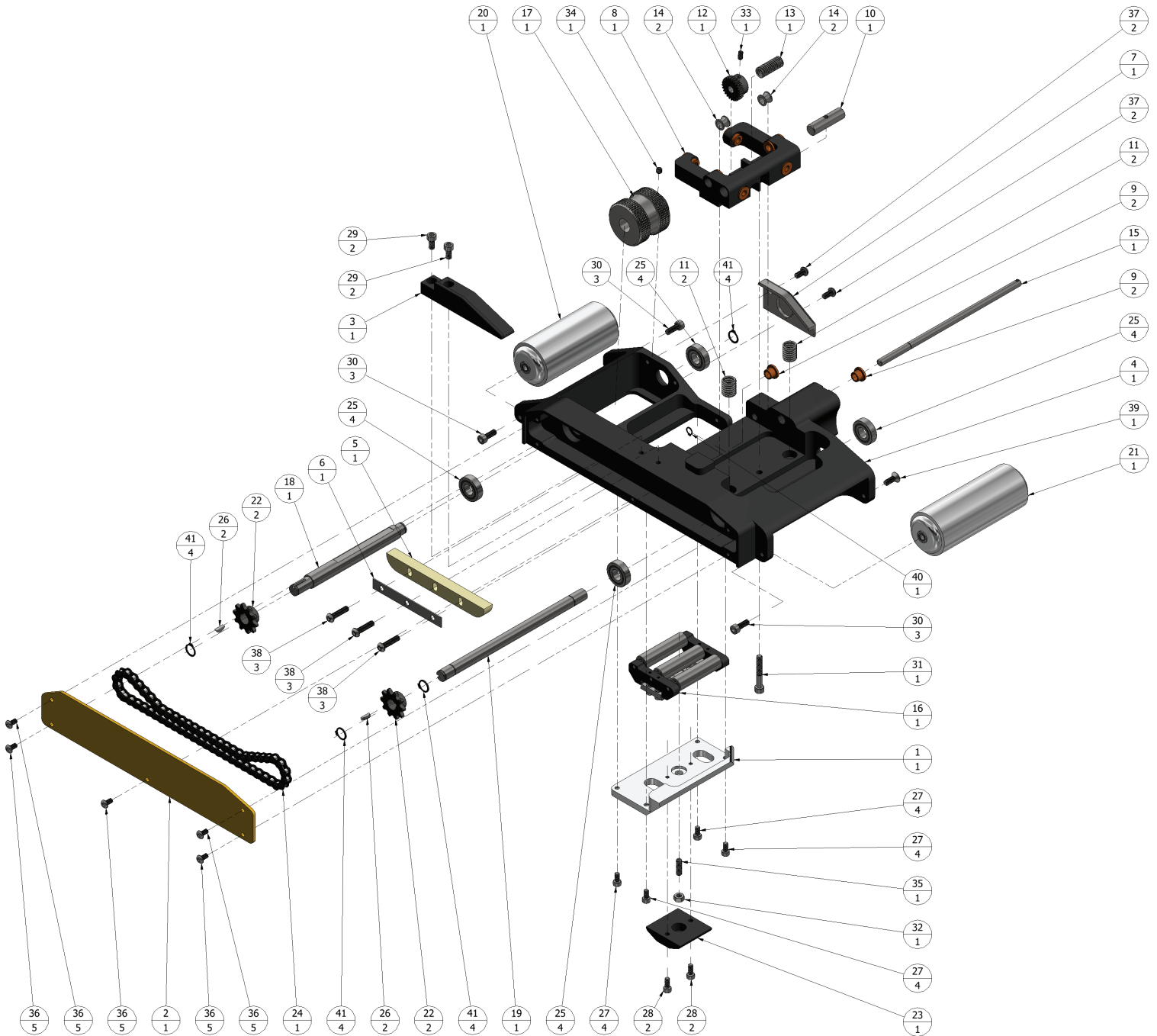
***1.7 500-1005XL/A – ASSY, PRO-WEDGE XL CONTROLLER
(Parts List)***



**1.8 500-1006XL/A – ASSY, PRO-WEDGE XL CONTROL PANEL
(Parts ID)**

PARTS LIST			
REF. NO	PART NO	DESCRIPTION	QTY
1	100-416	POTENTIOMETER, PUSH BUTTON, MOTOR	1
2	100-426	CONTROLLER, TEMPERATURE, EZ-ZONE	1
3	100-431	RELAY, SOLID STATE, 25A, 3-32VDC, 240V	1
4	500-1006AXL	OVERLAY, CONTROL PANEL	1
5	500-1006AXL TOP OVERLAY	OVERLAY, CONTROL PANEL	1
6	500-1006XL	PANEL, CONTROL	1
7	500-E17XL	SWITCH, MOTOR/POWER, ON/OFF	1
8	500-E19RXL	RELAY, VOLTAGE SWITCHING, XL	1
9	500-E7	POWER SUPPLY, SRO	1
10	500-E9	READOUT, SPEED	1
11	600-09	CURRENT INDICATOR, RED	2
12	600-11	BRACKET, CURRENT INDICATOR	2
13	NS-HARDWARE	NUT, HEX, M4 X 0.7 X 7mm WIDE X 3.2mm HIGH, 18-8 STAINLESS STEEL	8
14	NS-HARDWARE	WASHER, M4 REGULAR SPLIT LOCK, 18-8 STAINLESS STEEL	8

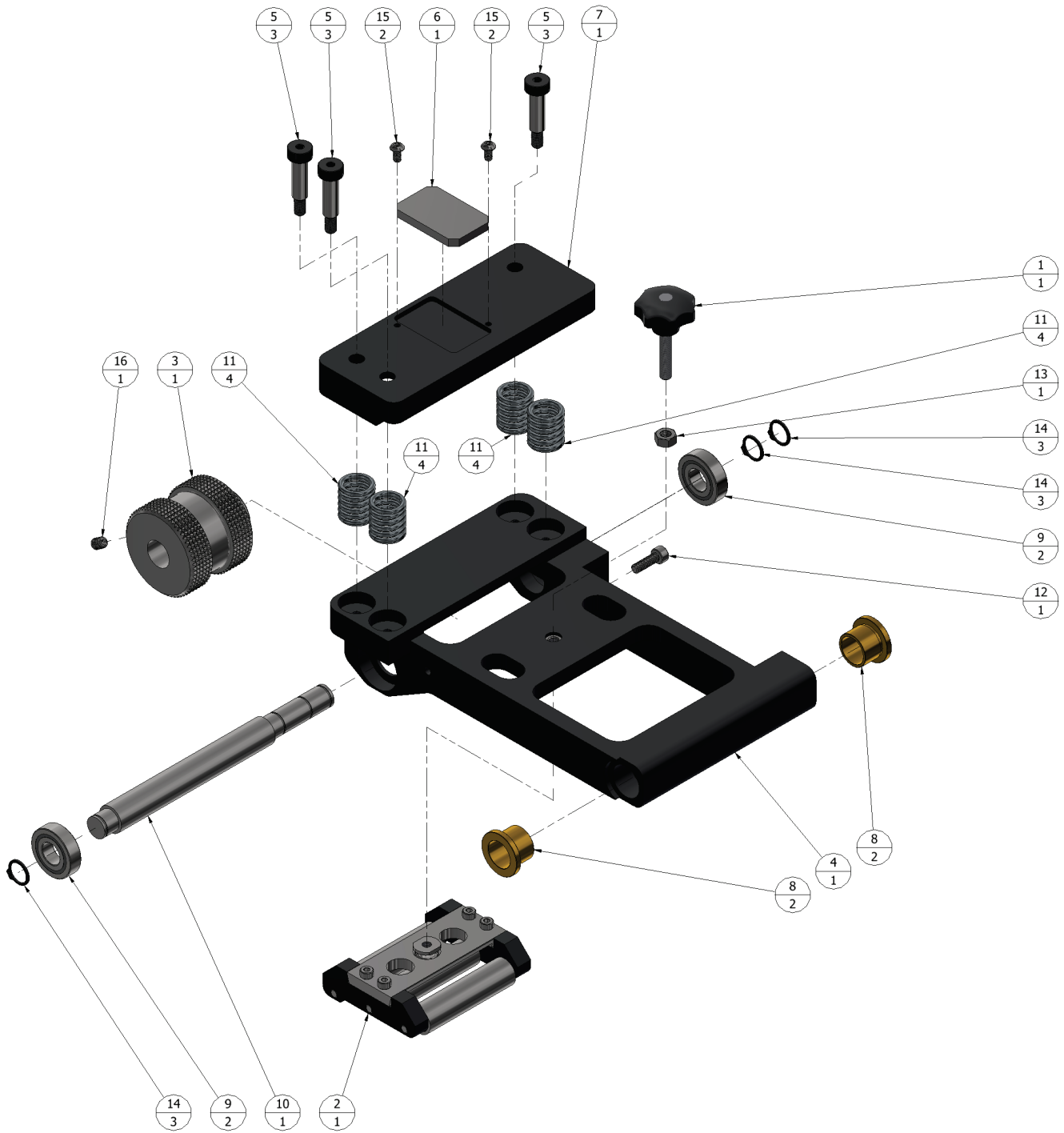
***1.9 500-1006XL/A – ASSY, PRO-WEDGE XL CONTROL PANEL
(Parts List)***



1.10 500-101XL/A – ASSY, MAIN FRAME (Parts ID)

PARTS LIST			
REF. NO	PART NO	DESCRIPTION	QTY
1	500-101.1XL	PLATE, DROP-OUT, LOWER CONTOUR ROLLER	1
2	500-1013XL	COVER , LOWER CHAIN	1
3	500-1014BXL	SUPPORT, MATERIAL GUIDE	1
4	500-101XL	FRAME, MAIN	1
5	500-1023	GUIDE, CHAIN, LOWER	1
6	500-1023A	WASHER, LOWER CHAIN GUIDE	1
7	500-106.1XL	SKID, MATERIAL	1
8	500-108XL/A	ASSEMBLY, WEDGE PIVOT CRADLE	1
9	500-110XL	BUSHING, FLANGED, PINION SHAFT, .312" ID X .437" OD X .375" LONG	2
10	500-114	BAR, CARRIAGE ADJUSTMENT	1
11	500-115	SPRING, WEDGE, PIVOT	2
12	500-116	GEAR, PINION, 24 TOOTH, MODIFIED	1
13	500-117BXL	SPRING, PINION SHAFT	1
14	500-117CXL	BUSHING, PINION GEAR SHAFT	2
15	500-117XL	SHAFT, PINION GEAR, XL	1
16	500-120.4/A	ASSEMBLY, CONTOUR ROLLER, TRIPLE, LOWER	1
17	500-130	NIP ROLLER, SPLIT, HDPE	1
18	500-132	SHAFT, LOWER NIP	1
19	500-133	SHAFT, LOWER NIP. DRIVE	1
20	500-134/A	ASSEMBLY, REAR TRAVEL ROLLER	1
21	500-138/A	ASSEMBLY, FRONT TRAVEL ROLLER	1
22	500-168.35	SPROCKET, NIP DRIVE, 10 TOOTH, MODIFIED	2
23	500-179XL	COVER, LOWER CONTOUR, ADJUSTMENT	1
24	500-181.35	CHAIN, LOWER NIP, SIZE #35	1
25	500-197	BEARING SHAFT / 99R8 2RS	4
26	NS-HARDWARE	KEY, WOODRUFF, 1/8" WIDE X 1/2" DIA, FLAT BOTTOM, ALLOY STEEL	2
27	NS-HARDWARE	SCREW, M5 X 0.8 X 10mm LONG, SOCKET HEAD CAP, 18-8 STAINLESS STEEL	4
28	NS-HARDWARE	SCREW, M5 X 0.8 X 12mm LONG, SOCKET HEAD CAP, 18-8 STAINLESS STEEL	2
29	NS-HARDWARE	SCREW, M6 X 1 X 12mm LONG, SOCKET HEAD CAP, 18-8 STAINLESS STEEL	2
30	NS-HARDWARE	SCREW, M6 X 1 X 16mm LONG, SOCKET HEAD CAP, 18-8 STAINLESS STEEL	3
31	NS-HARDWARE	SCREW, M6 X 1 X 40mm LONG, SOCKET HEAD CAP, THREAD-LOCKING, BLACK-OXIDE ALLOY STEEL	1
32	NS-HARDWARE	NUT, HEX, M6 X 1 X 10mm WIDE X 5mm THICK, 18-8 STAINLESS STEEL	1
33	NS-HARDWARE	SCREW, SET, M5 X 0.8 X 10mm LONG, CUP POINT ALLEN, 18-8 STAINLESS STEEL	1
34	NS-HARDWARE	SCREW, SET, M6 X 1 X 6mm LONG, CUP POINT ALLEN, 18-8 STAINLESS STEEL	1
35	NS-HARDWARE	SCREW, SET, M6 X 1 X 20mm LONG, CUP POINT ALLEN, 18-8 STAINLESS STEEL	1
36	NS-HARDWARE	SCREW, M5 X 0.8 X 10mm LONG, BUTTON HEAD SOCKET CAP, 18-8 STAINLESS STEEL	5
37	NS-HARDWARE	SCREW, M6 X 1 X 12mm LONG, BUTTON HEAD SOCKET CAP, 18-8 STAINLESS STEEL	2
38	NS-HARDWARE	SCREW, M6 X 1 X 25mm LONG, BUTTON HEAD SOCKET CAP, 18-8 STAINLESS STEEL	3
39	NS-HARDWARE	SCREW, M6 X 1 X 16mm LONG, FLAT HEAD SOCKET CAP, 18-8 STAINLESS STEEL	1
40	NS-HARDWARE	RING, RETAINING, EXTERNAL, 5/16" SHAFT, BLACK PHOSPHATE STEEL	1
41	NS-HARDWARE	RETAINING RING, EXTERNAL, 1/2" SHAFT, BLACK PHOSPHATE STEEL	4

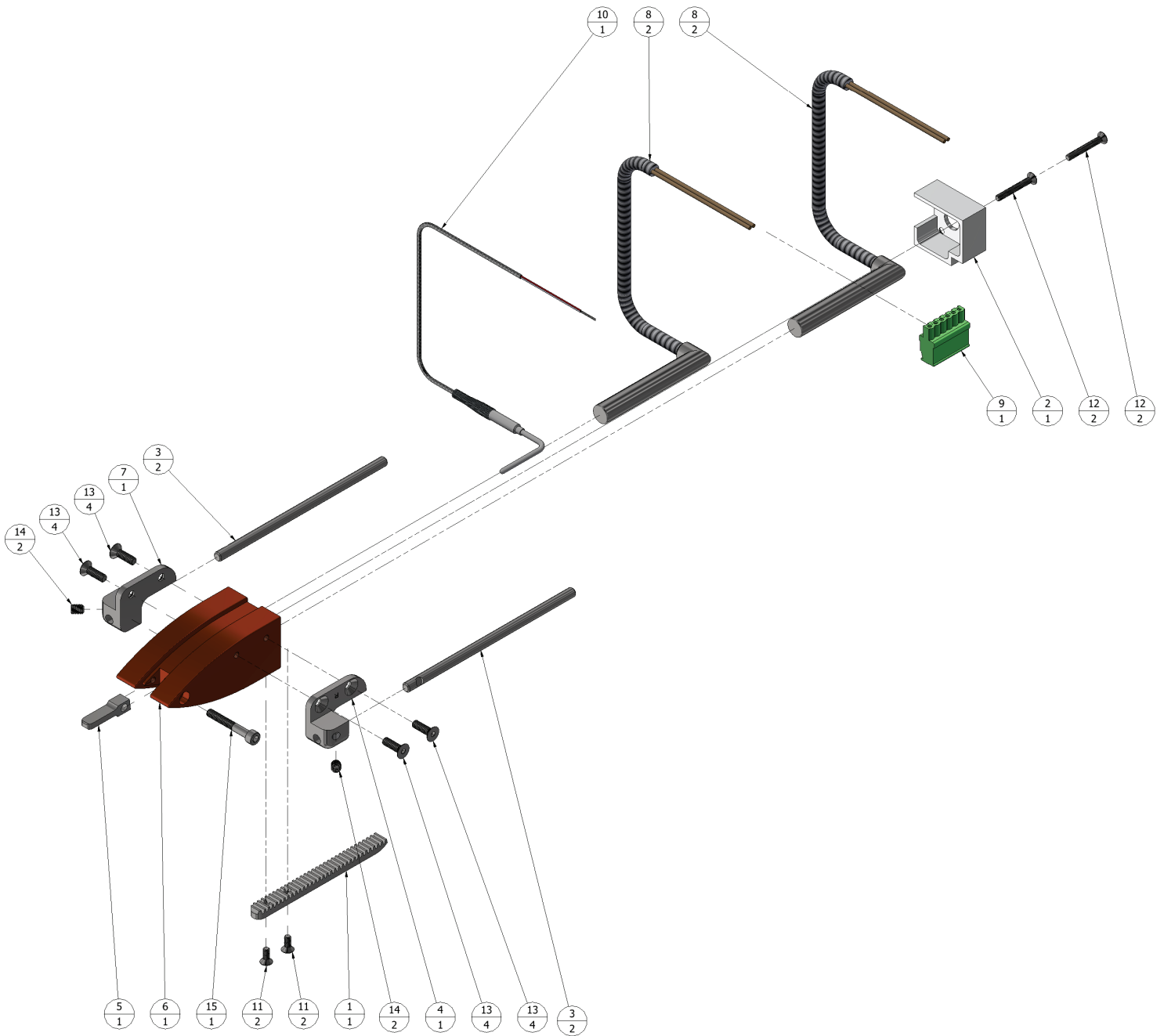
1.11 500-101/3XL/A - ASSY, MAIN FRAME (Parts List)



1.12 500-167/A – ASSY, NIP ARM, XL (Parts ID)

PARTS LIST			
REF. NO	PART NO	DESCRIPTION	QTY
1	500-120C	KNOB, UPPER CONTOUR ROLLER ADJUSTMENT	1
2	500-120.5/A	ASSEMBLY, CONTOUR ROLLER, TRIPLE, UPPER	1
3	500-130	NIP ROLLER, SPLIT, HDPE	1
4	500-167	ARM, NIP	1
5	500-171	SHOULDER BOLT, LOAD PLATE, M8 X 25	3
6	500-180AXL	PLATE, CAM WEAR	1
7	500-180XL	PLATE, LOAD	1
8	500-186	BUSHING, NIP PIVOT	2
9	500-197	BEARING SHAFT / 99R8 2RS	2
10	500-1002	SHAFT, UPPER NIP	1
11	500-1028	SPRING, LOAD PLATE	4
12	NS-HARDWARE	SCREW, M5 X 0.8 X 16mm LONG, SOCKET HEAD CAP, 18-8 STAINLESS STEEL	1
13	NS-HARDWARE	NUT, HEX, M6 X 1 X 10mm WIDE X 5mm THICK, 18-8 STAINLESS STEEL	1
14	NS-HARDWARE	RETAINING RING, EXTERNAL, 1/2" SHAFT, BLACK PHOSPHATE STEEL	3
15	NS-HARDWARE	SCREW, M4 X 0.7 X 8mm LONG, BOTTON HEAD CAP, 18-8 STAINLESS STEEL	2
16	NS-HARDWARE	SET SCREW, M6 X 1mm X 8, STAINLESS STEEL	1

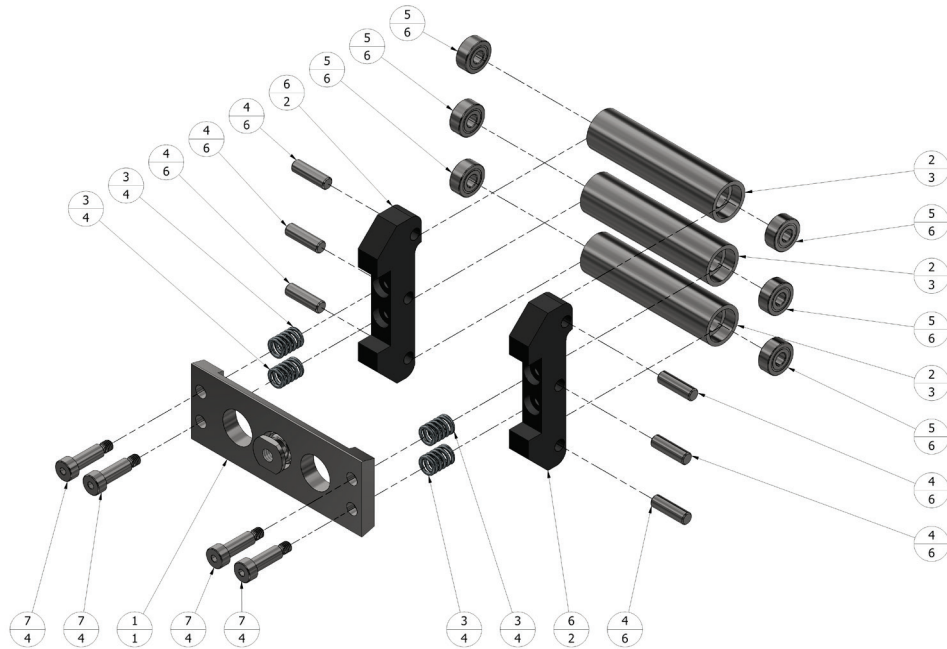
1.13 500-167/A – ASSY, NIP ARM, XL (Parts List)



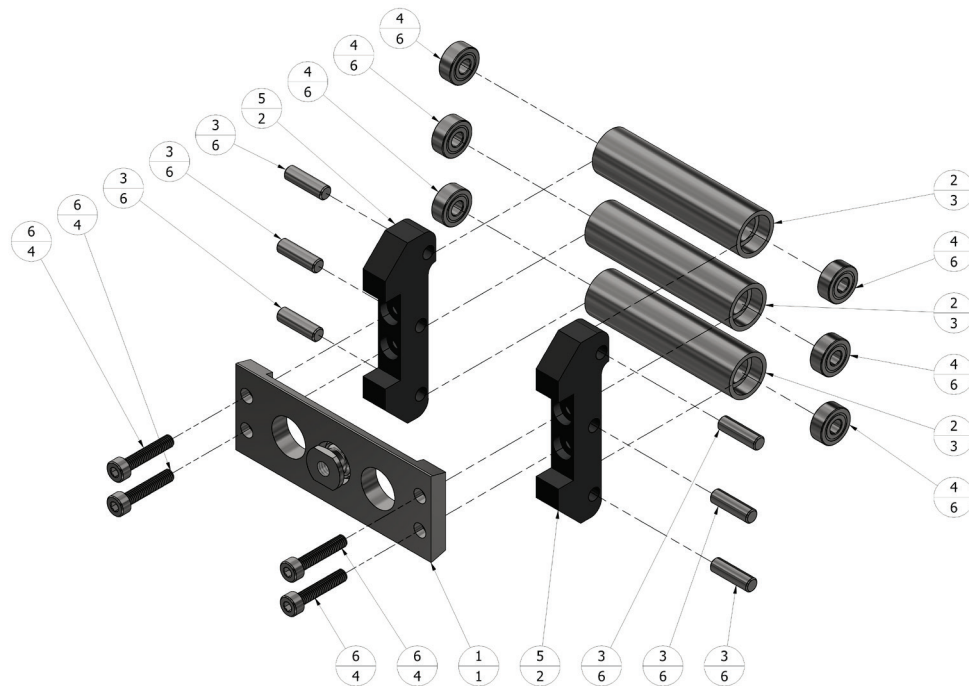
1.14 500-125CMPLT/700/XL – ASSY, WEDGE, DUAL TRACK, COMPLETE, W/ SHAFT & PLUG, XL (Parts ID)

PARTS LIST			
REF. NO	PART NO	DESCRIPTION	QTY
1	500-121	RACK, GEAR, 3/8	1
2	500-122.1	HOUSING, WEDGE TAIL /800	1
3	500-123	SHAFT, LINEAR	2
4	500-124.1	MOUNT, WEDGE, RIGHT-HAND	1
5	500-125.3	PIN, FLOATING, AIR CHANNEL	1
6	500-125B	WEDGE, DUAL TRACK, COPPER	1
7	500-126.1	MOUNT, WEDGE, LEFT-HAND	1
8	500-E10C	HEATER, CARTRIDGE, 120V, 700W	2
9	500-E10PLUG	PLUG, HEATER/T.C. CONNECTION	1
10	500-E11.1	ASSEMBLY, THERMOCOUPLE	1
11	NS-HARDWARE	SCREW, M4 X 0.7 X 10mm LONG, FLAT HEAD SOCKET CAP, 18-8 STAINLESS STEEL	2
12	NS-HARDWARE	SCREW, M4 X 0.7 X 30mm LONG, FLAT HEAD SOCKET CAP, 18-8 STAINLESS STEEL	2
13	NS-HARDWARE	SCREW, M5 X 0.8mm X 16mm LONG, FLAT HEAD SOCKET CAP, 18-8 STAINLESS STEEL	4
14	NS-HARDWARE	SET SCREW, M6 X 1mm X 8, STAINLESS STEEL	2
15	NS-HARDWARE	SCREW, M5 X 0.8 X 35mm LONG, SOCKET HEAD CAP, 18-8 STAINLESS STEEL	1

***1.15 500-125CMPLT/700/XL – ASSY, WEDGE, DUAL TRACK, W/
SHAFTS & PLUG, XL (Parts List)***



**1.16 500-120.4/A - ASSY, CONTOUR ROLLER, TRIPLE, LOWER
(Parts ID)**



**1.17 500-120.5/A – ASSY, CONTOUR ROLLER, TRIPLE, UPPER
(Parts ID)**

PARTS LIST			
REF. NO	PART NO	DESCRIPTION	QTY
1	500-120A/B	PLATE, CONTOUR ROLLER, W/ SWIVEL	1
2	500-120E.1	ROLLER, CONTOUR	3
3	500-120F	SPRING, CONTOUR ROLLER	4
4	500-120G	DOWEL PIN, CONTOUR ROLLER ASSY, 3/16" OD X 5/8" LONG, 18-8 STAINLESS STEEL	6
5	500-120H	BEARING, CONTOUR ROLLER, .500" OD X .187" ID .196" W, 2X SHIELD	6
6	500-120T	PLATE, ROLLER BLOCK, TRIPLE	2
7	500-194	SHOULDER BOLT, LOWER CONTOUR	4

***1.18 500-120.4/A – ASSY, CONTOUR ROLLER, TRIPLE, LOWER
(Parts List)***

PARTS LIST			
REF. NO	PART NO	DESCRIPTION	QTY
1	500-120A/B	PLATE, CONTOUR ROLLER, W/ SWIVEL	1
2	500-120E.1	ROLLER, CONTOUR	3
3	500-120G	DOWEL PIN, CONTOUR ROLLER ASSY, 3/16" OD X 5/8" LONG, 18-8 STAINLESS STEEL	6
4	500-120H	BEARING, CONTOUR ROLLER, .500" OD X .187" ID .196" W, 2X SHIELD	6
5	500-120T	PLATE, ROLLER BLOCK, TRIPLE	2
6	NS-HARDWARE	SCREW, M4 X 0.7 X 20mm LONG, SOCKET HEAD CAP, 18-8 STAINLESS STEEL	4

***1.19 500-120.5/A – ASSY, CONTOUR ROLLER, TRIPLE, UPPER
(Parts List)***